

BIOSKILLS ONE

THE TRICUSPID AND MITRAL VALVE COMPARATIVE ANATOMY

MARK REISMAN, MD

REISMANM@UW.EDU

Disclosure Statement of Financial Interest

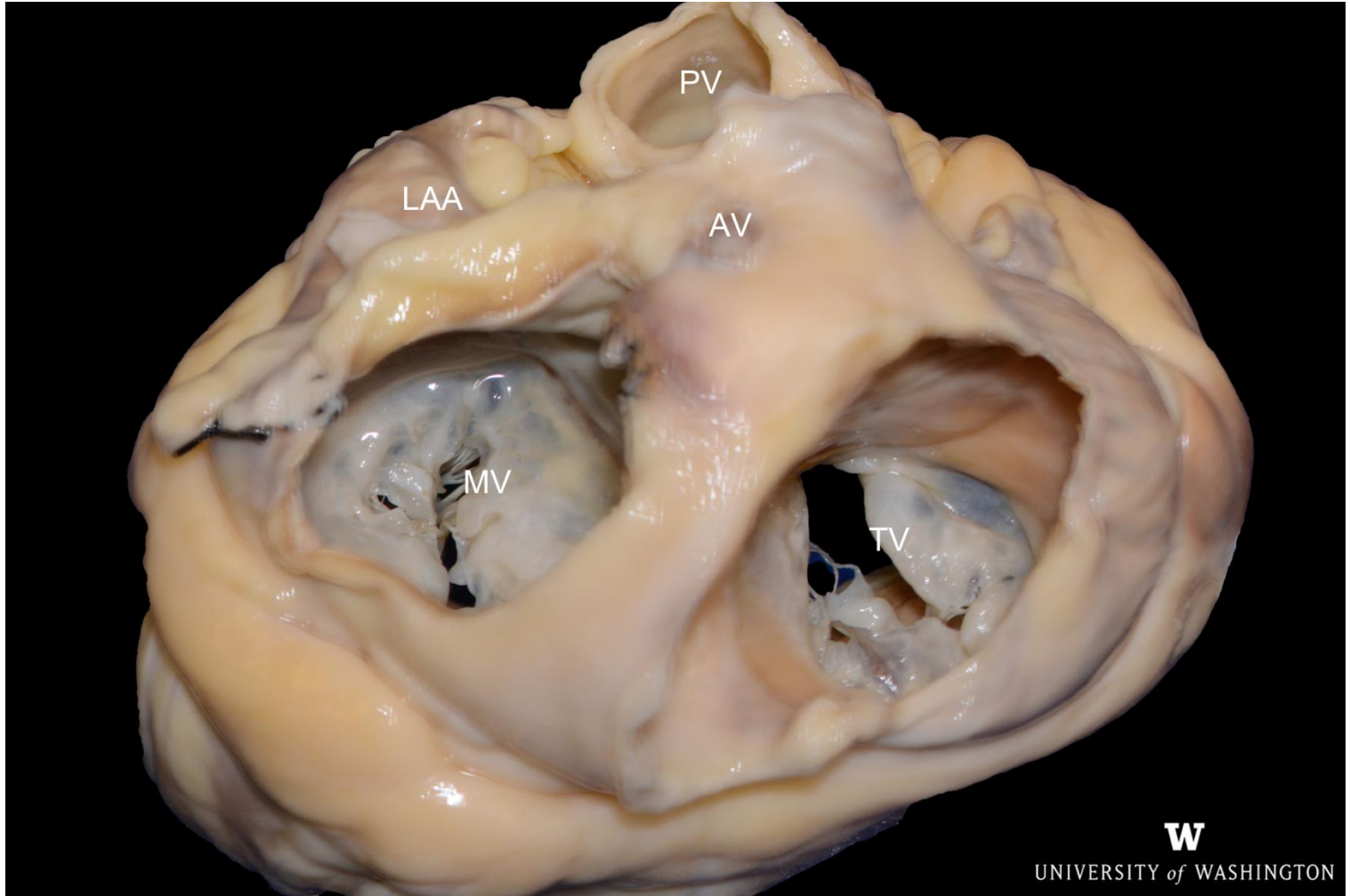
I, **Mark Reisman, MD**, DO NOT have a financial interest/arrangement or affiliation with one or more organizations that could be perceived as a real or apparent conflict of interest in the context of the subject of this presentation.

All TVT 2017 faculty disclosures are listed online and on the app.

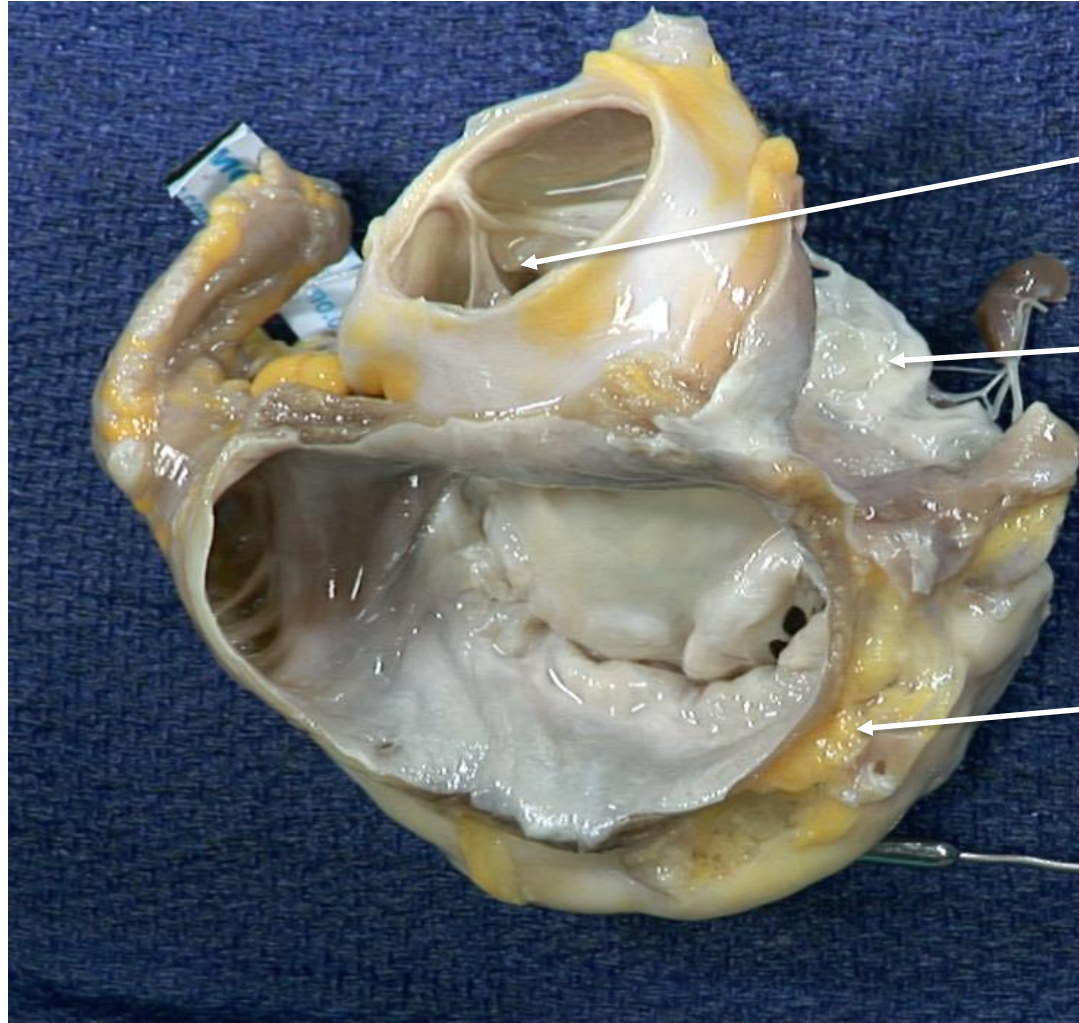
AIMS

- Anatomical Differences between the tricuspid and mitral valve
- Relational anatomy
- Pathology of mitral valve

THE TRICUSPID AND MITRAL VALVE



RELATIONSHIP OF TV TO MV

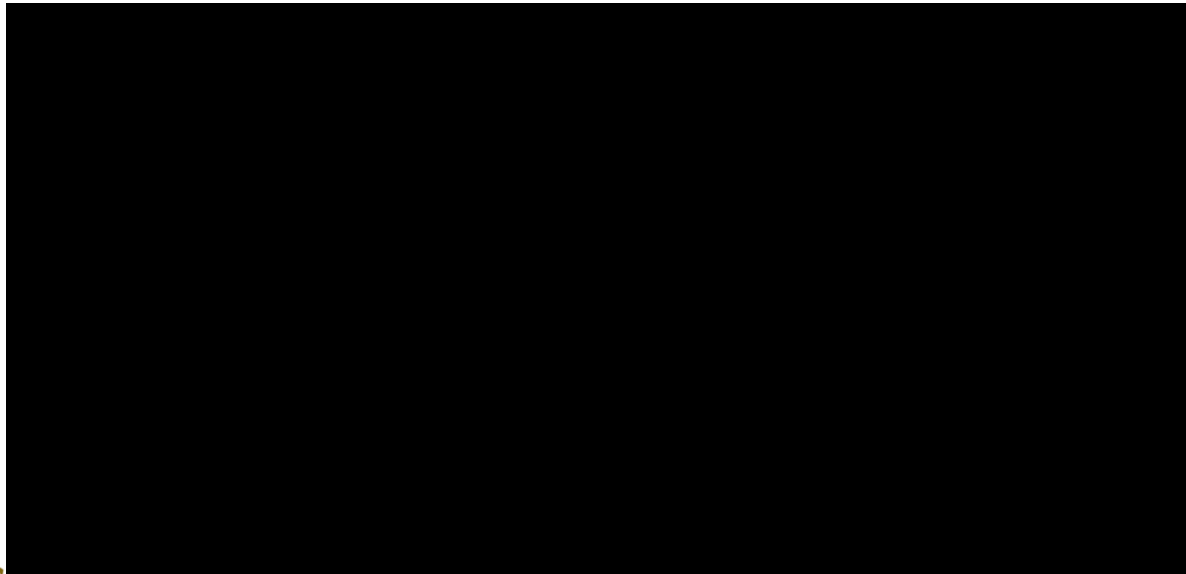
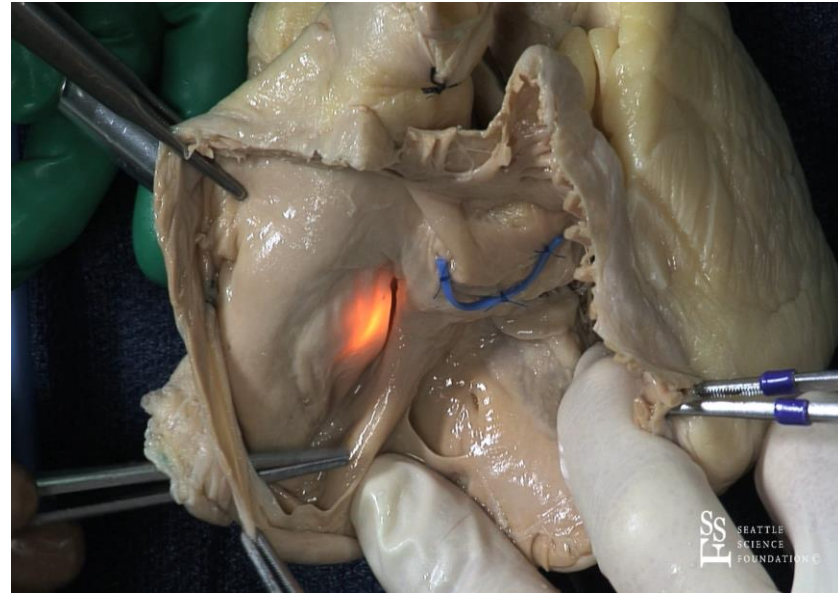
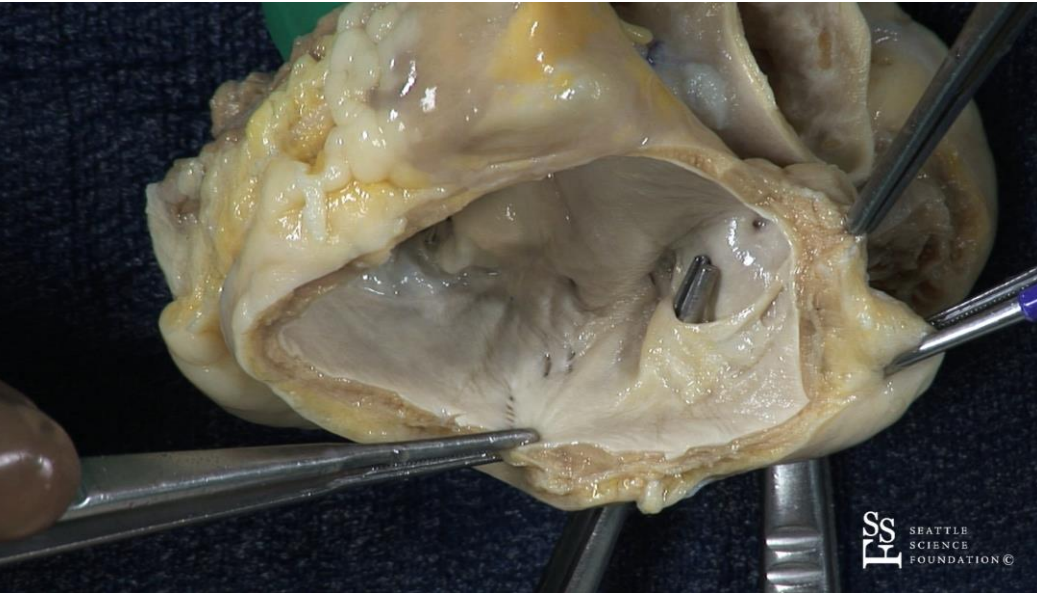


Non coronary
Cusp of Aortic Valve

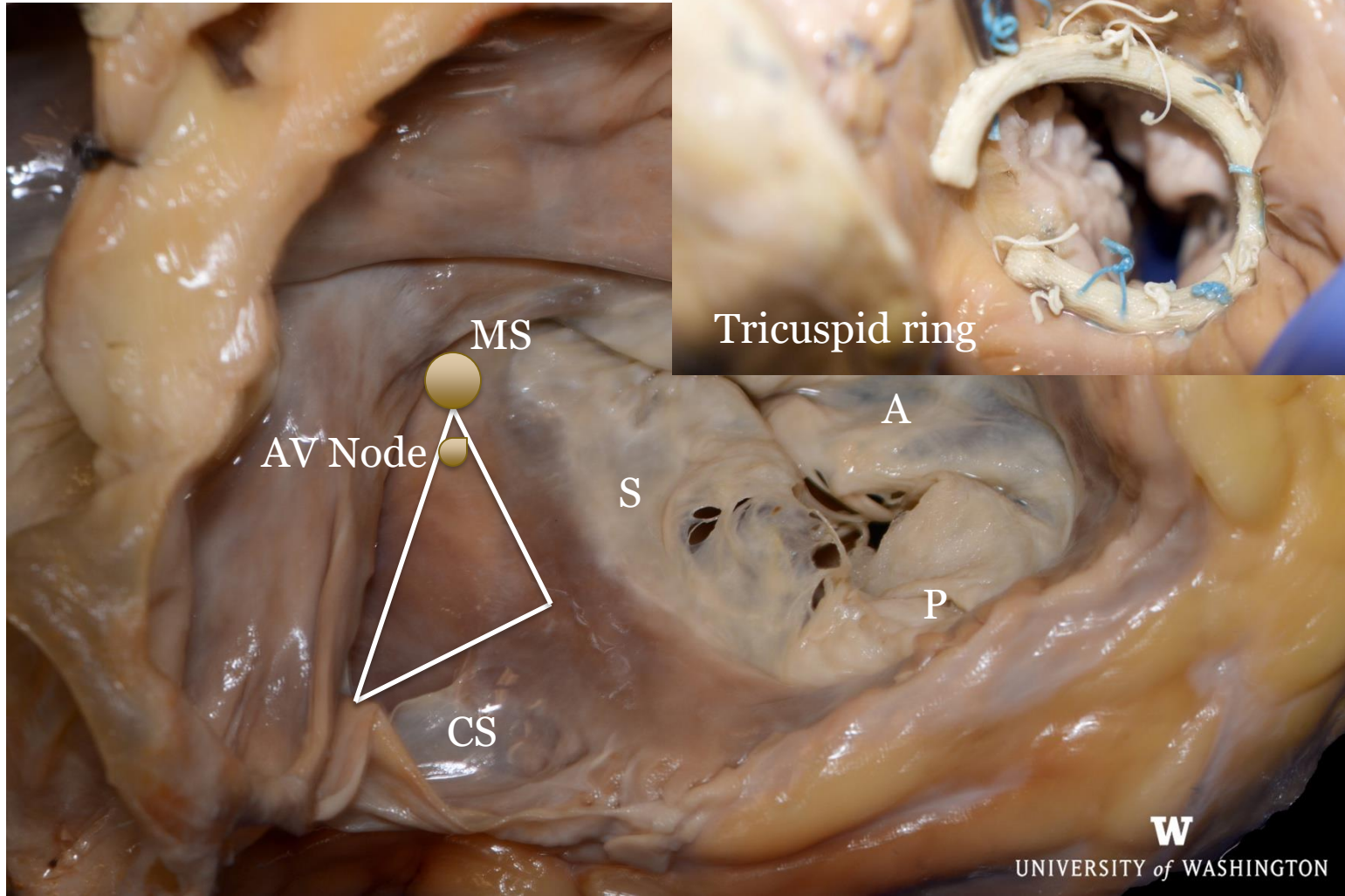
Septal leaflet
Of tricuspid valve

Coronary sinus

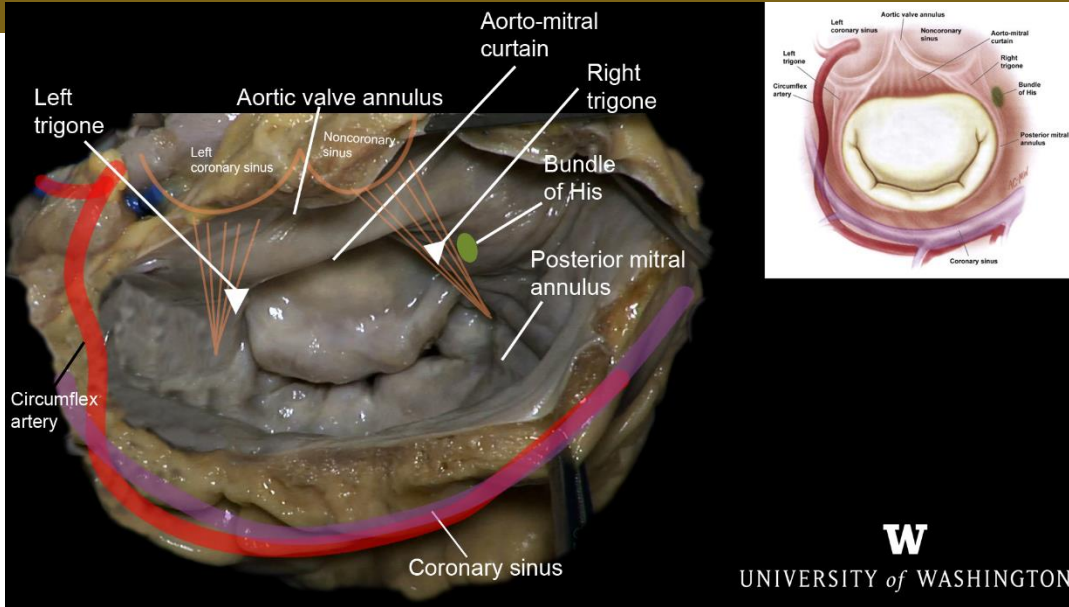
LEFT ATRIUM VS RIGHT ATRIUM



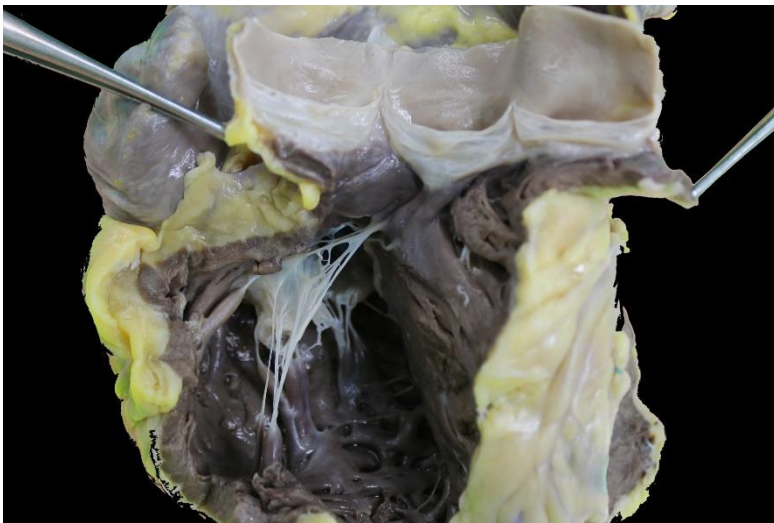
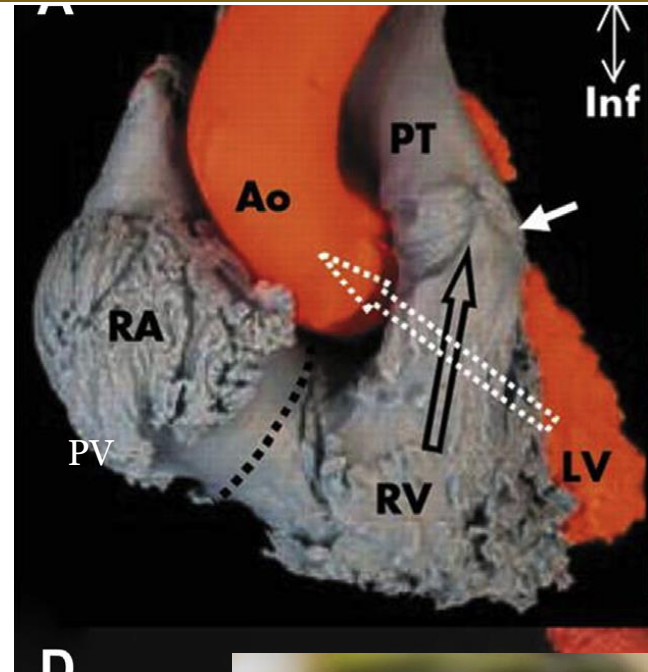
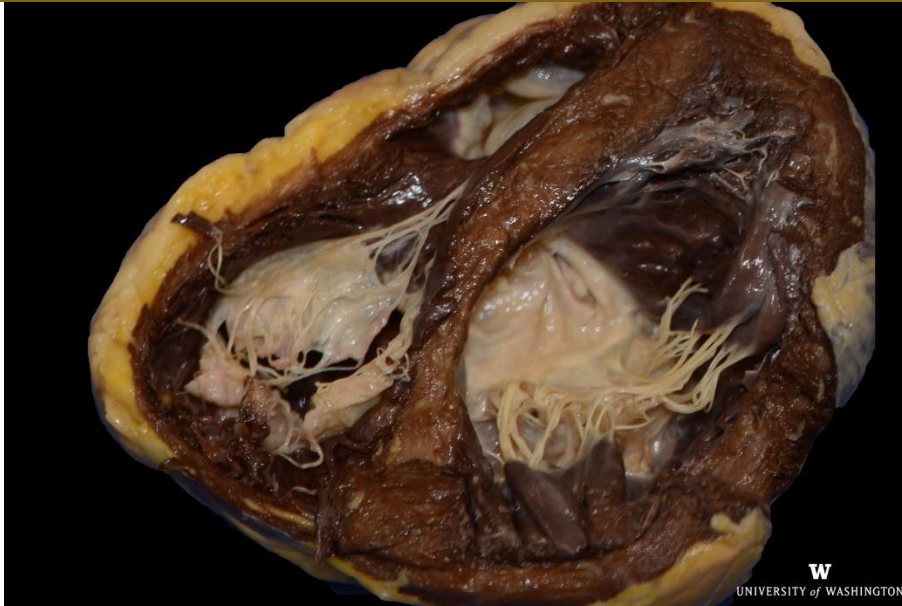
THE RIGHT ATRIUM



THE LEFT ATRIUM

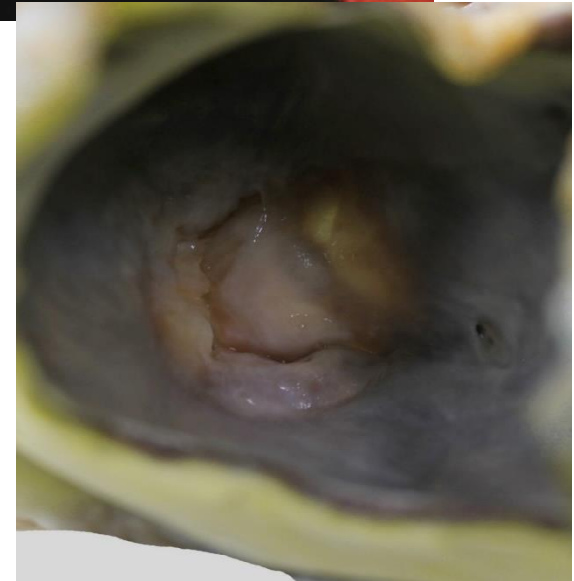


Ventricular relationship

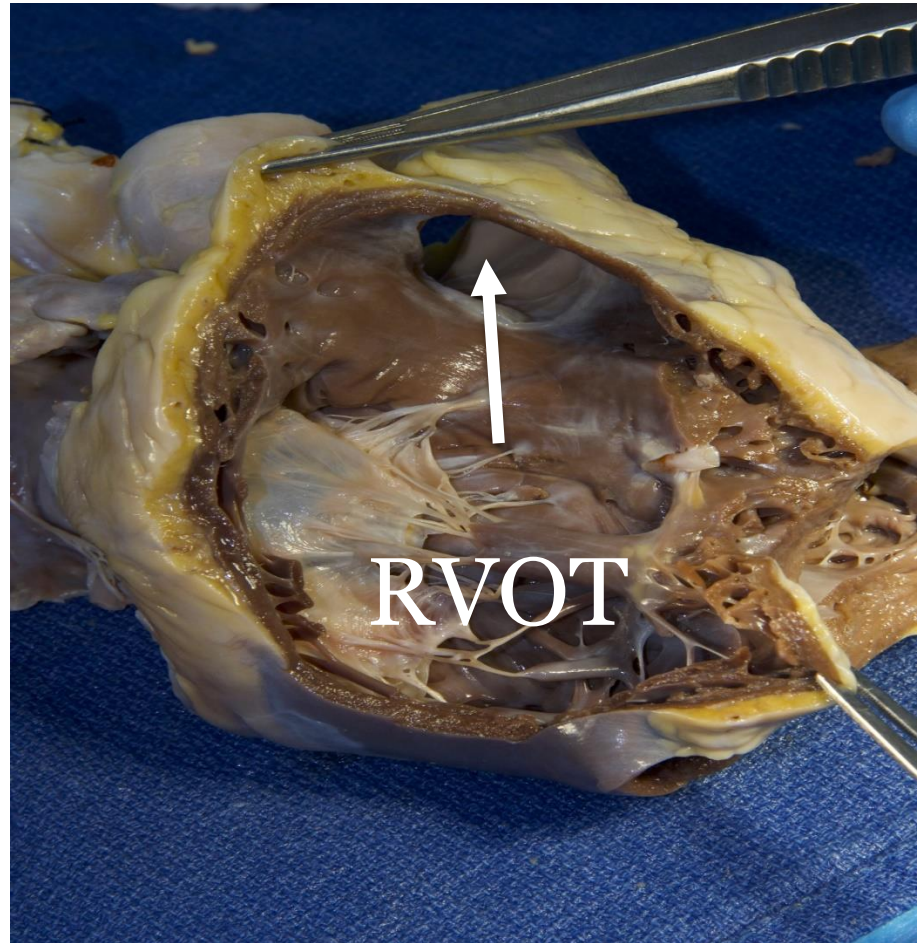
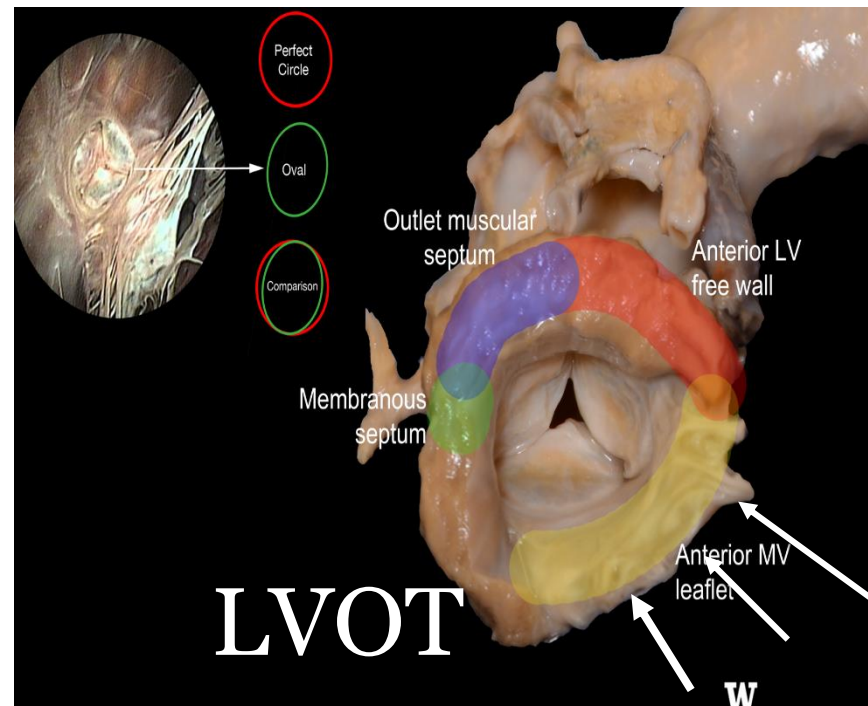


Pulmonary valve

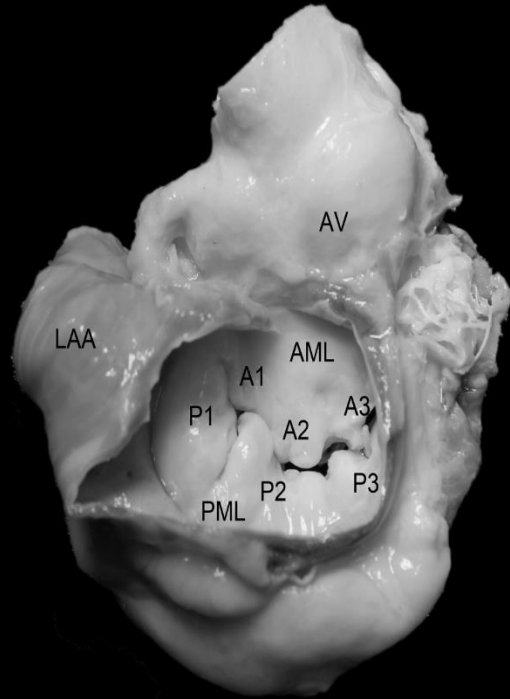
The mitral valve with the Aortic valve backlit



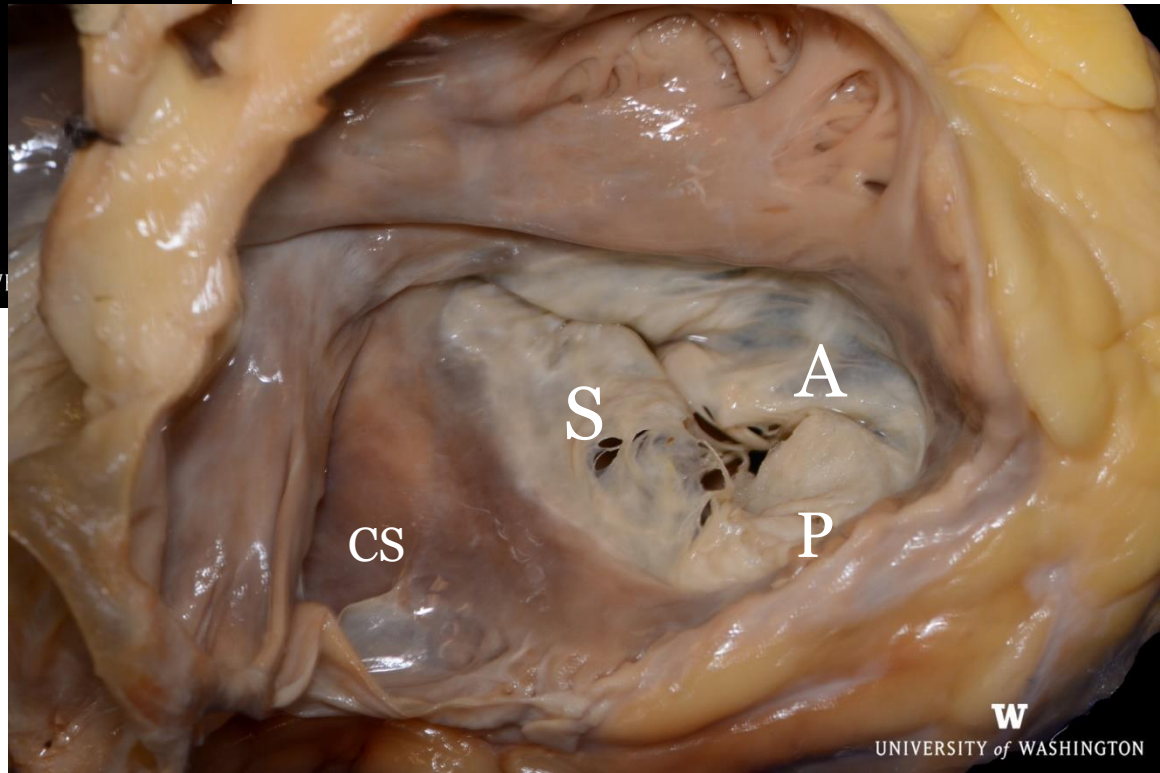
RELATIONAL ANATOMY OF THE MITRAL VALVE



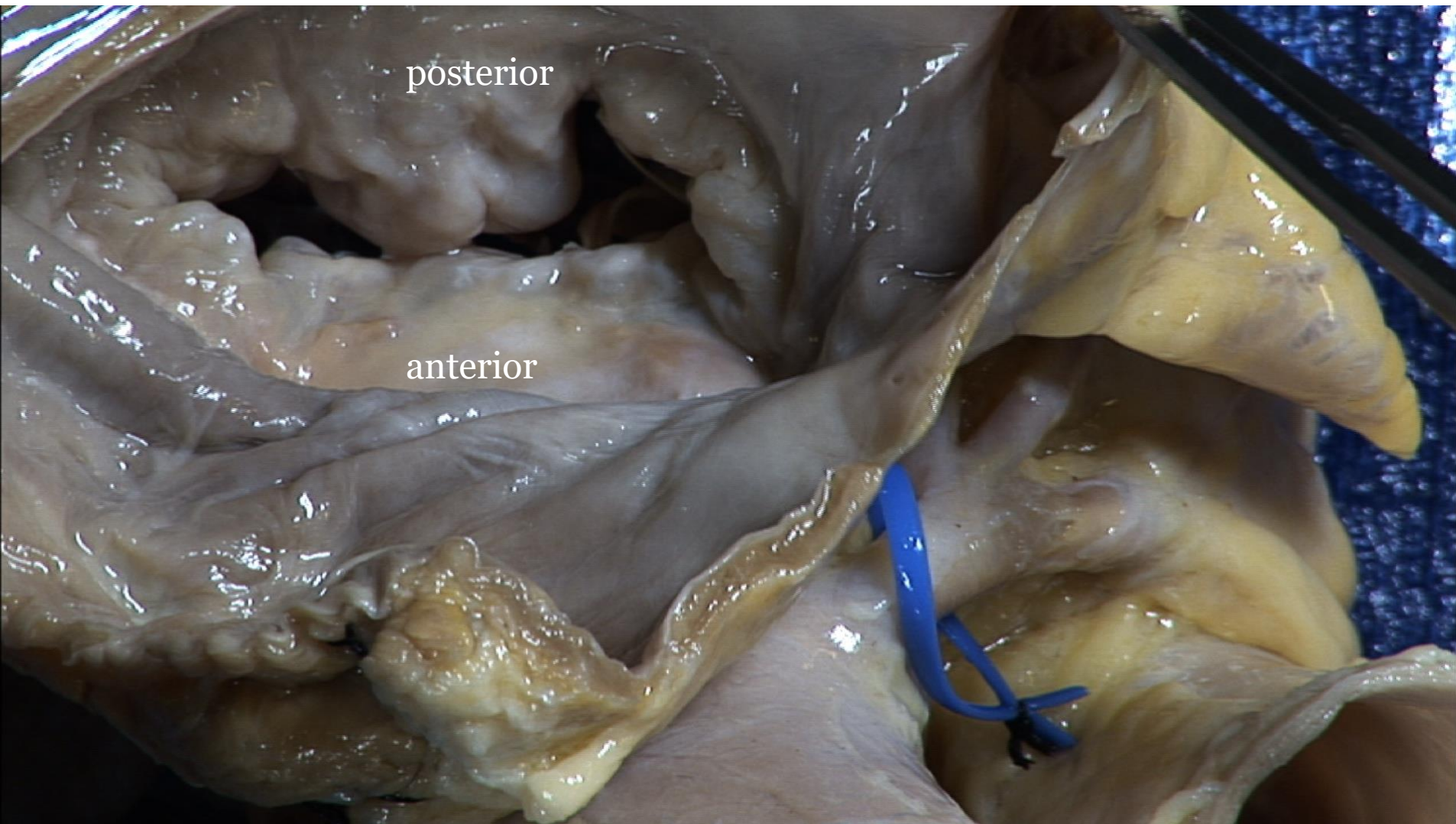
MITRAL AND TRICUSPID LEAFLETS



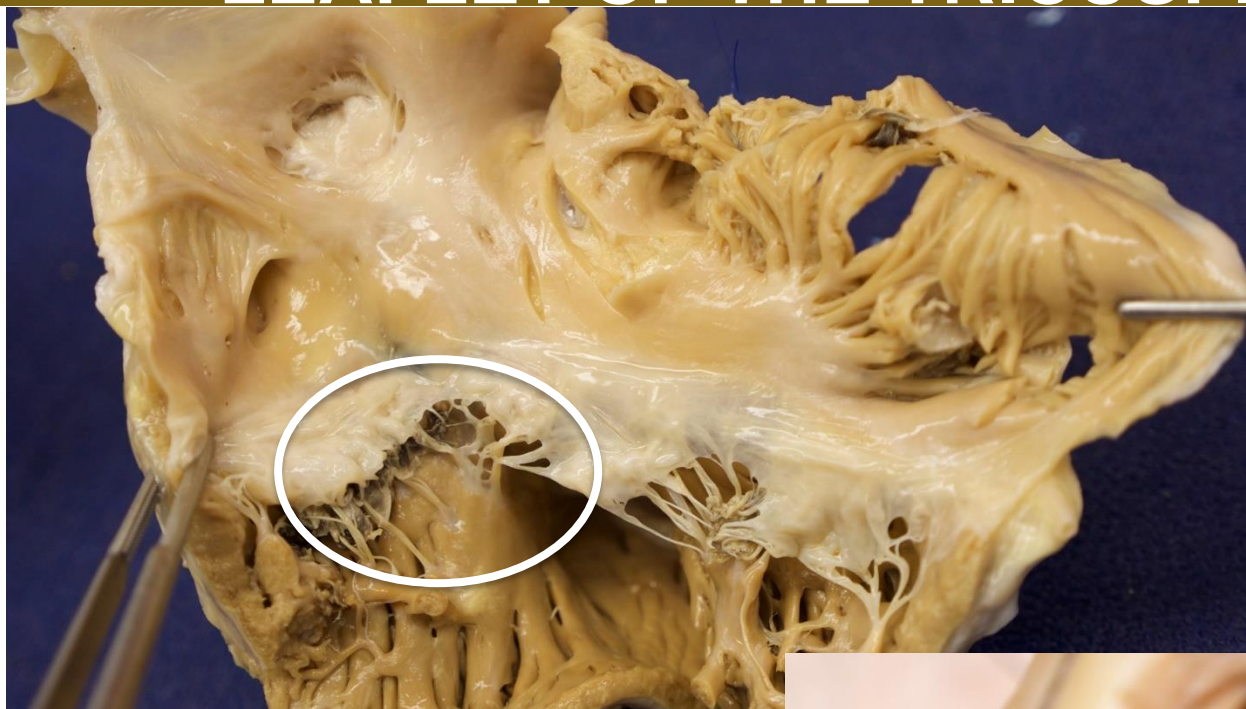
UNIV



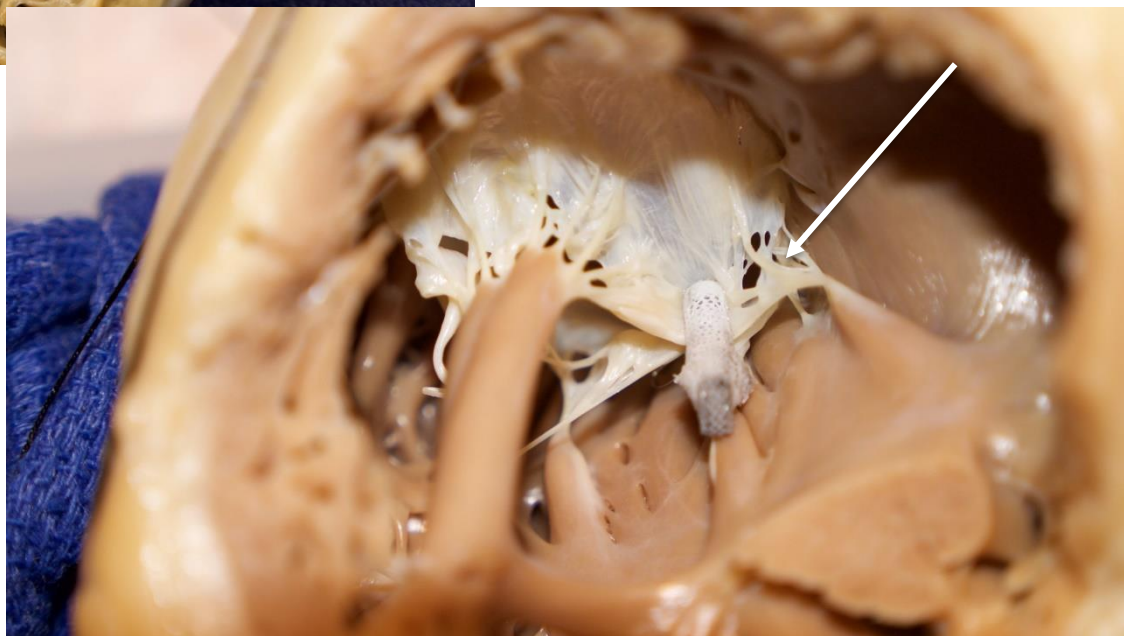
THE MTRAL LEAFLETS



SEPARATION OF ANTERIOR AND SEPTAL LEAFLET OF THE TRICUSPID LEAFLET



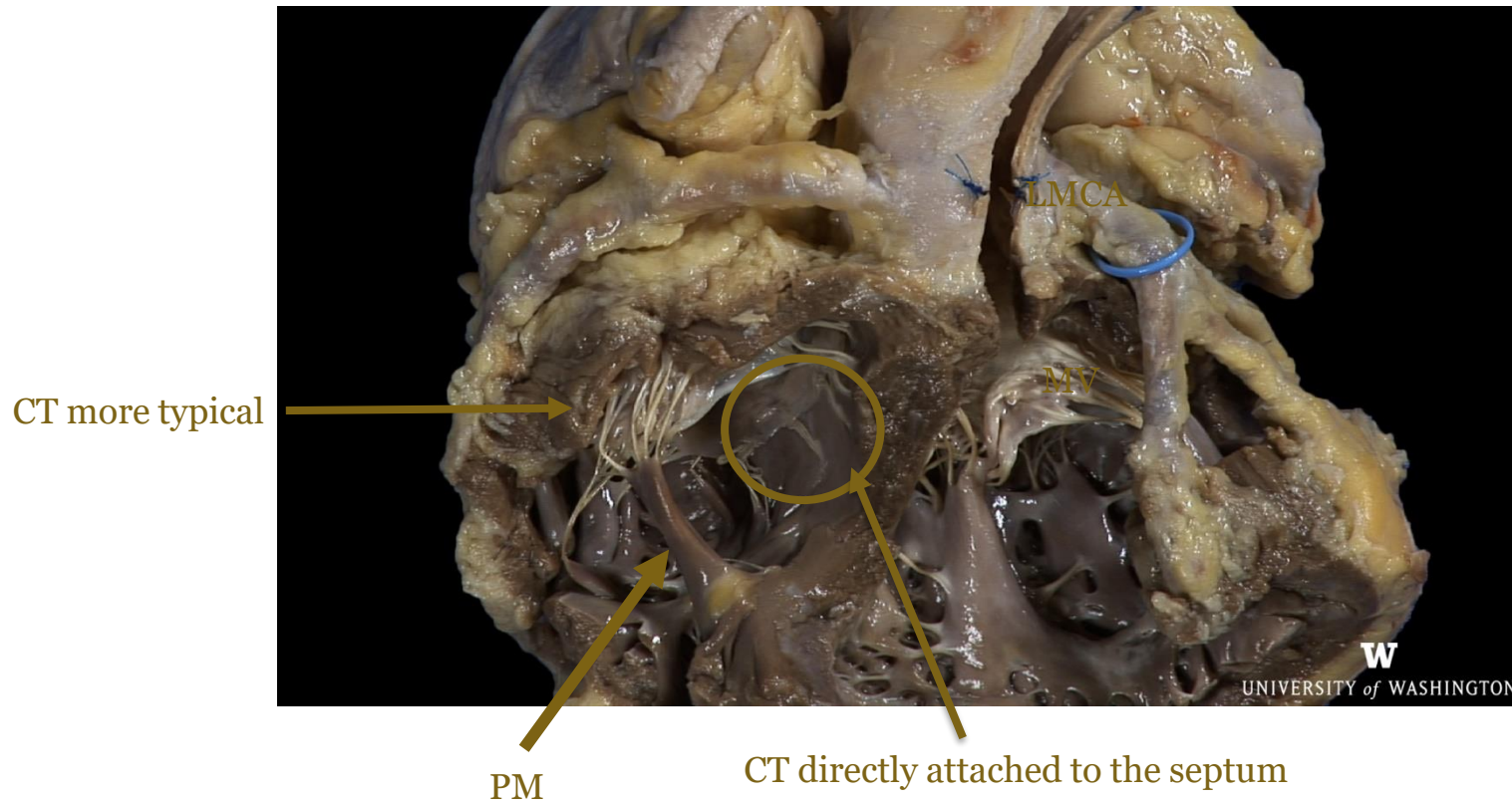
Optimal location for mitral clip



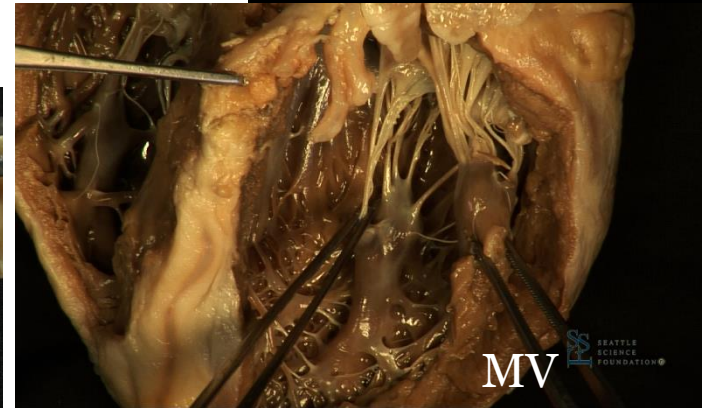
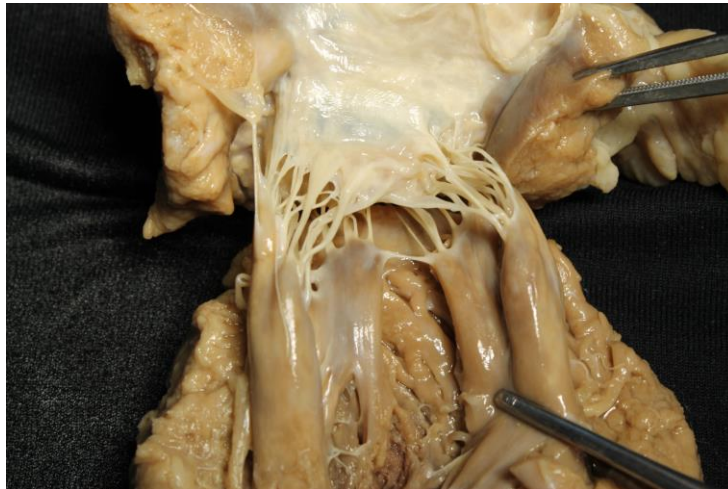
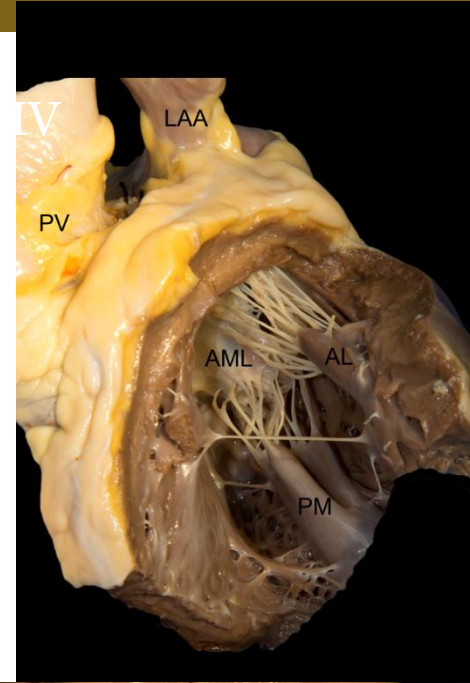
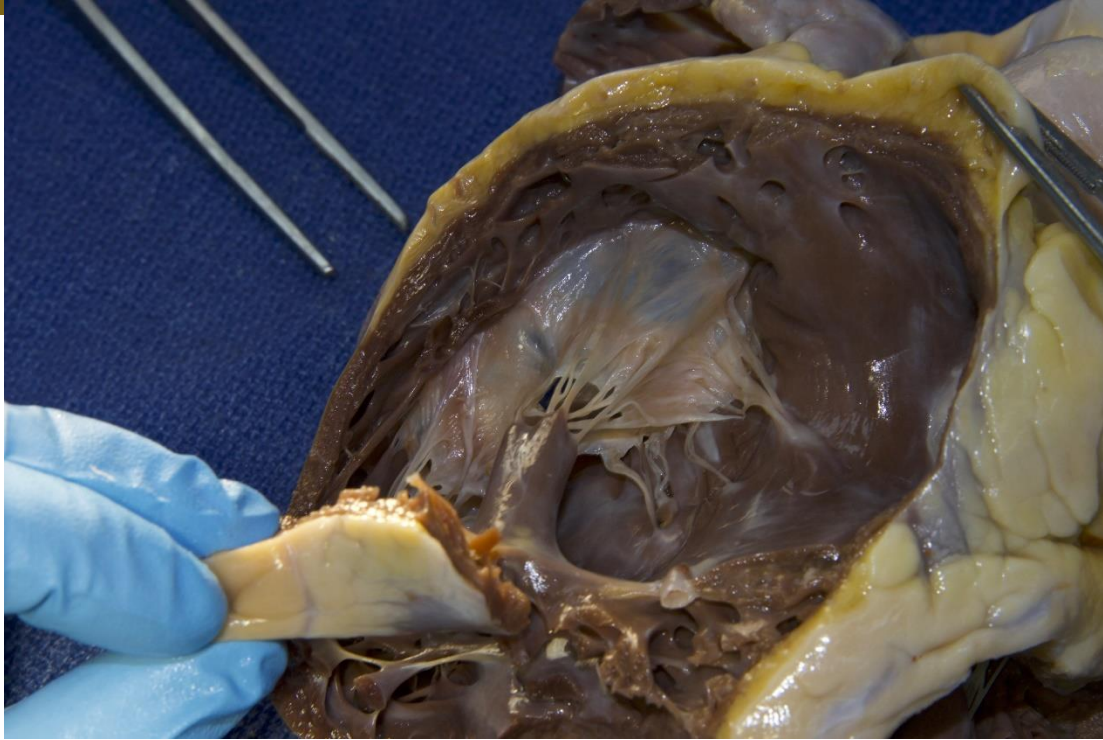
CHORDAL STRUCTURE OF THE TV AND MV



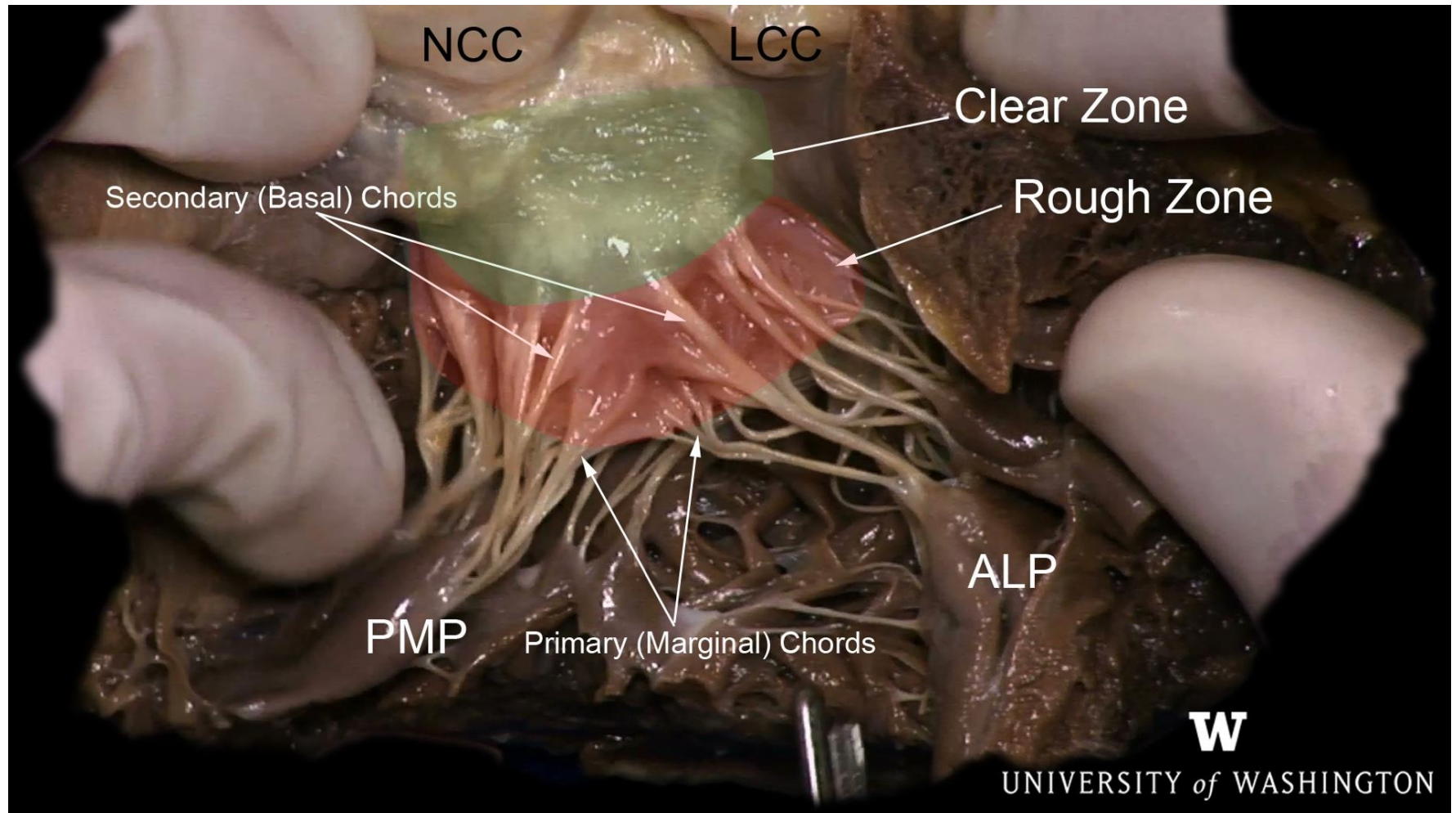
CHORDAE AND PAPILLARY MUSCLES



PAPILLARY MUSCLES OF THE TRICUSPID AND MITRAL VALVES



CHORDAL/LEAFLET ATTACHMENTS OF THE MITRAL VALVE

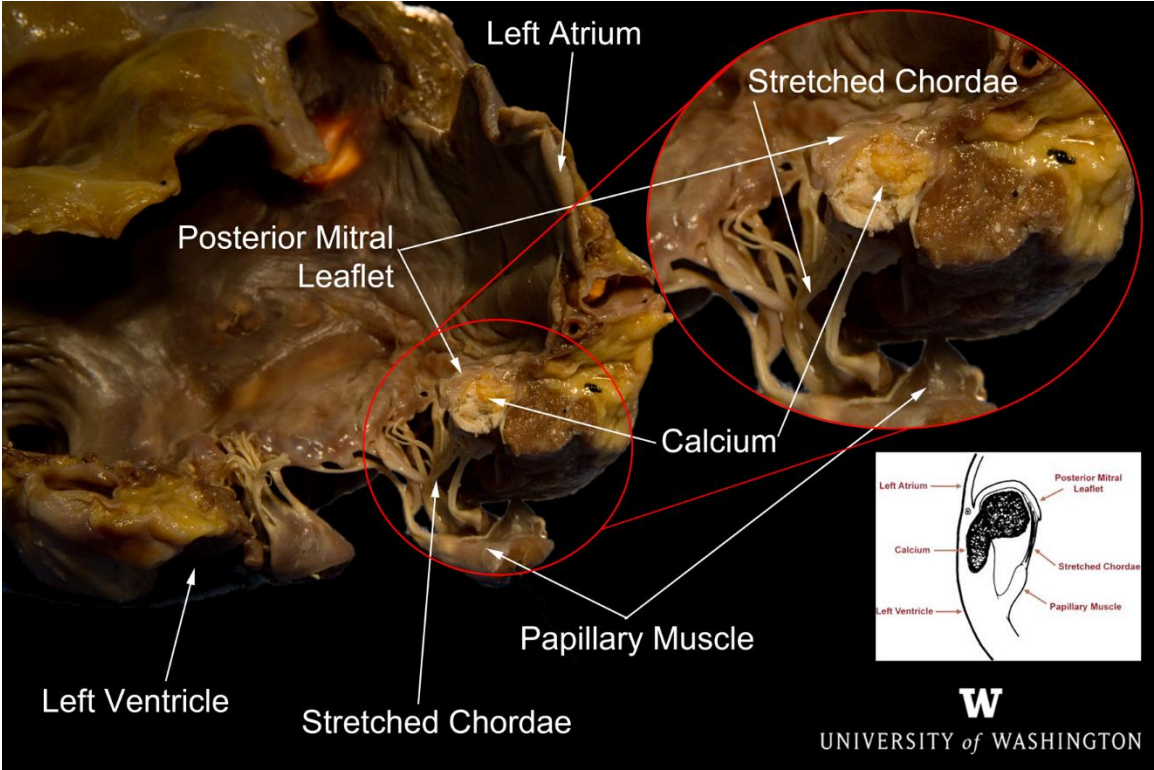


Similar insertions on the tricuspid valve

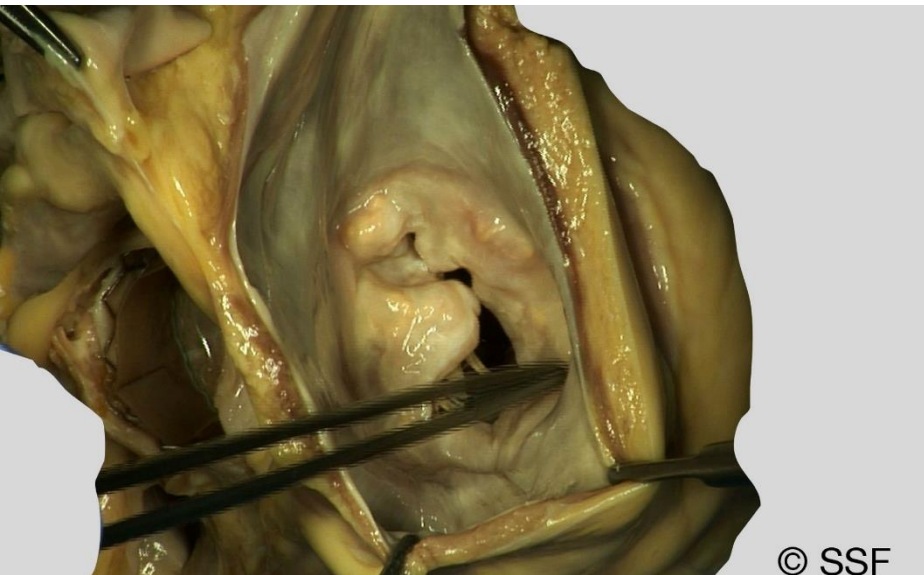
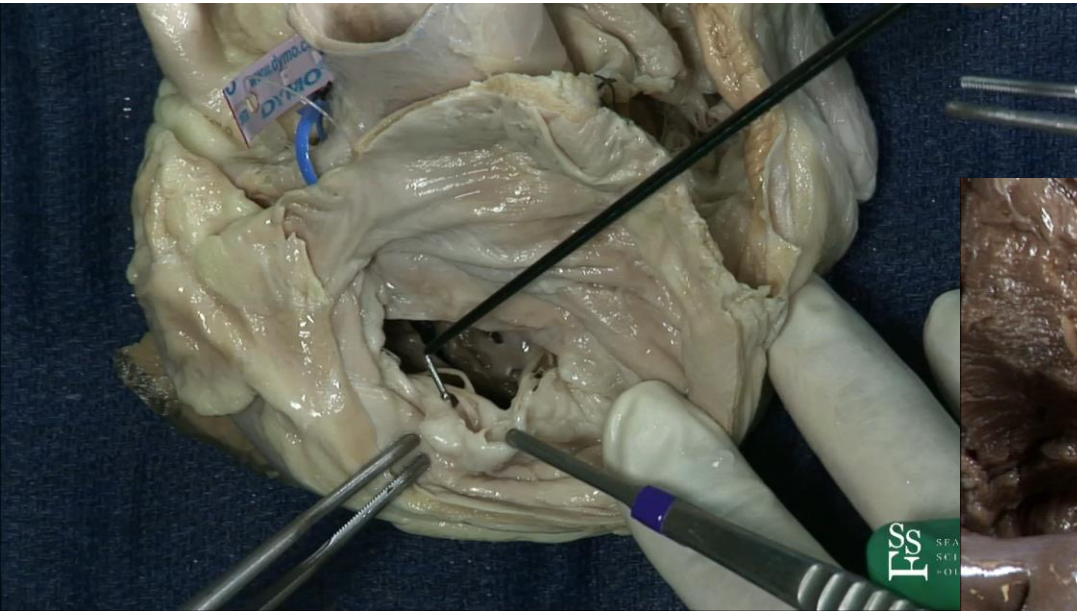
PATHOLOGY

MITRAL ANNULAR CALCIFICATION

Impact on several TMVR devices



CHORDAL RUPTURE AND LEAFLET THICKENING OF THE MITRAL LEAFLET



CONCLUSION

- Both valves are excellent targets for percutaneous therapy
- Both valves has unique set of challenges due to anatomy and relational anatomy
- I anticipate there will be percutaneous solutions to the majority of pathologies affecting both the tricuspid and mitral valve