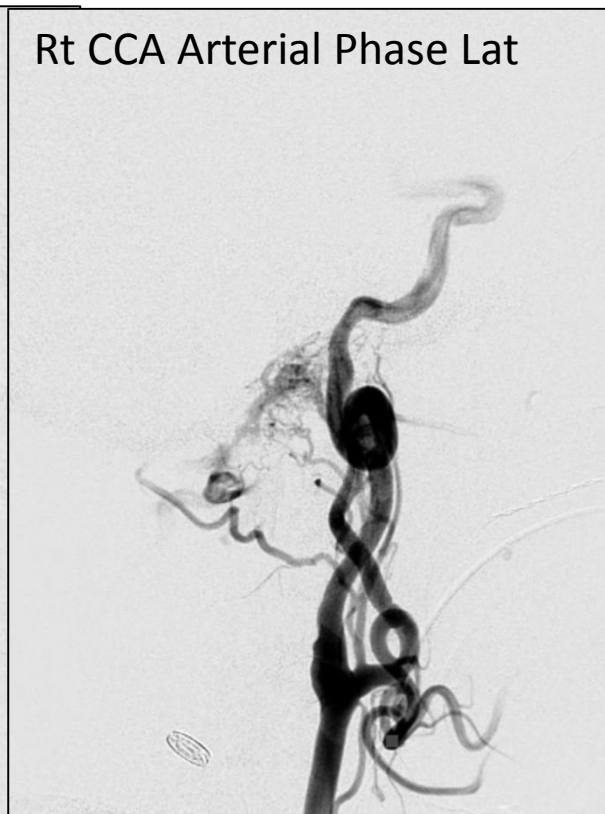


# **Anterior Condylar Confluence Dural Fistula**

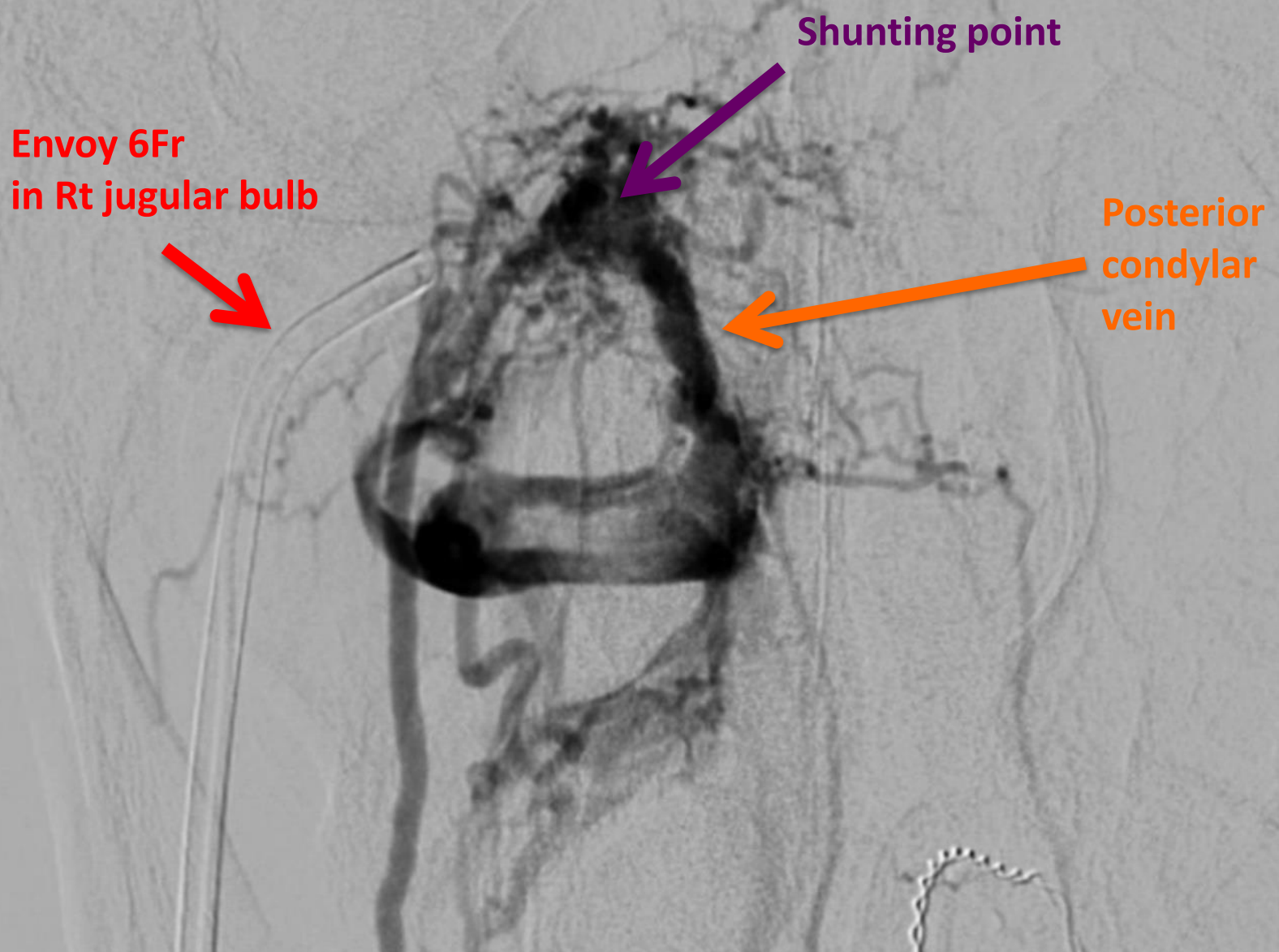
**Satoshi Tateshima, MD, DMSc**  
**Associate Professor**  
**UCLA Interventional Neuroradiology**

68yo male with autoimmune disease, chronic renal failure, Rt small MCA aneurysm, was found to have abnormal vasculatures in the region of Rt hypoglossal canal during work up for intractable pulsatile tinnitus.



Rt anterior condylar confluence dural AVF fed by ascending pharyngeal neuro-meningeal trunk, draining into posterior condylar vein. No connection to jugular bulb or IPS

# Rt Ascending Pharyngeal Artery Angiogram: AP view

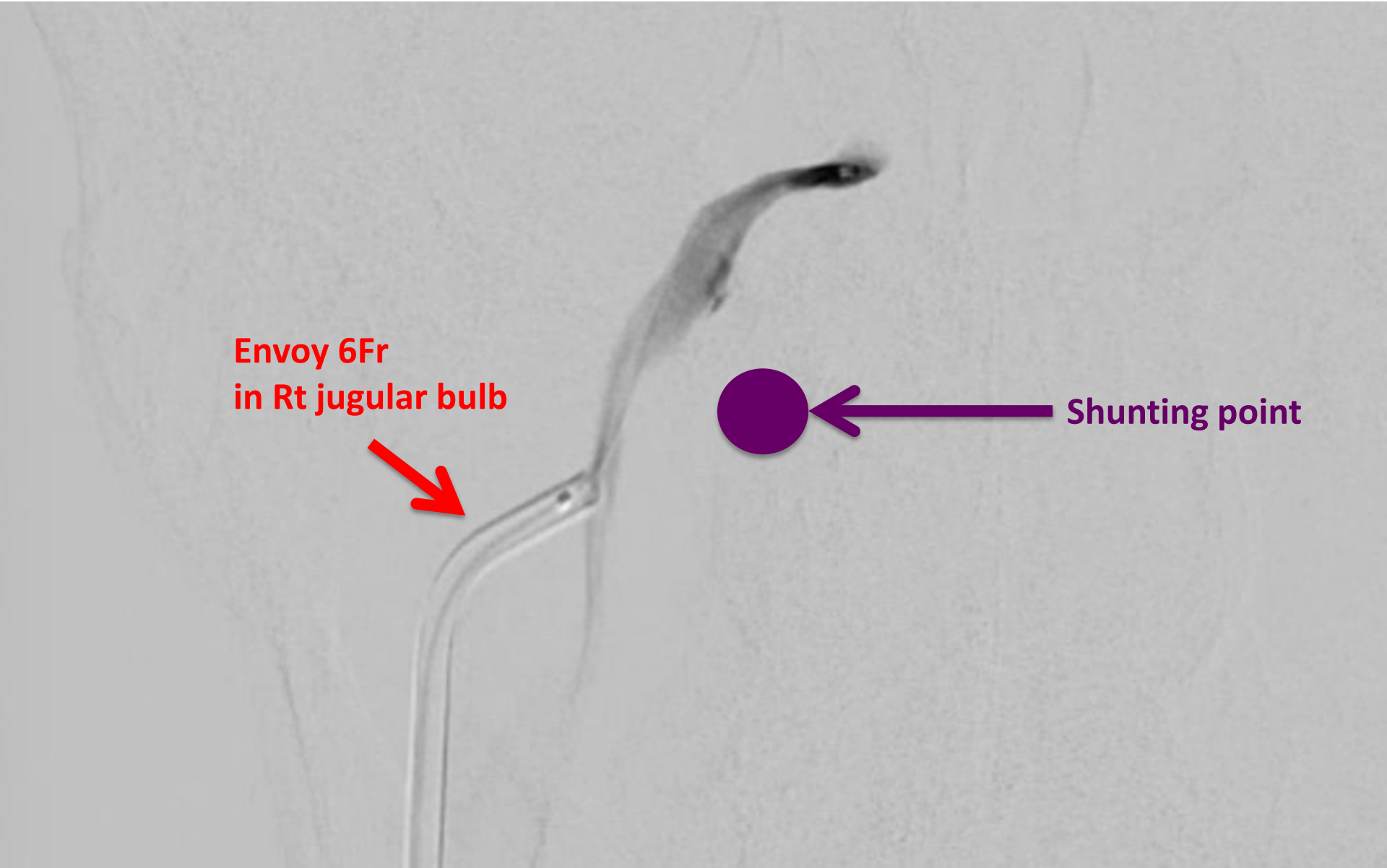


Envoy 6Fr  
in Rt jugular bulb

Shunting point

Posterior  
condylar  
vein

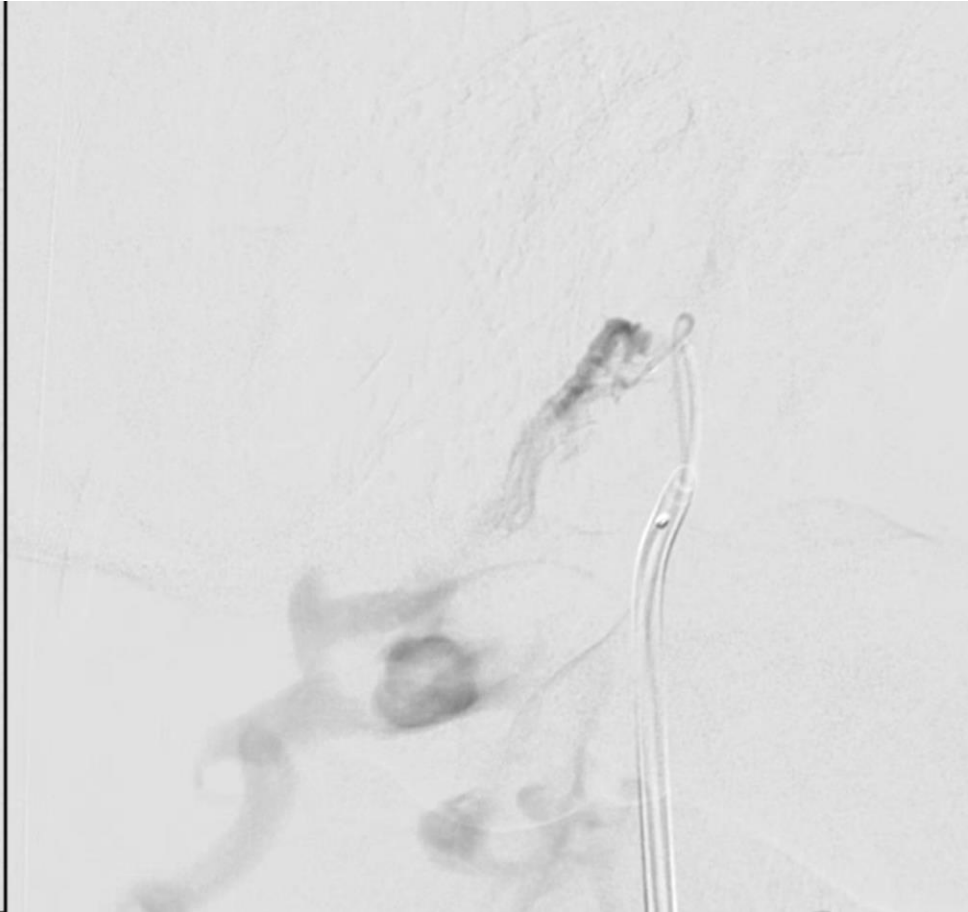
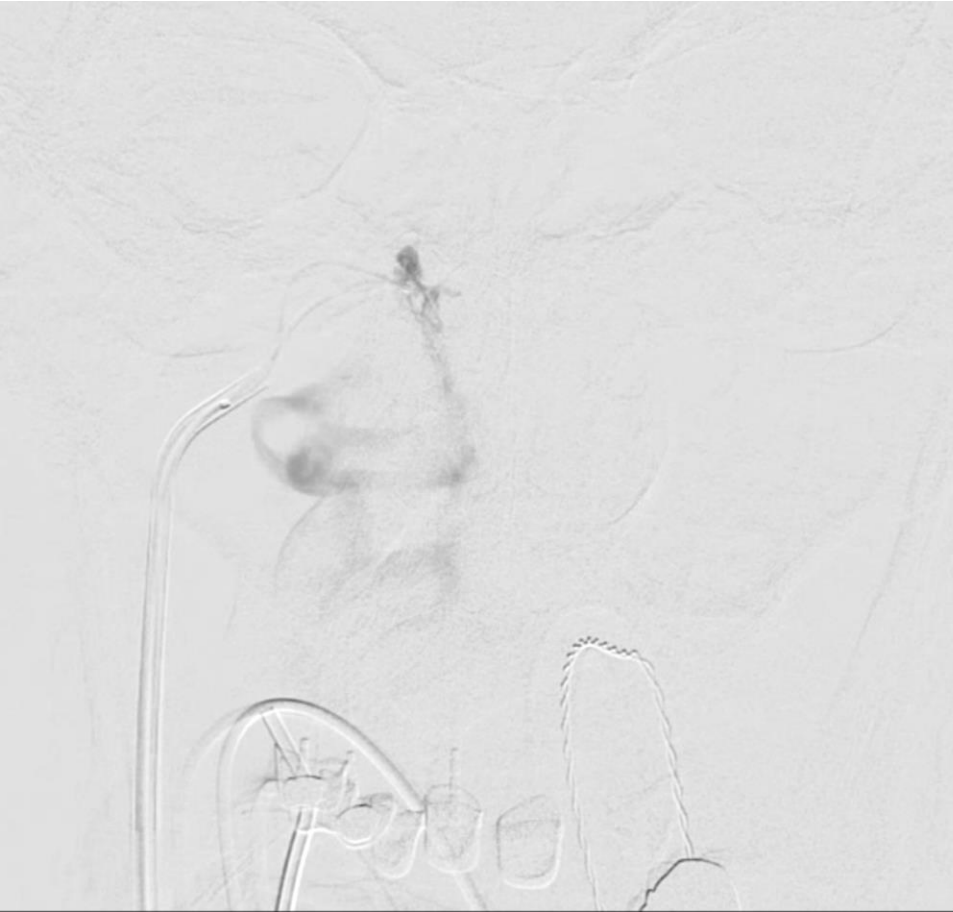
# Selective Rt Inferior Petrosal Sinus Venography: AP



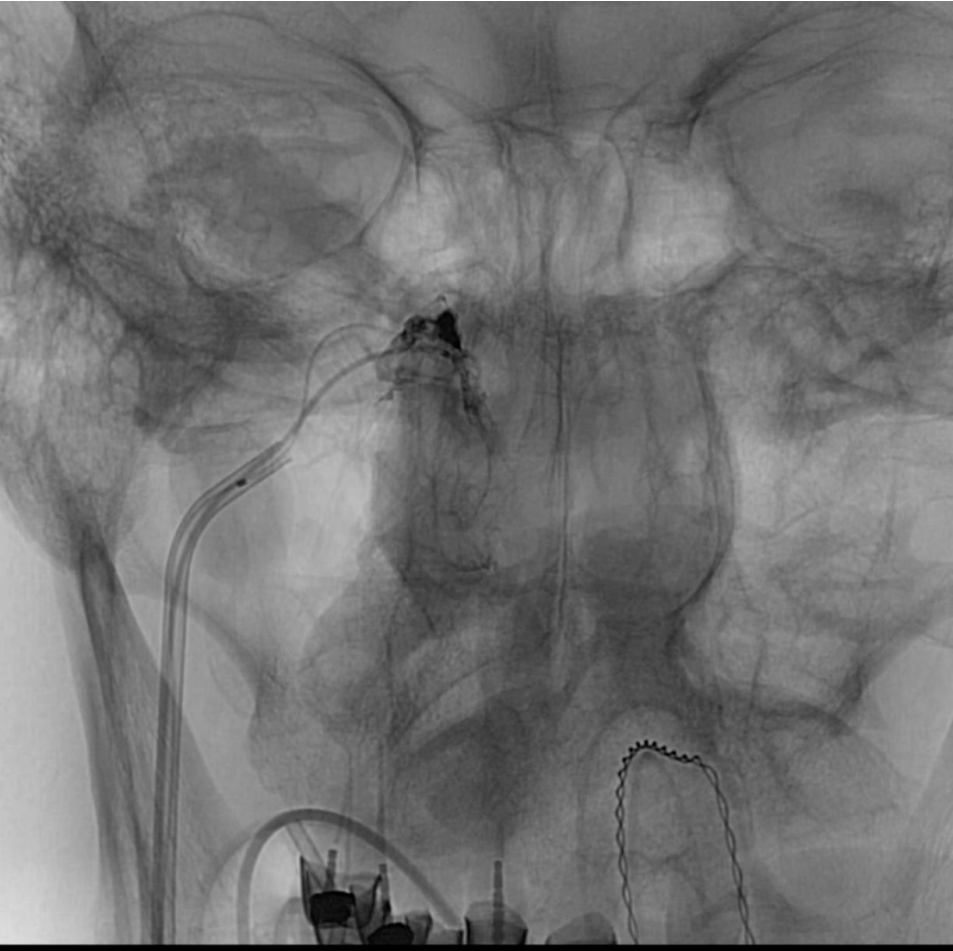
# 0.035 Body wire in Rt IPS for stabilization & 0.014 microwire drilling to the shunt



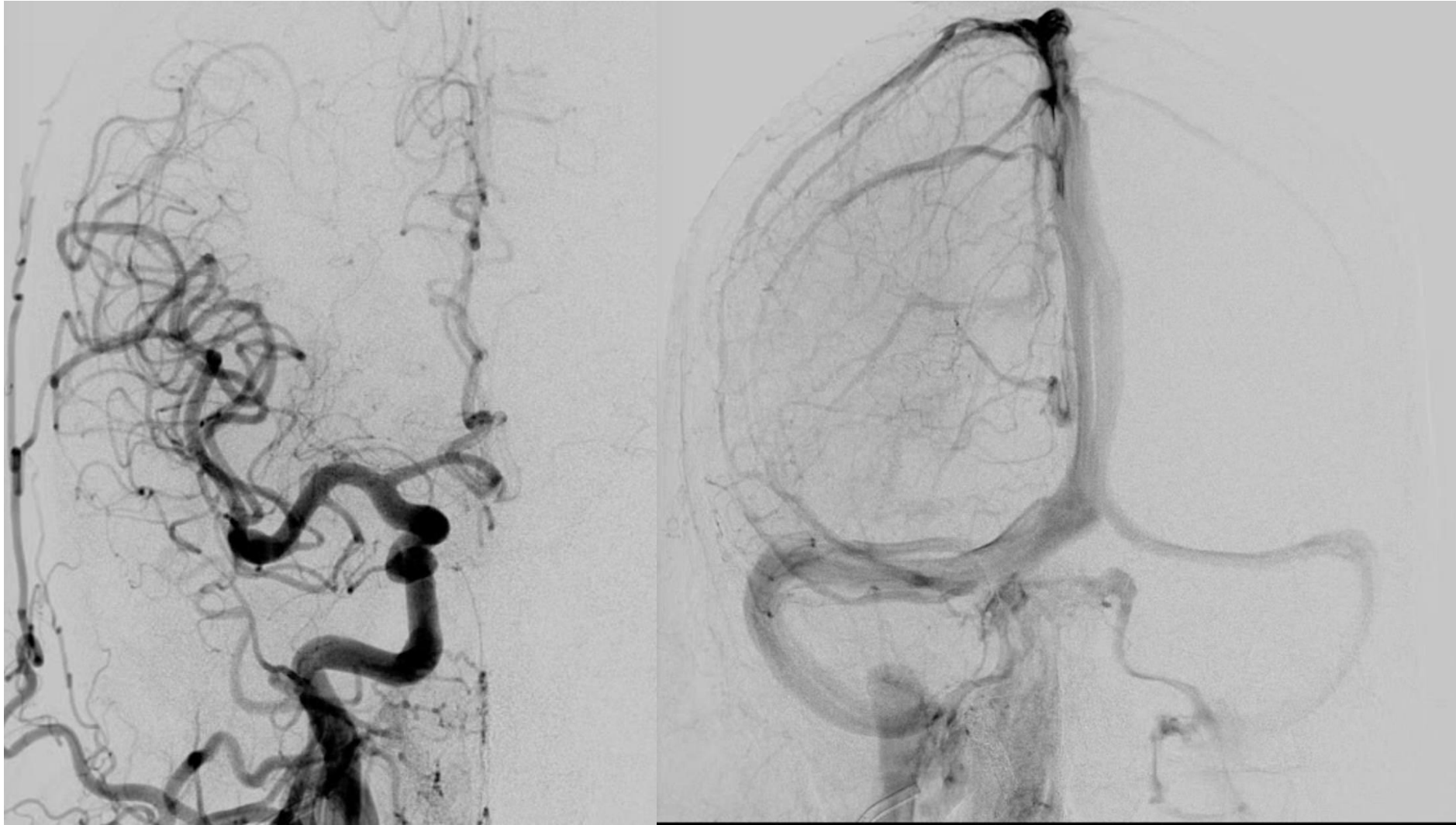
# Successful drilling, microcatheter reaching to the shunting point



# Targeted TVE with Onyx



# Final Angiogram





# Post Embo XperCT

