



Klinik und Poliklinik für Neuroradiologische Diagnostik und Intervention
Zentrum für Radiologie und Endoskopie



Intracranial stenting with Neurospeed PTA balloon and Credo stent

Jens Fiehler, MD, FESO



Universitätsklinikum
Hamburg-Eppendorf

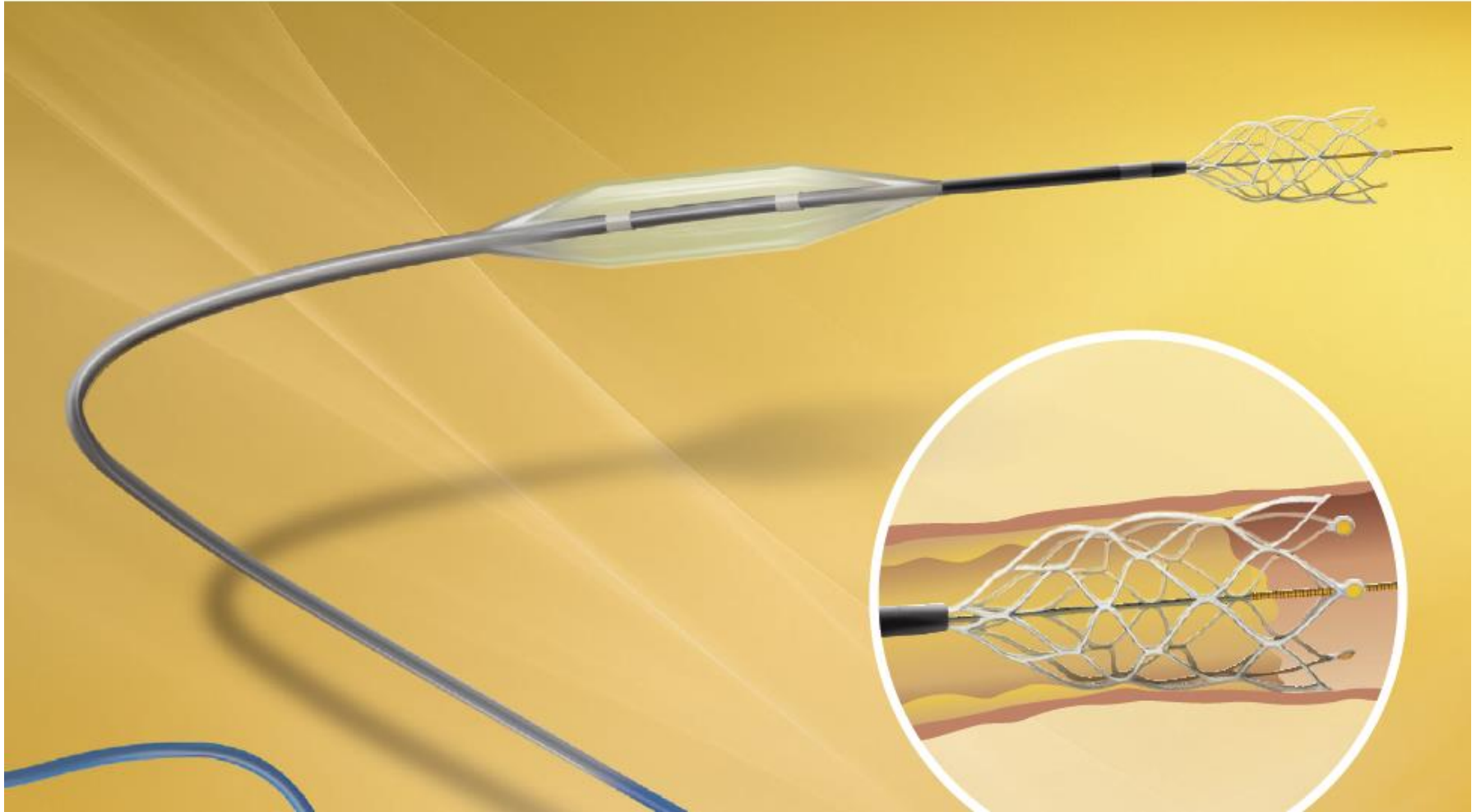
Disclosures

Research support: BMBF, BMWi, EU, Microvention

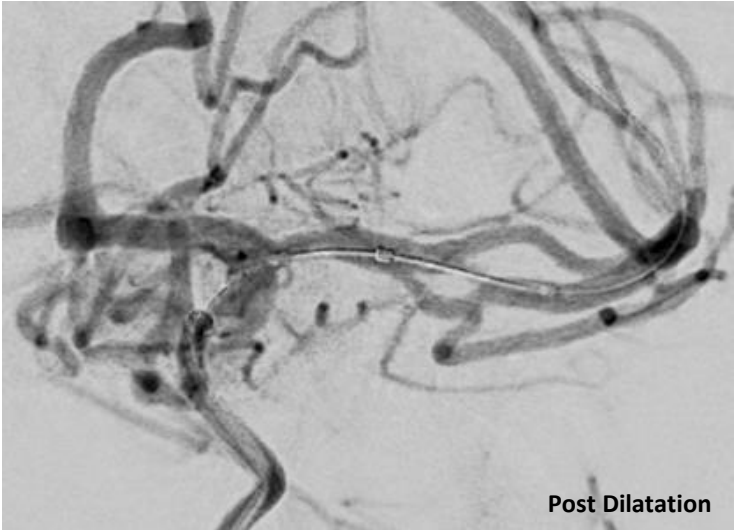
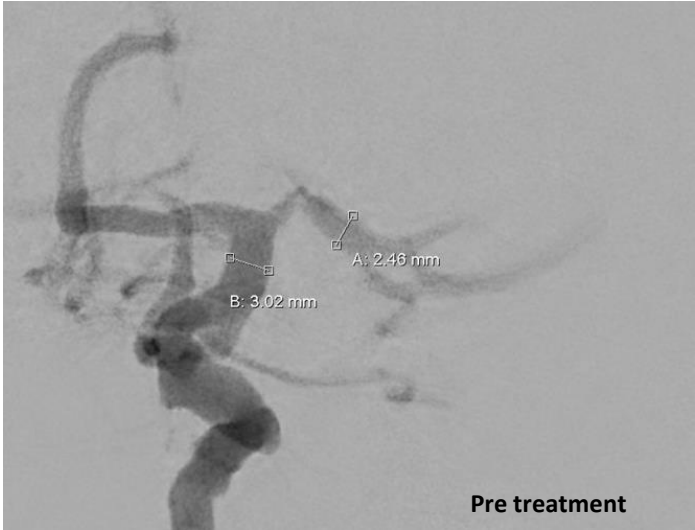
Presentations: Bayer, Boehringer, Bracco, Codman, Penumbra, Sanofi, Siemens, Stryker

Consultancy: Acandis, Medina, Covidien/Medtronic, Microvention, Penumbra, Sequent

CREDO[®] Stent with NeuroSpeed[®] PTA Balloon Catheter



Newer devices: Credo + Neurospeed (Acandis)

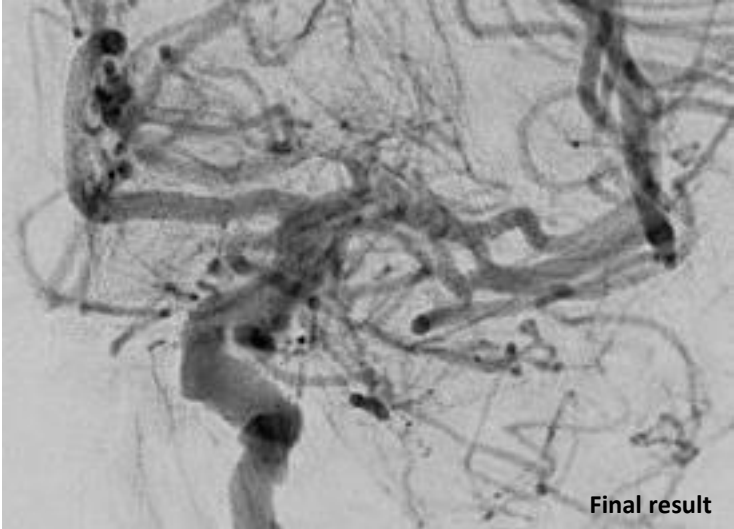
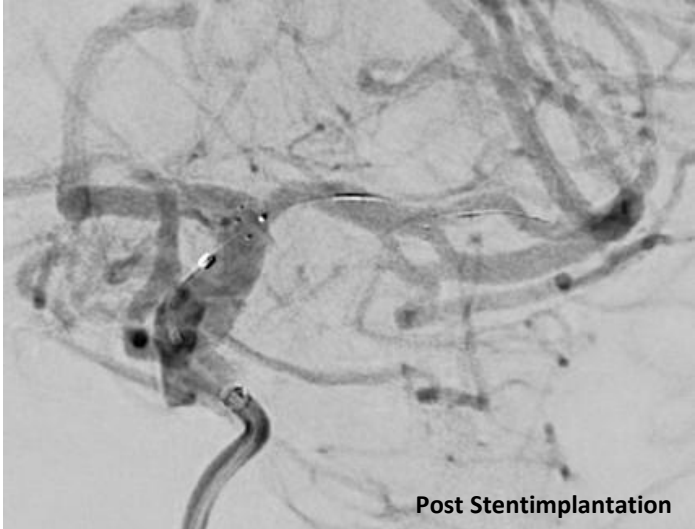


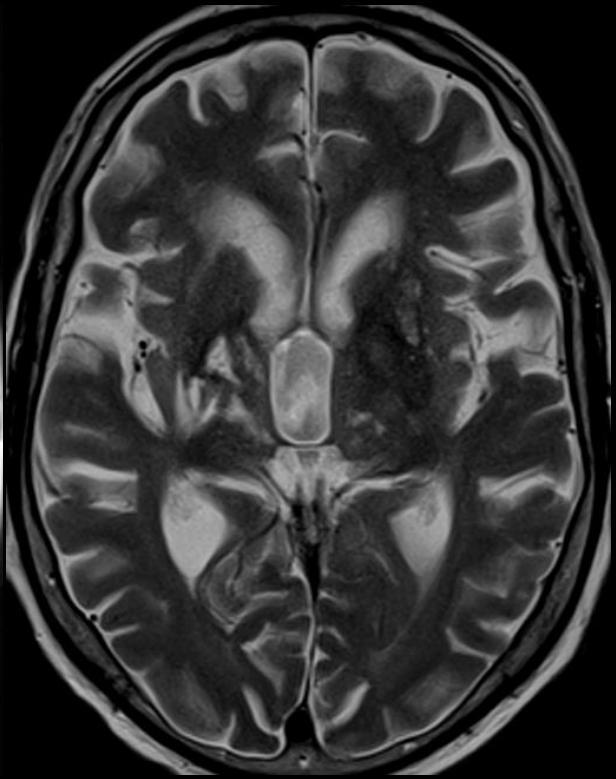
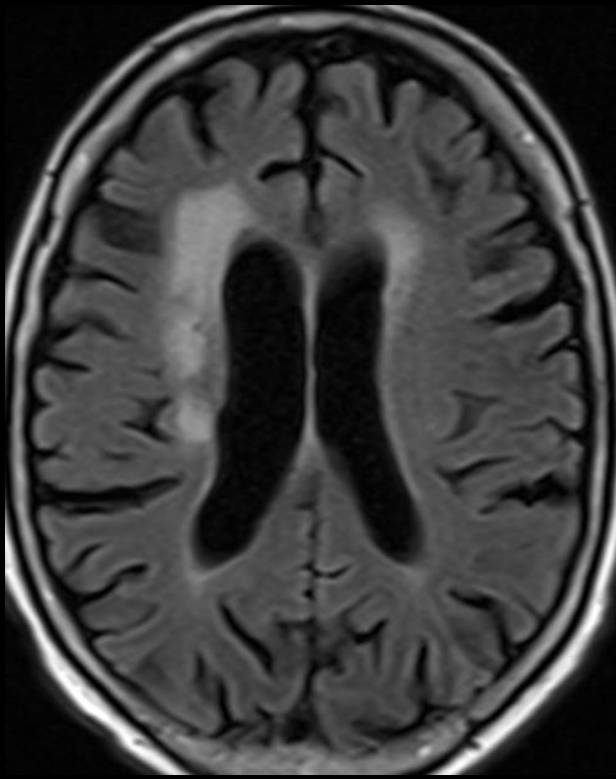
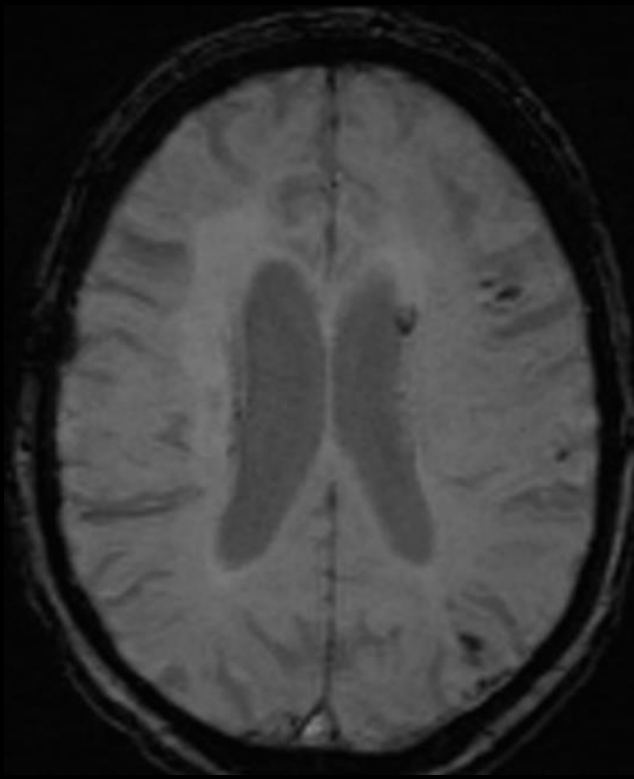
proximal M1 Stenosis (left)
2x symptomatic
1 with ASA only
1 with ASA and Plavix

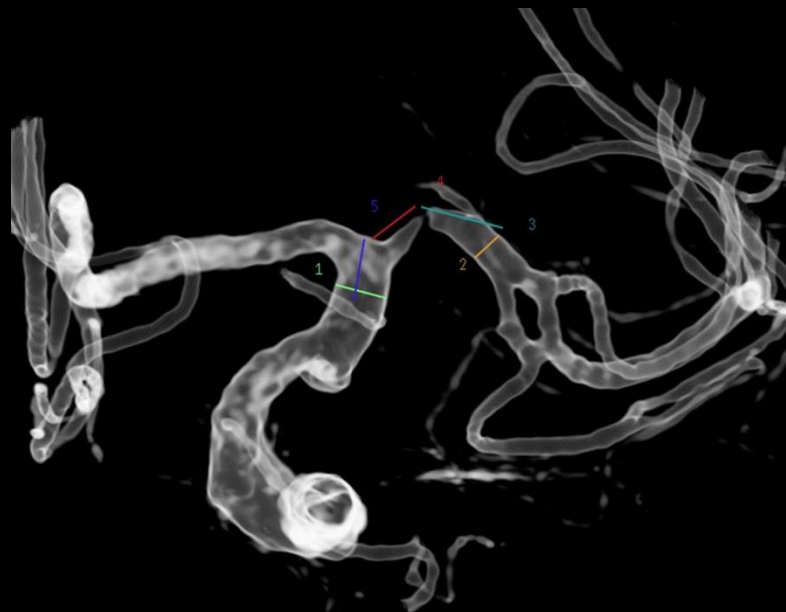
Degree of stenosis:
ca. 80-90 %

**Vessel diameter
prox./ dist.:**
3,0/ 2,5 mm

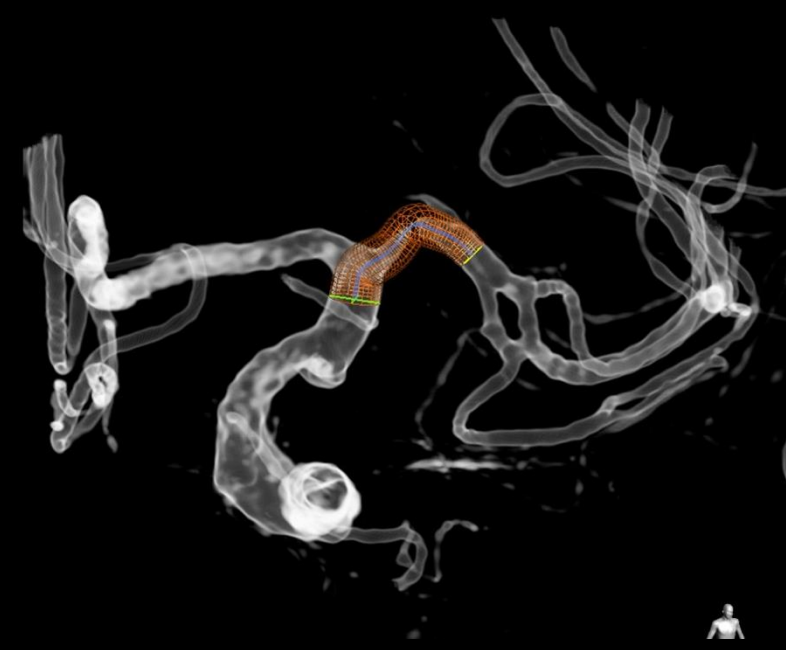
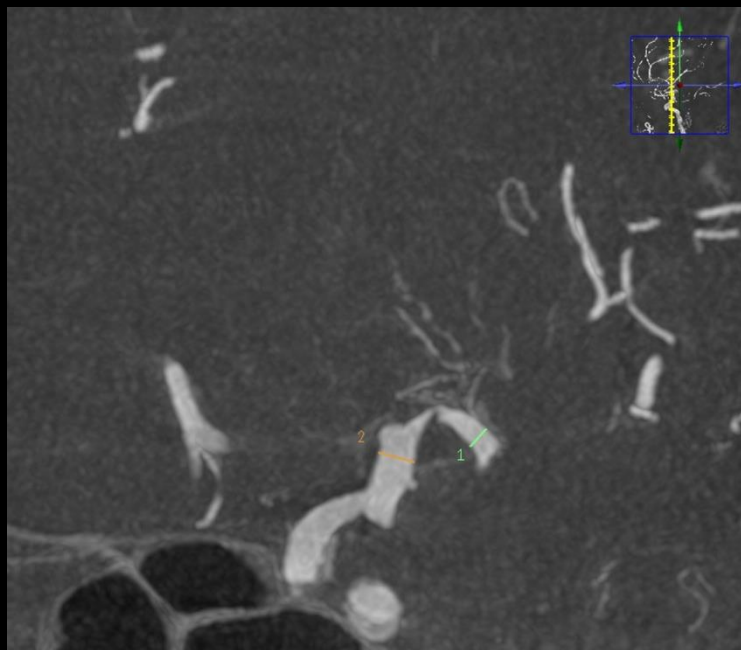
Products:
NeuroSpeed® 2.0 x 8 mm
Credo® Stent 3.5 x 15 mm

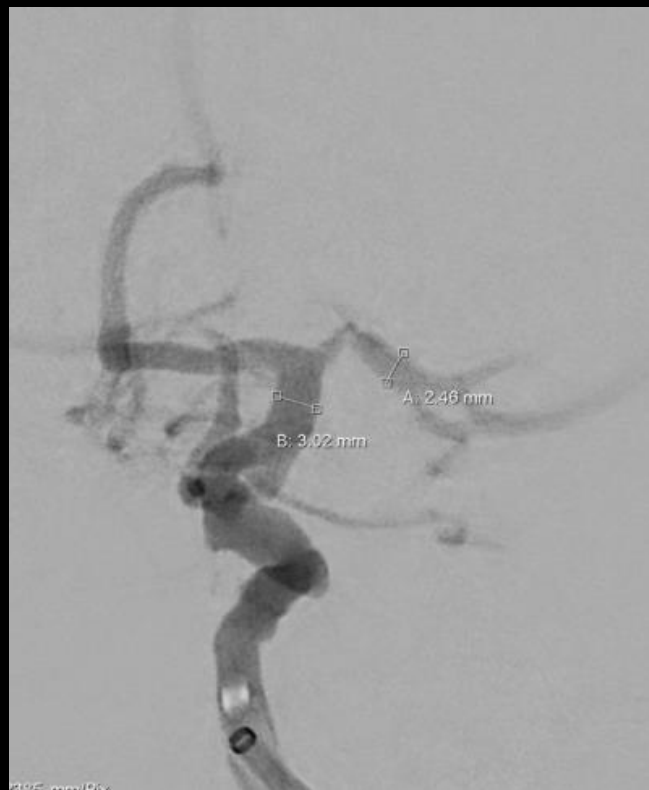




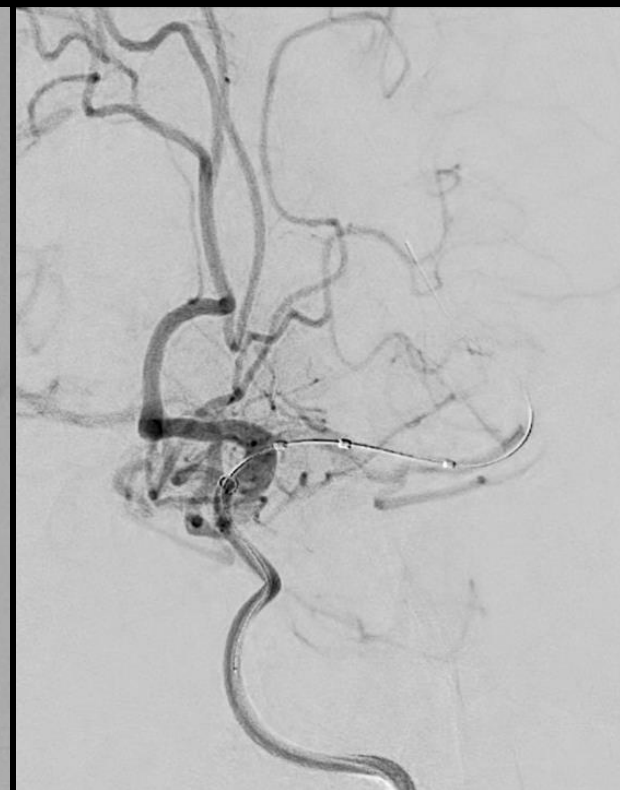
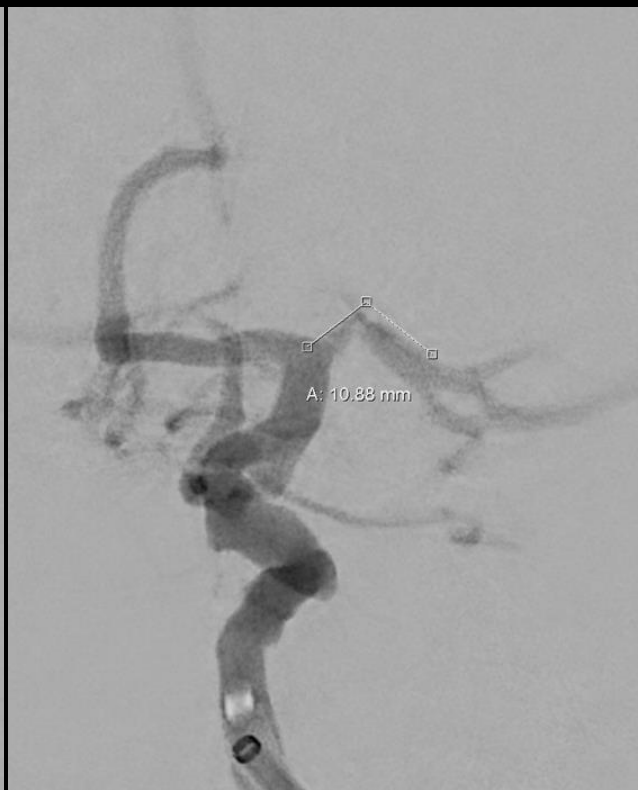


Quick Measurement 1 3.39 mm
Quick Measurement 2 2.19 mm
Quick Measurement 3 5.49 mm
Quick Measurement 4 3.57 mm
Quick Measurement 5 4.07 mm

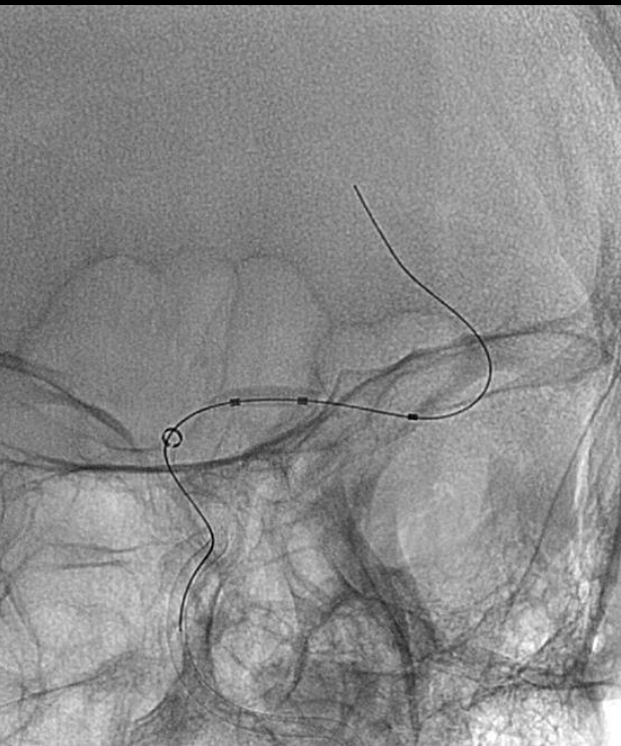




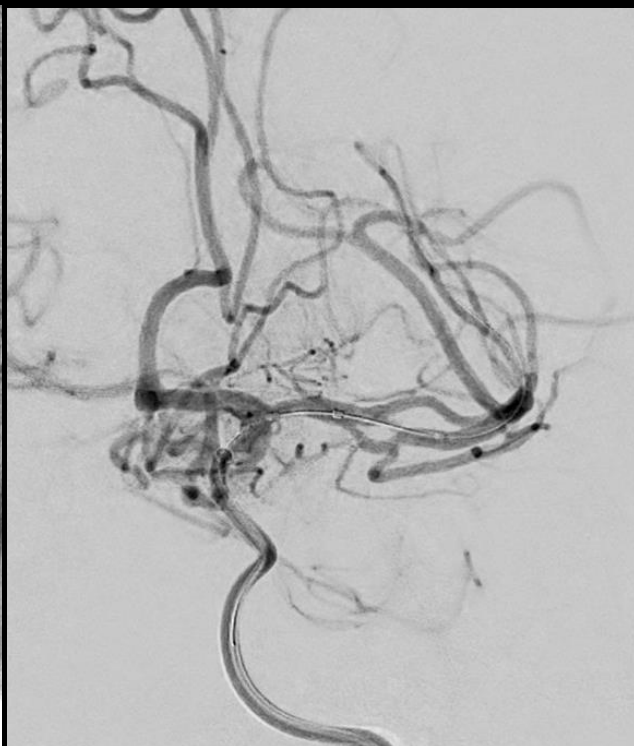
DSA vor PTA
Working projection



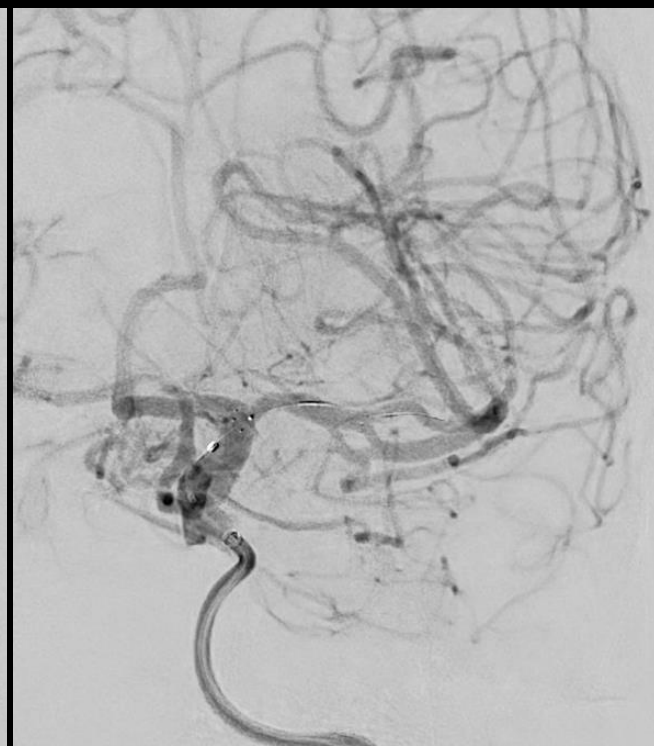
After placement of PTA
cathether



Neurospeed-balloon 2/8

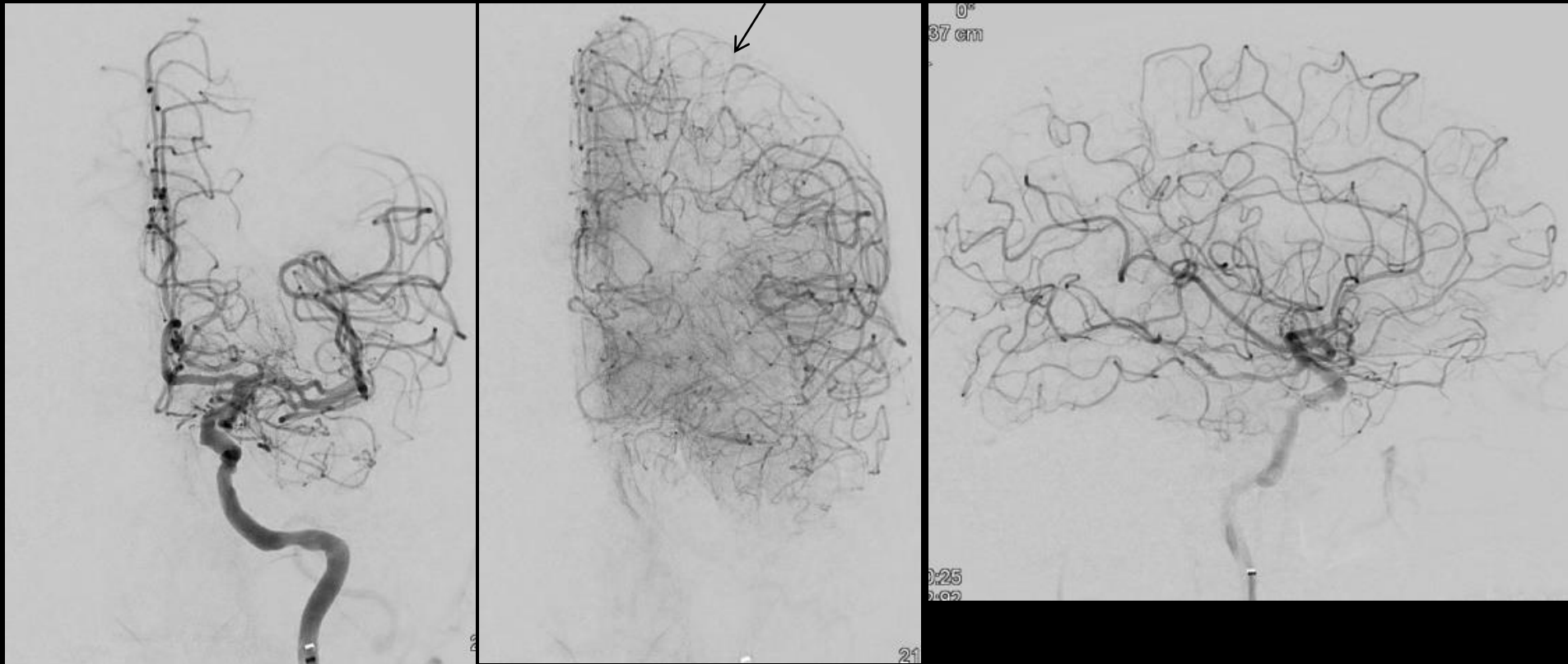


Post 2. PTA mit 8 atm

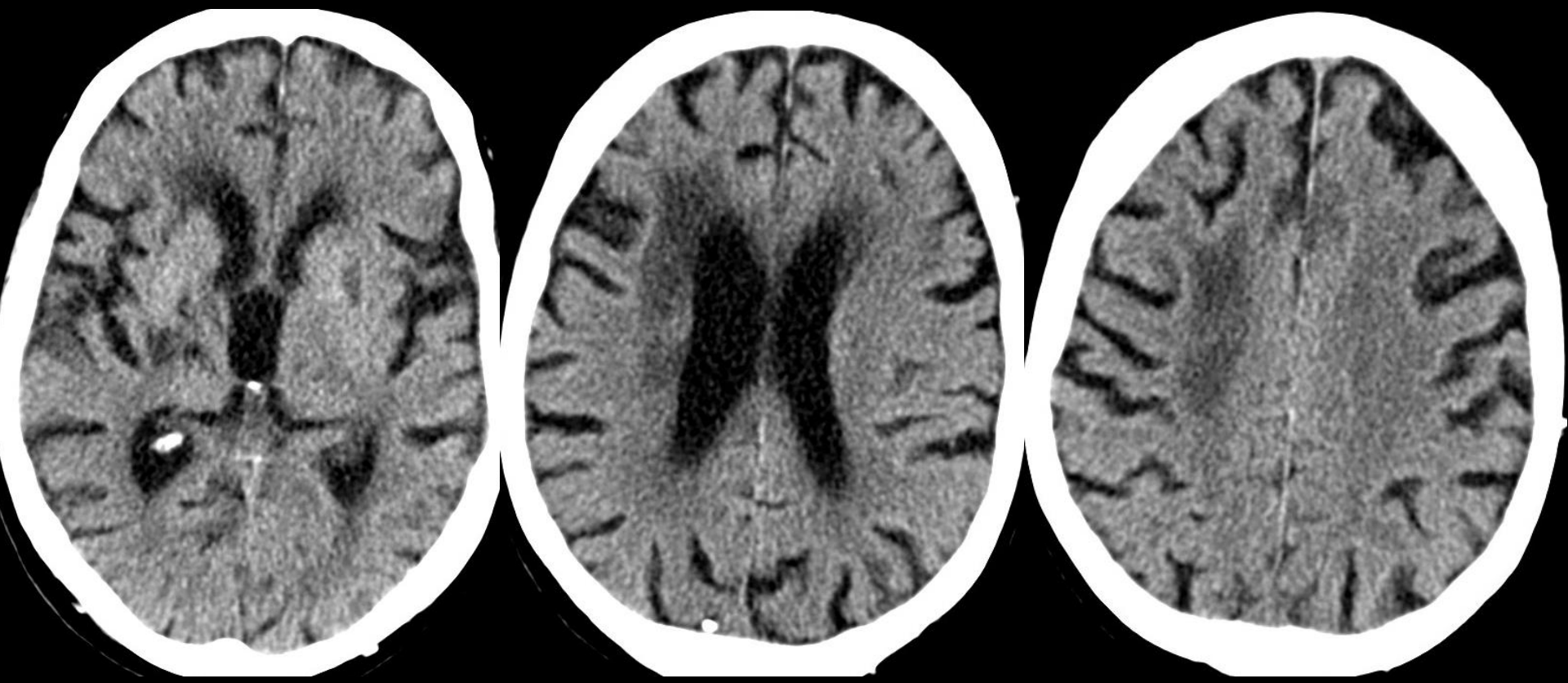


Credo-Stent 3.5/15

After PTA/Stent



Normalization of borderzone



CCT 9 days post OP

ASSISTENT registry

Credo launch in selected centers in Germany

- AKK Essen
- Universitätsklinikum Hamburg-Eppendorf
- Universitätsklinikum Heidelberg
- Klinikum Osnabrück
- Asklepios Klinik Altona
- Universitätsklinikum Frankfurt a.M.

Strict inclusion criteria

- Two clinical events required (despite best medical treatment)

Current enrolment: n = 24

- No clinical safety issues