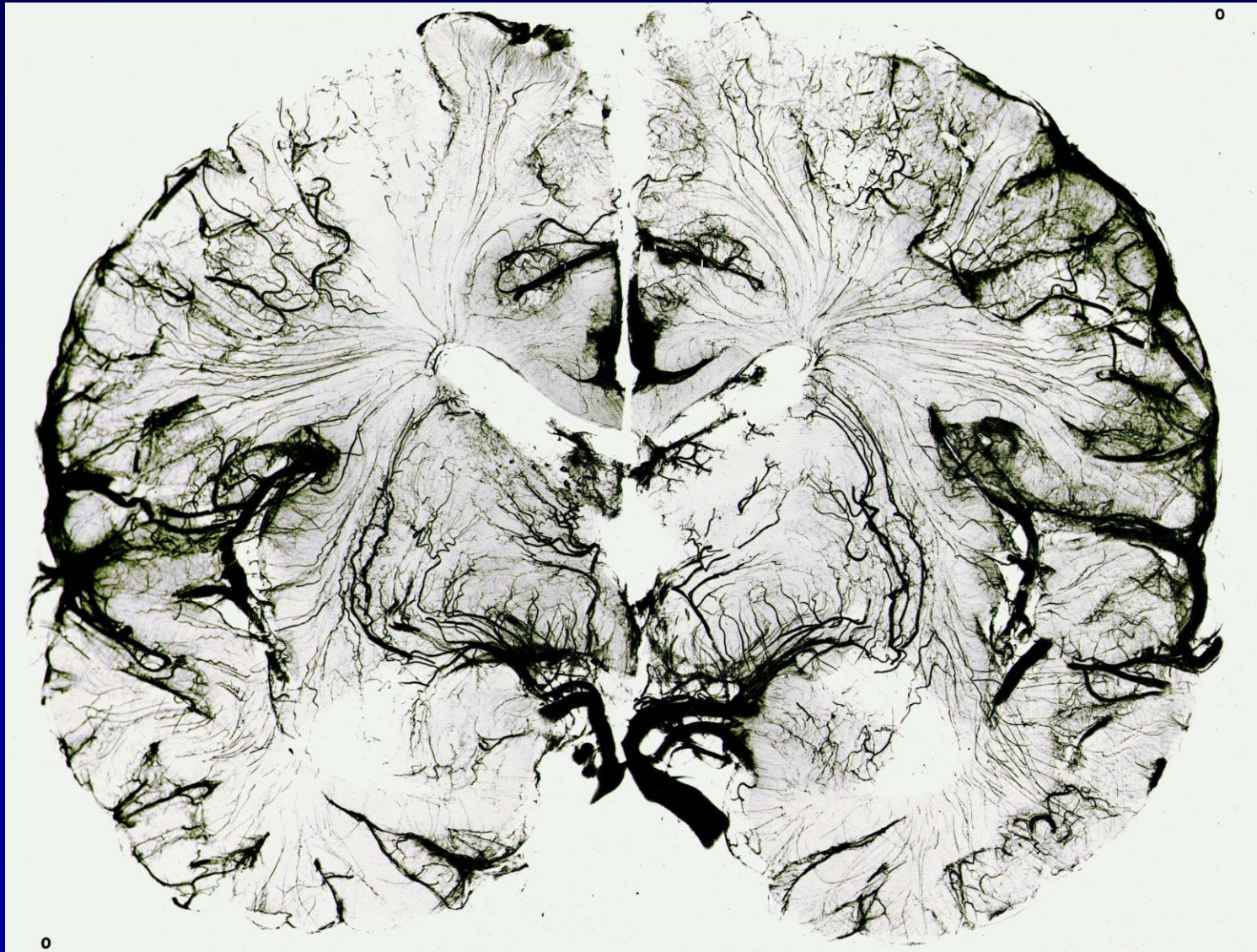


Carotid Stenosis and an Intracerebral Unknown

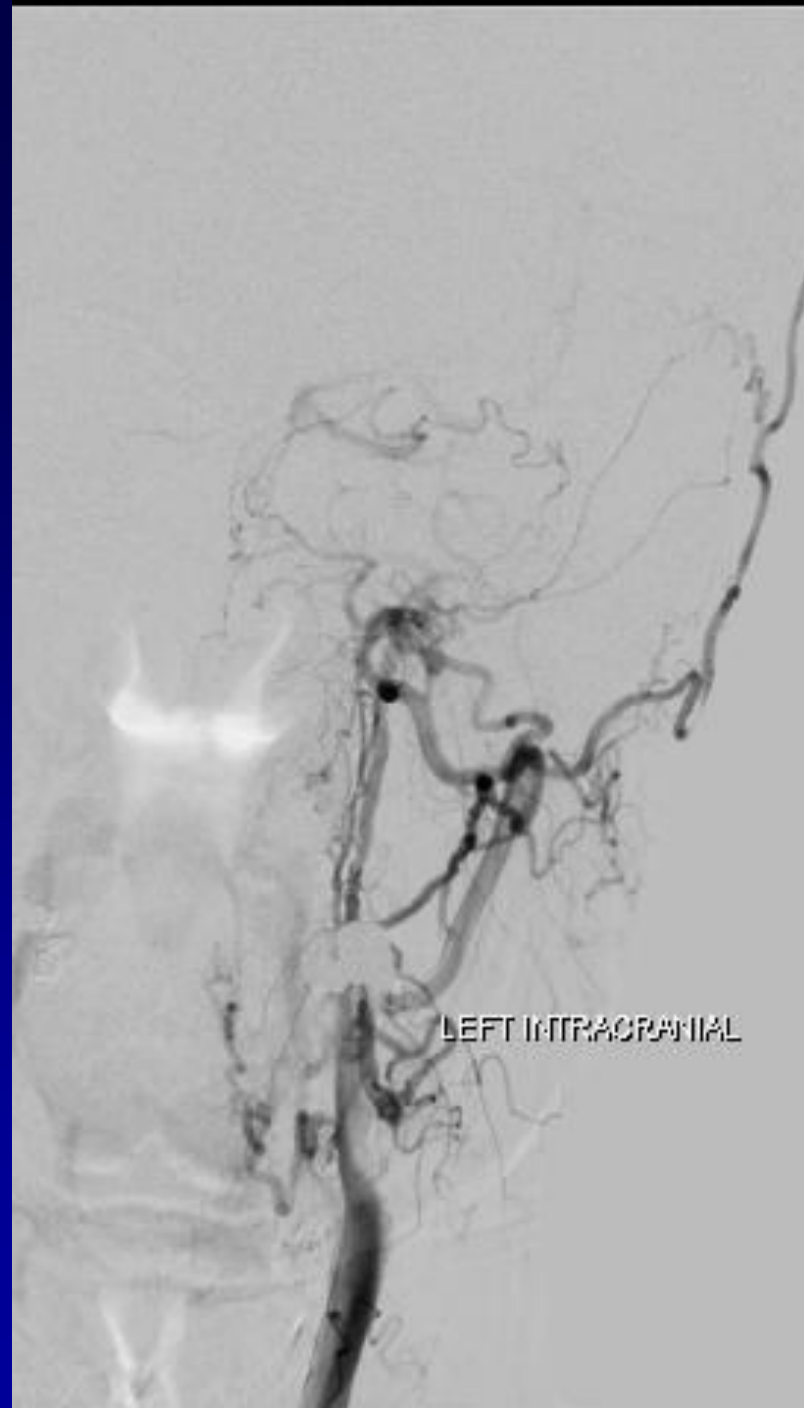
**Lee R. Guterman Ph.D. M.D.
Medical Director Neuroscience
CHS Buffalo
and
Buffalo Neurosurgery Group**

NOTHING TO DISCLOSE

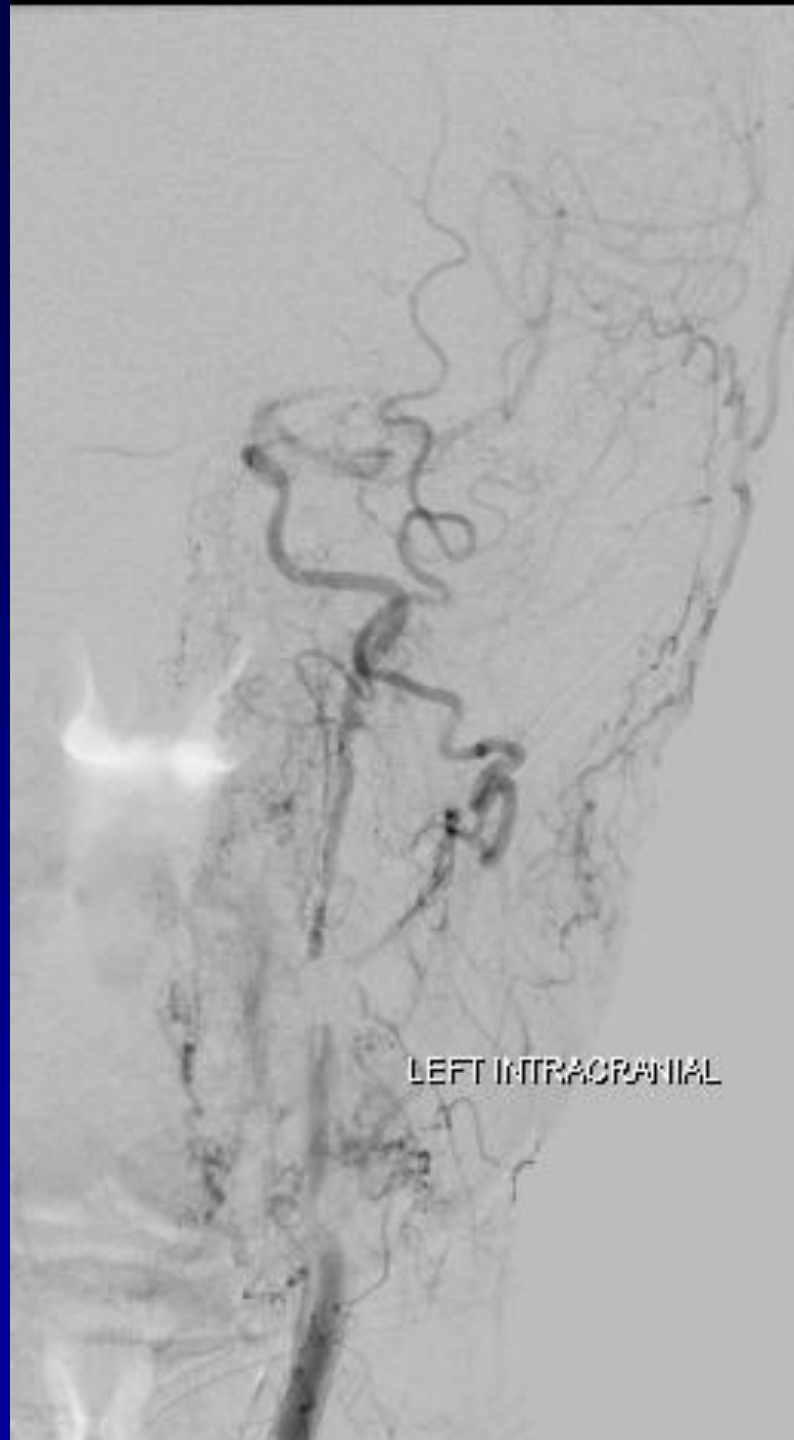


72 yr Male

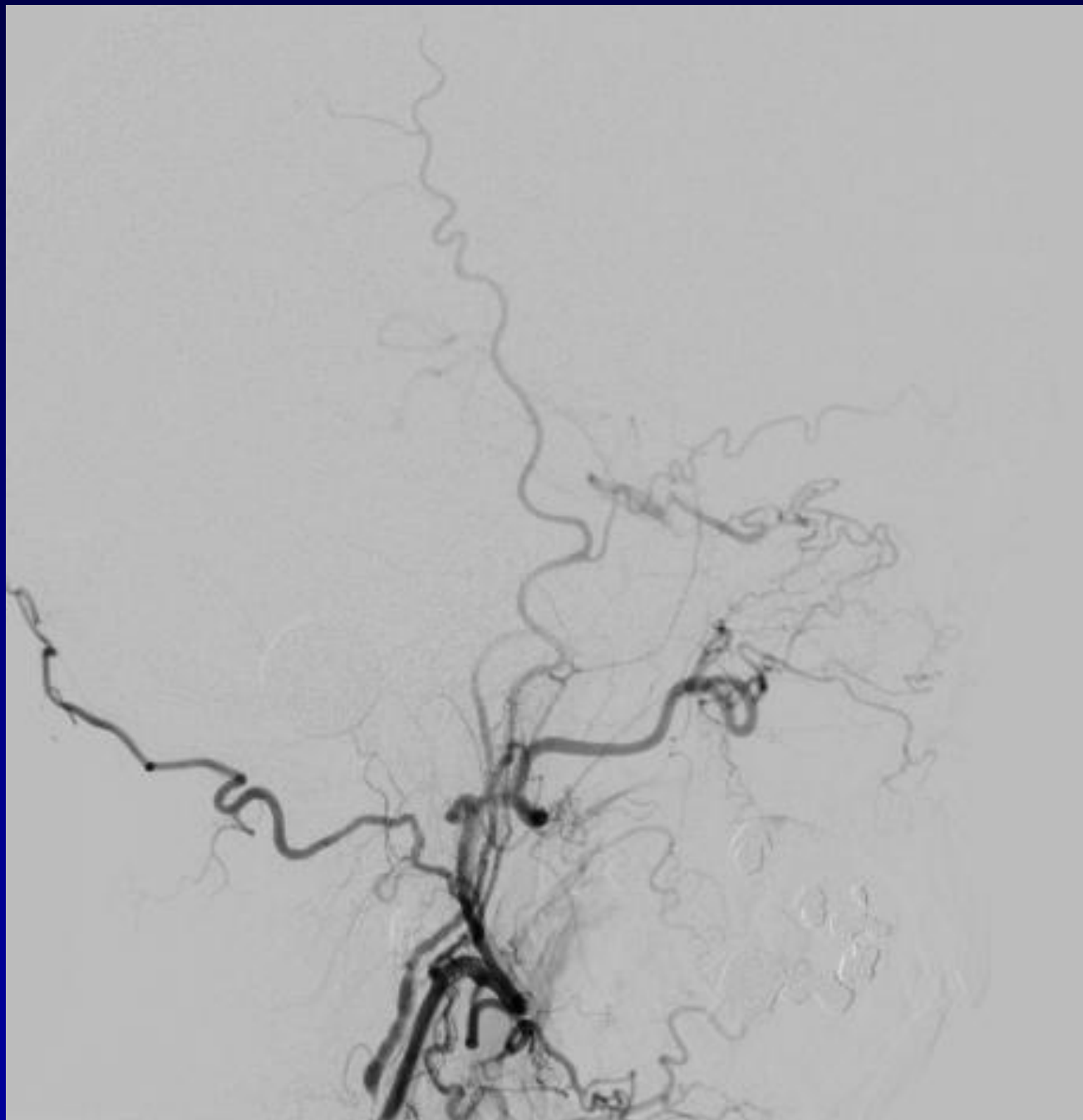
- CAD stable
- TIA left hemisphere, speech
- No new symptoms on plavix
- Cr 1.6 BUN 30
- MRA neck left carotid occlusion
- Carotid Doppler high grade left carotid stenosis

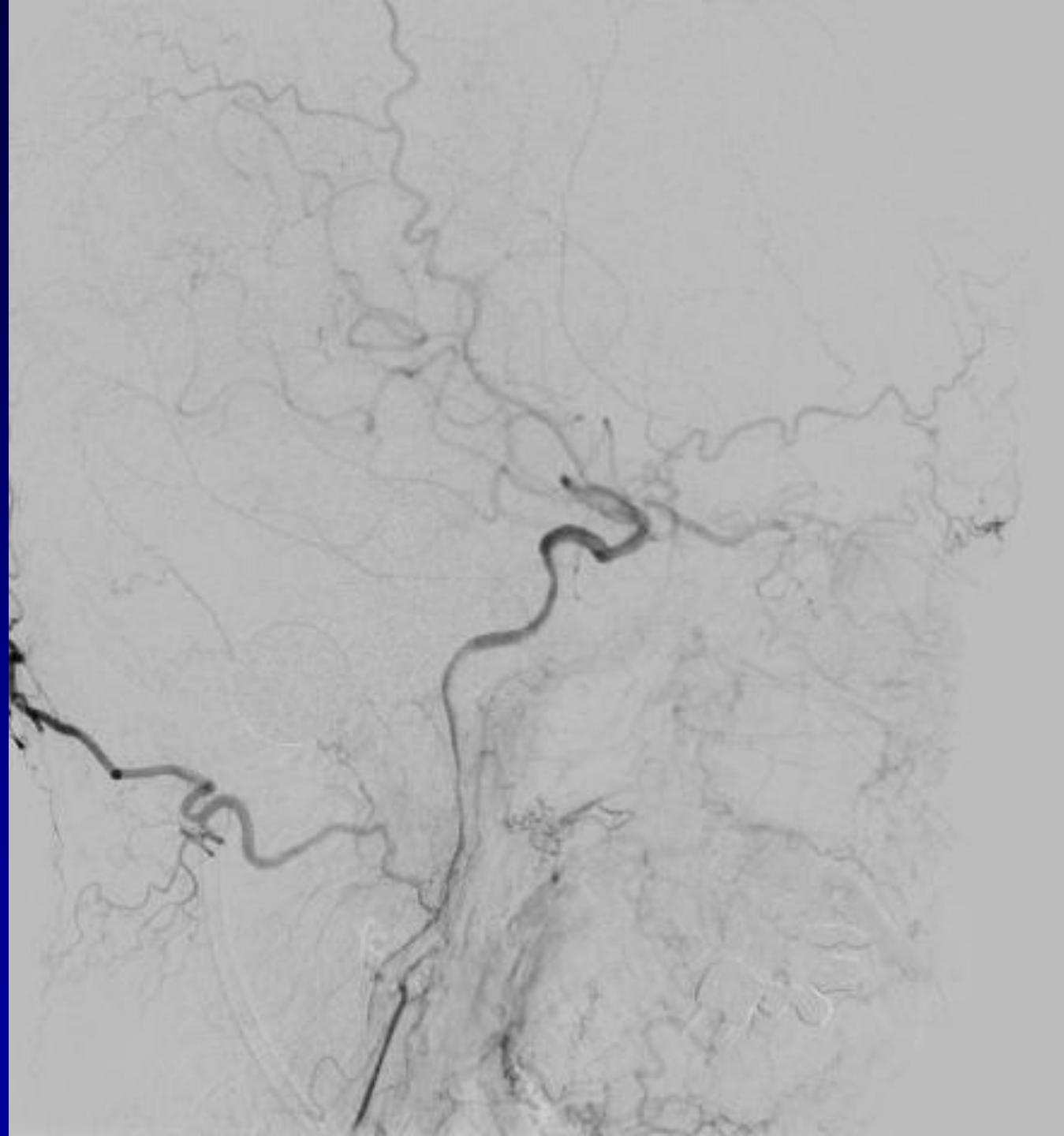


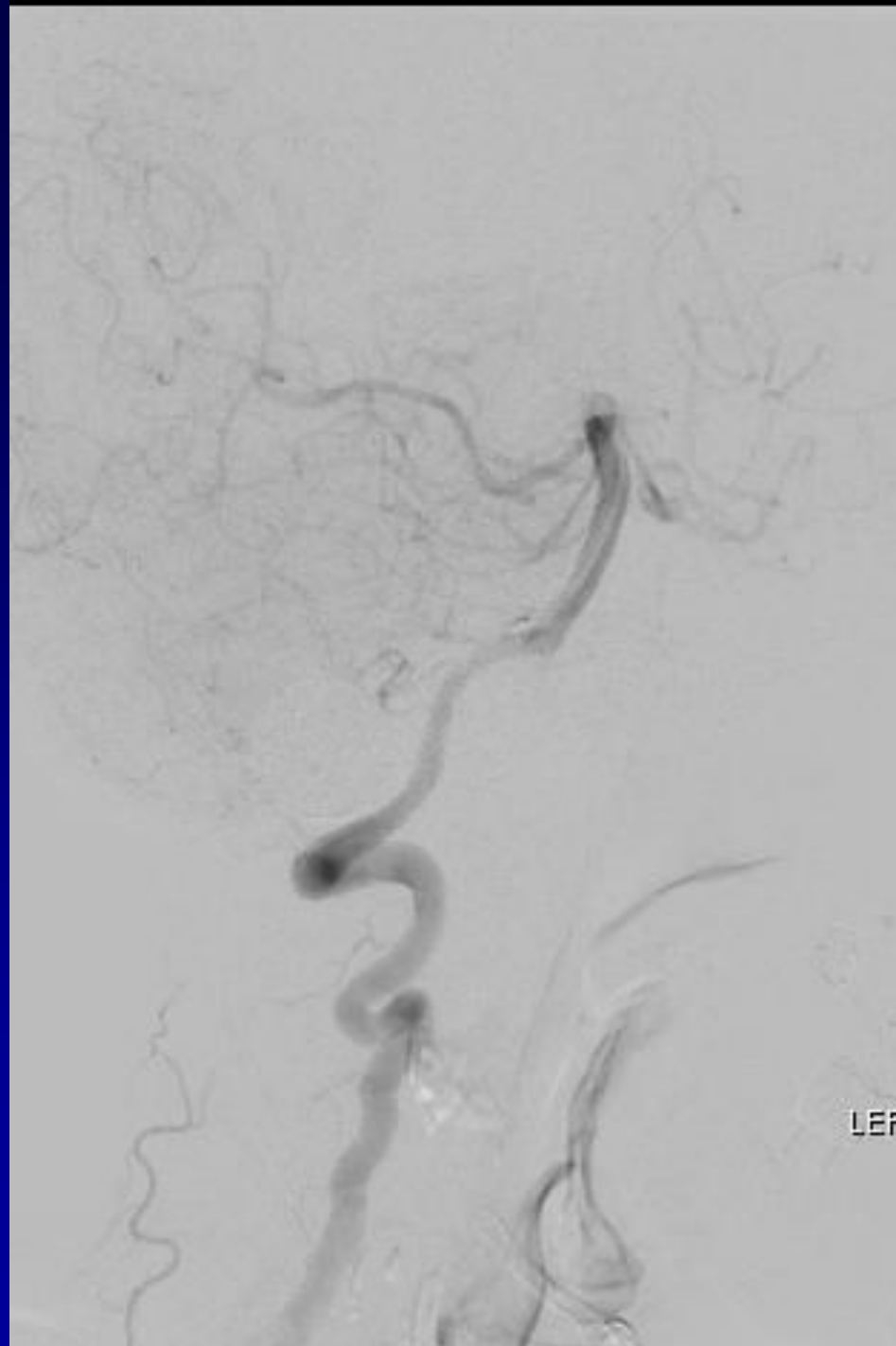
LEFT INTRACRANIAL



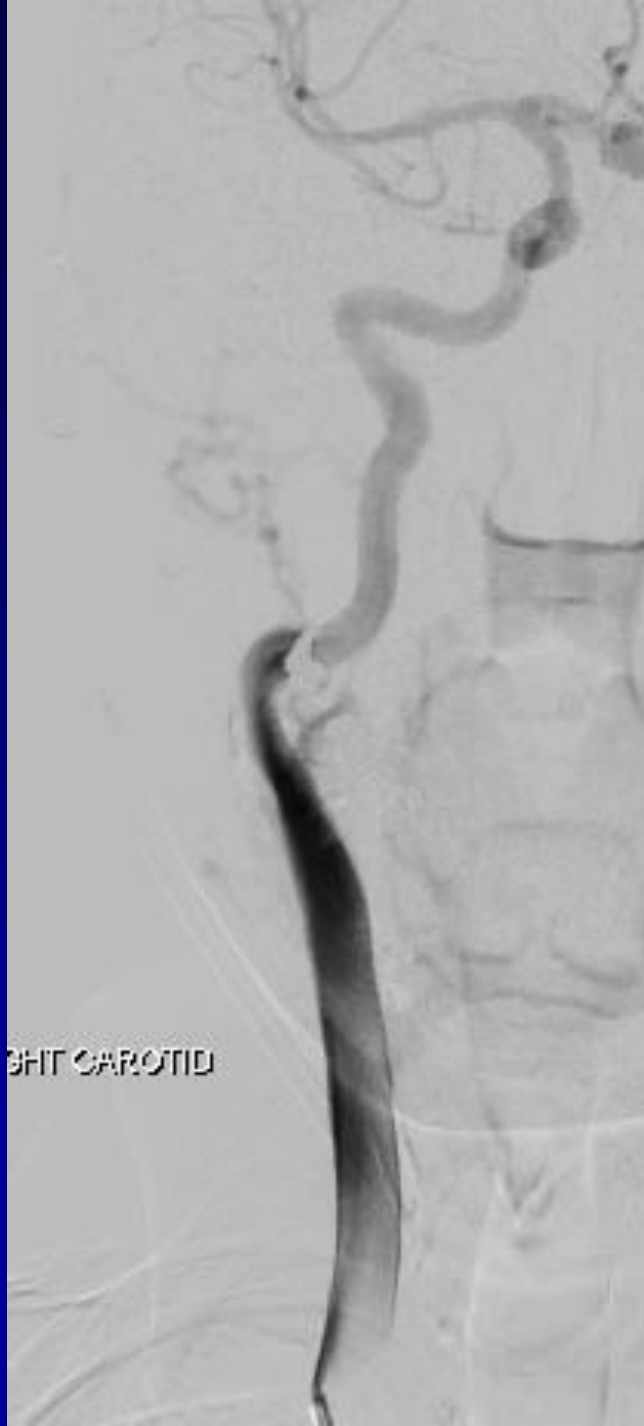
LEFT INTRACRANIAL





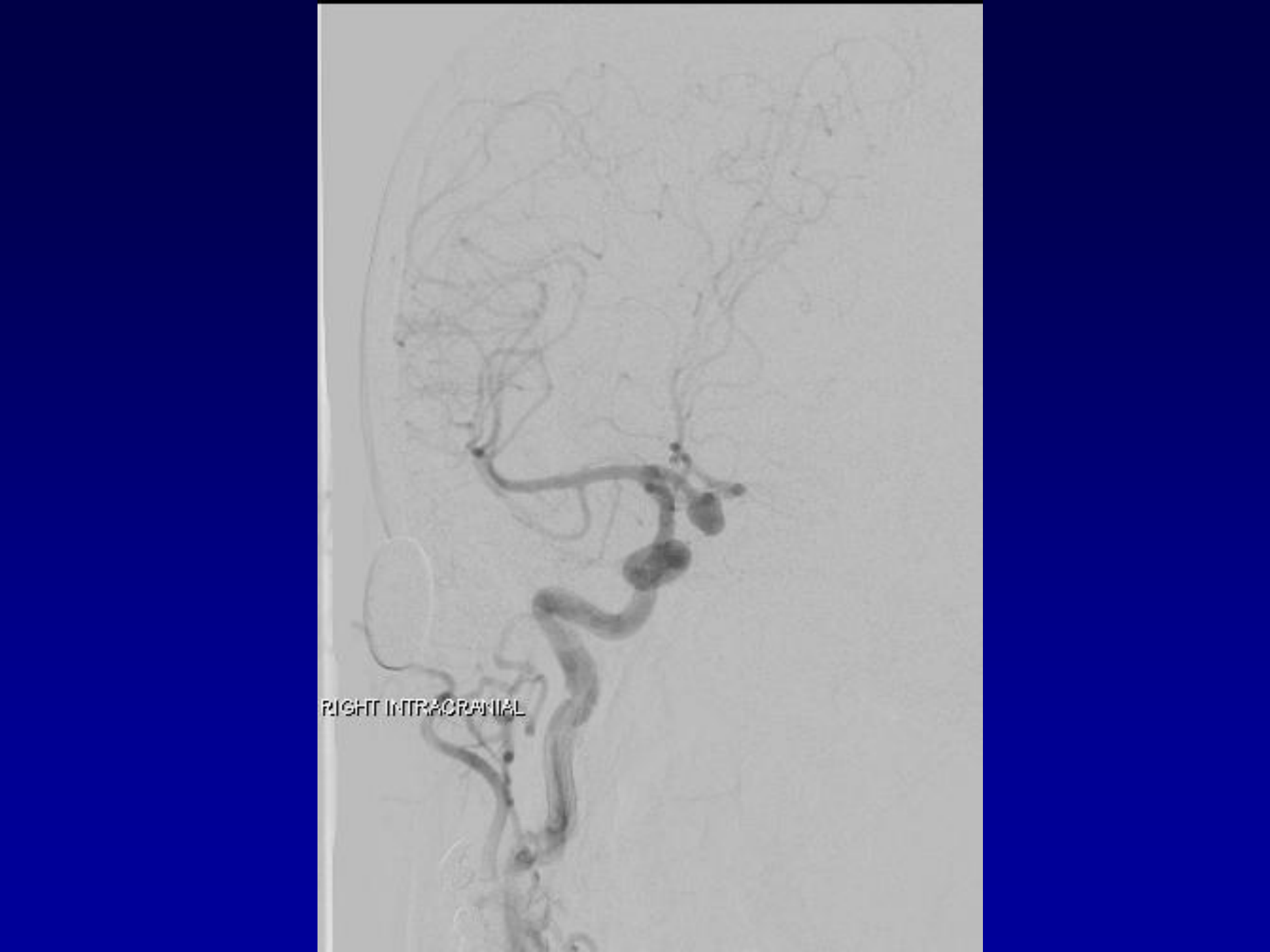


RIGHT CAROTID



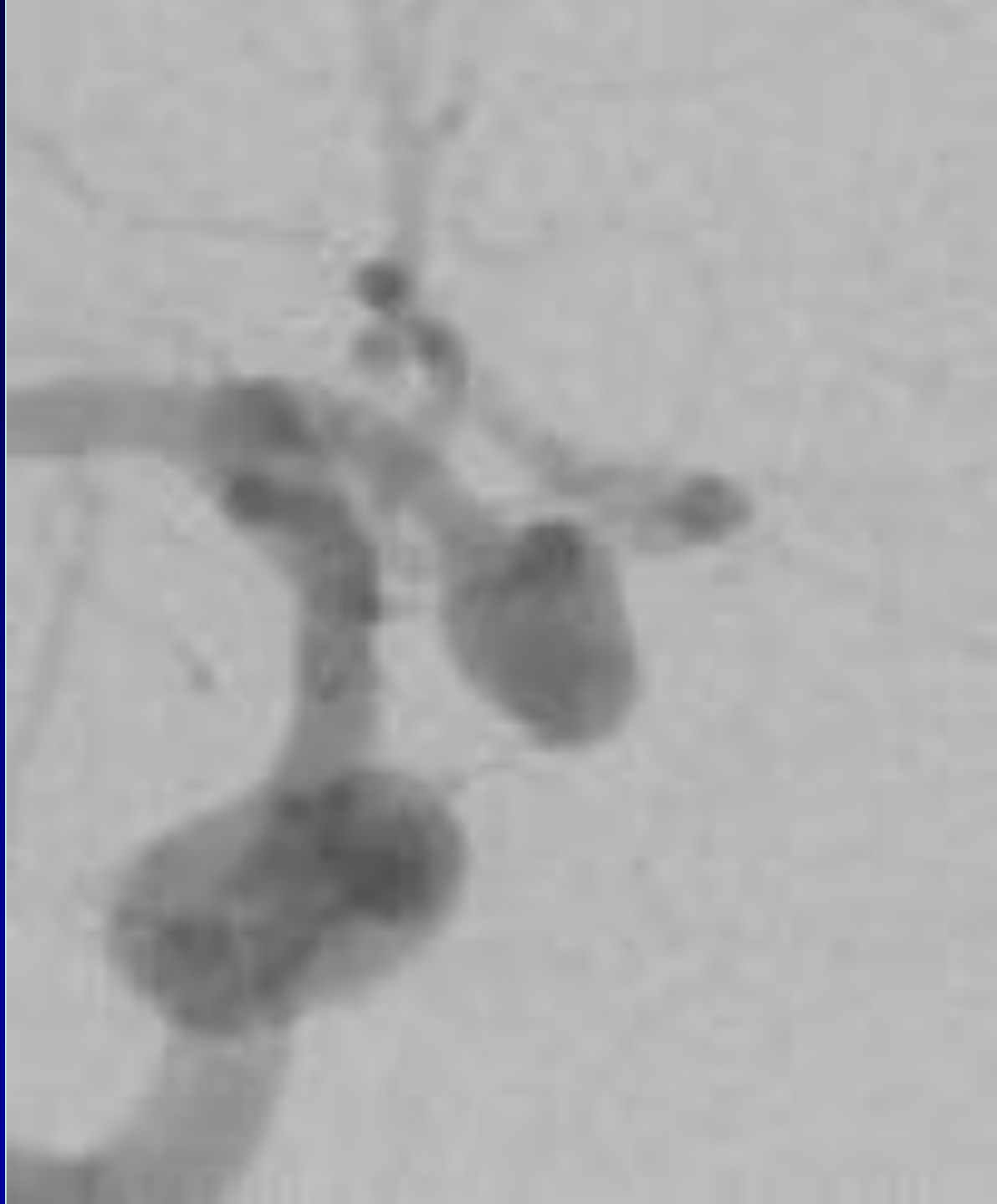


RIGHT INTRACRANIAL



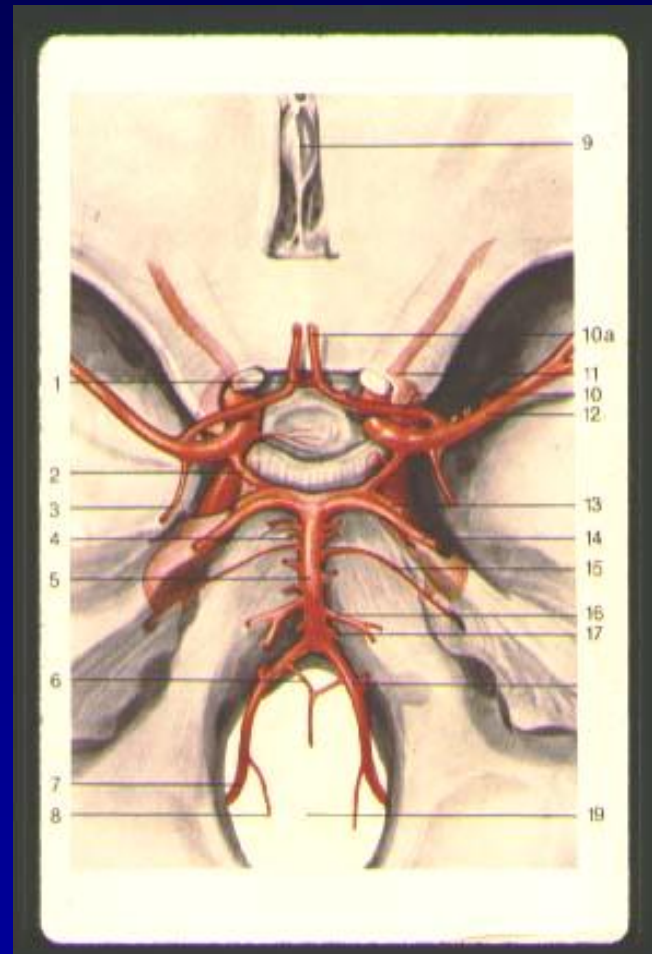
RIGHT INTRACRANIAL

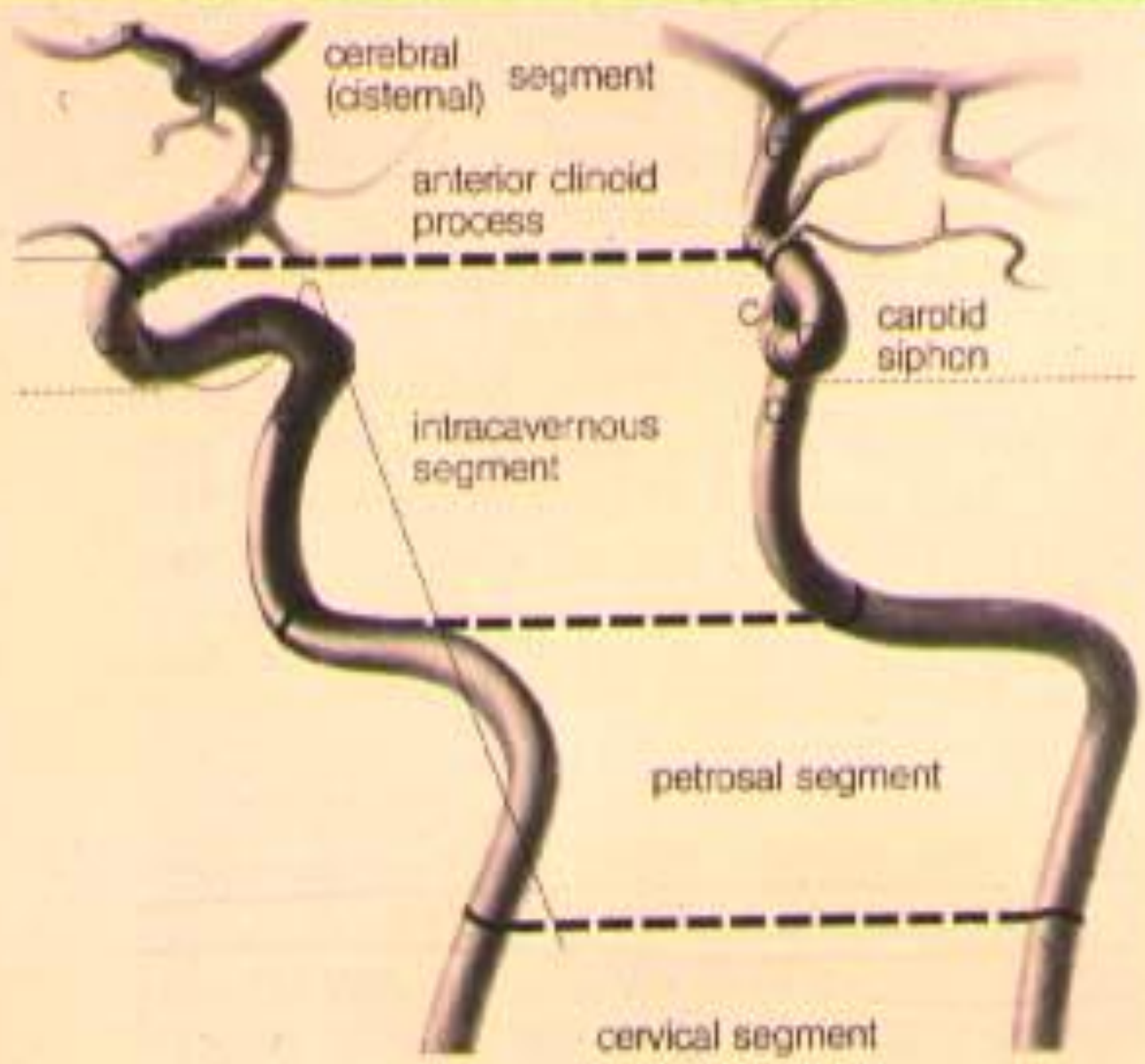
This is a right intra-cranial angiogram, likely a lateral view of the right internal carotid artery. The image shows the arterial system from the neck up to the brain. The internal carotid artery is seen ascending from the bottom, passing through the skull base, and entering the cranium. It then branches into the anterior, middle, and posterior cerebral arteries. The anterior cerebral artery is seen crossing the midline to supply the contralateral side. The middle cerebral artery is the largest branch and supplies the lateral surface of the brain. The posterior cerebral artery is seen arising from the basilar artery. The image shows a normal distribution of the arterial system with no obvious stenosis or aneurysms. There are some faint white circles on the image, possibly indicating areas of interest or artifacts.

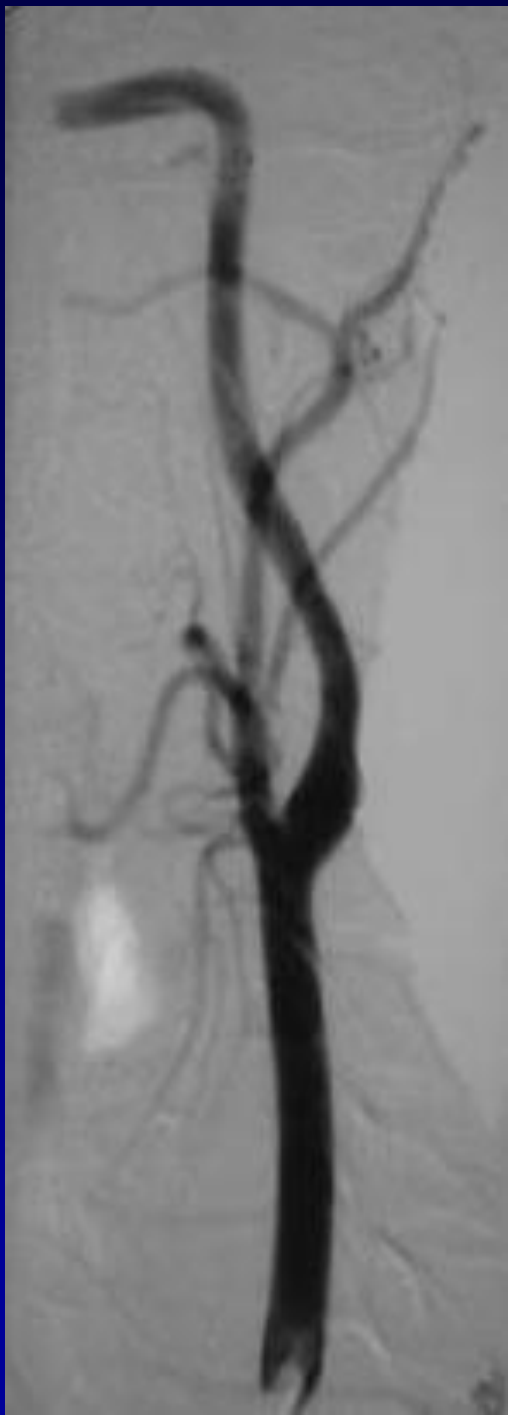


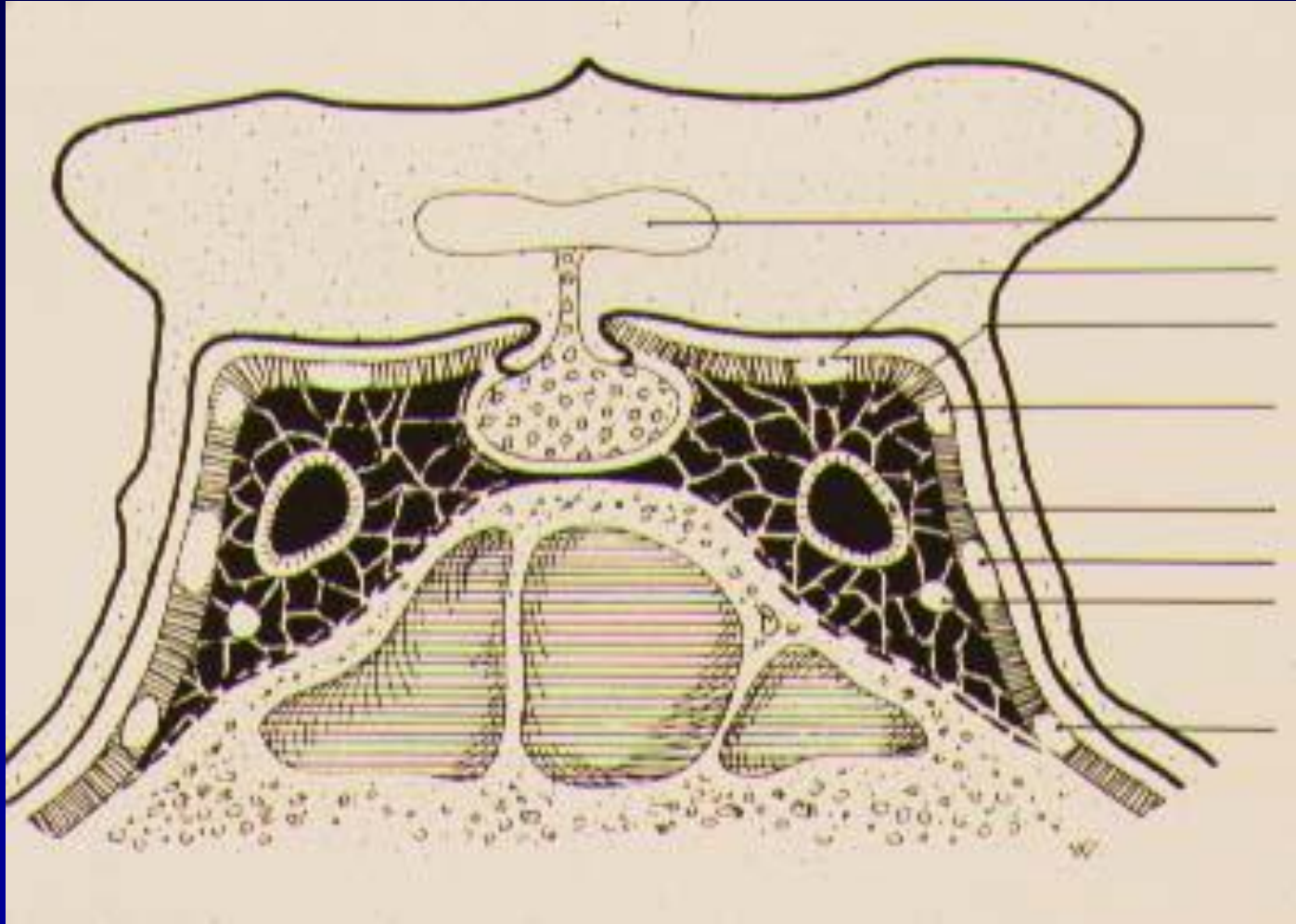
Circle of Willis

- 4 vessels that feed brain
- 2 carotids
- 2 vertebrals
- Usually incomplete circle

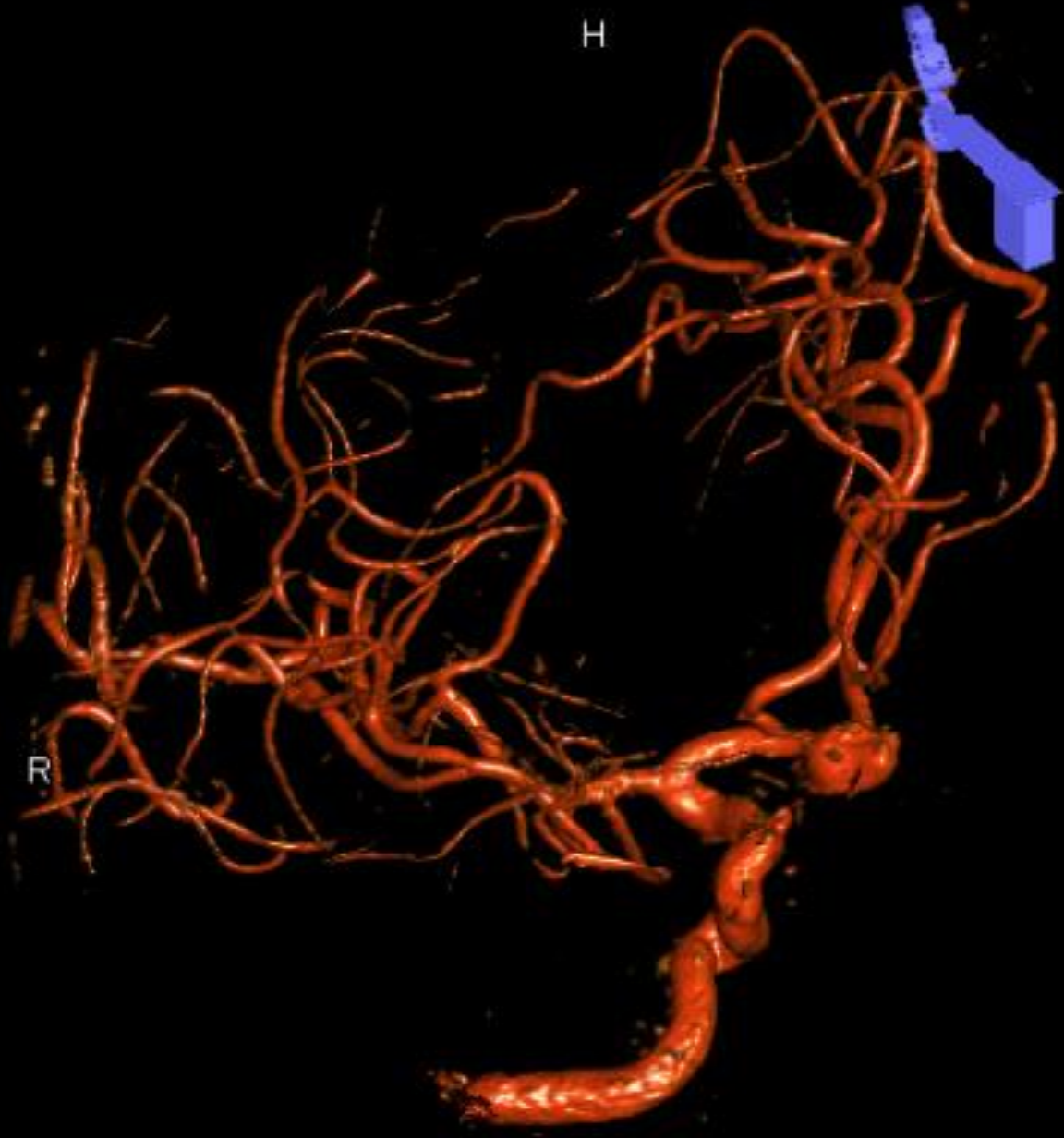






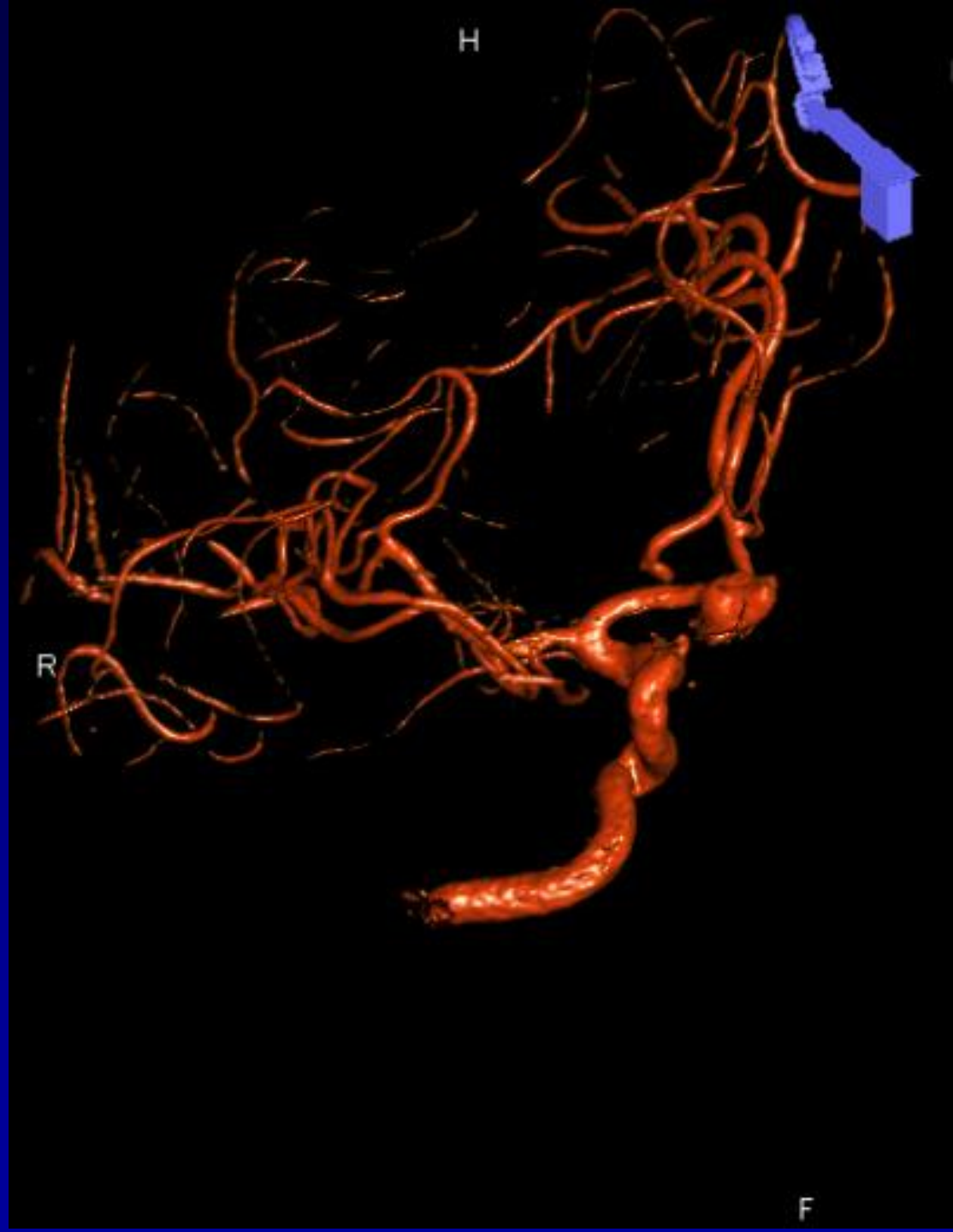






H

R



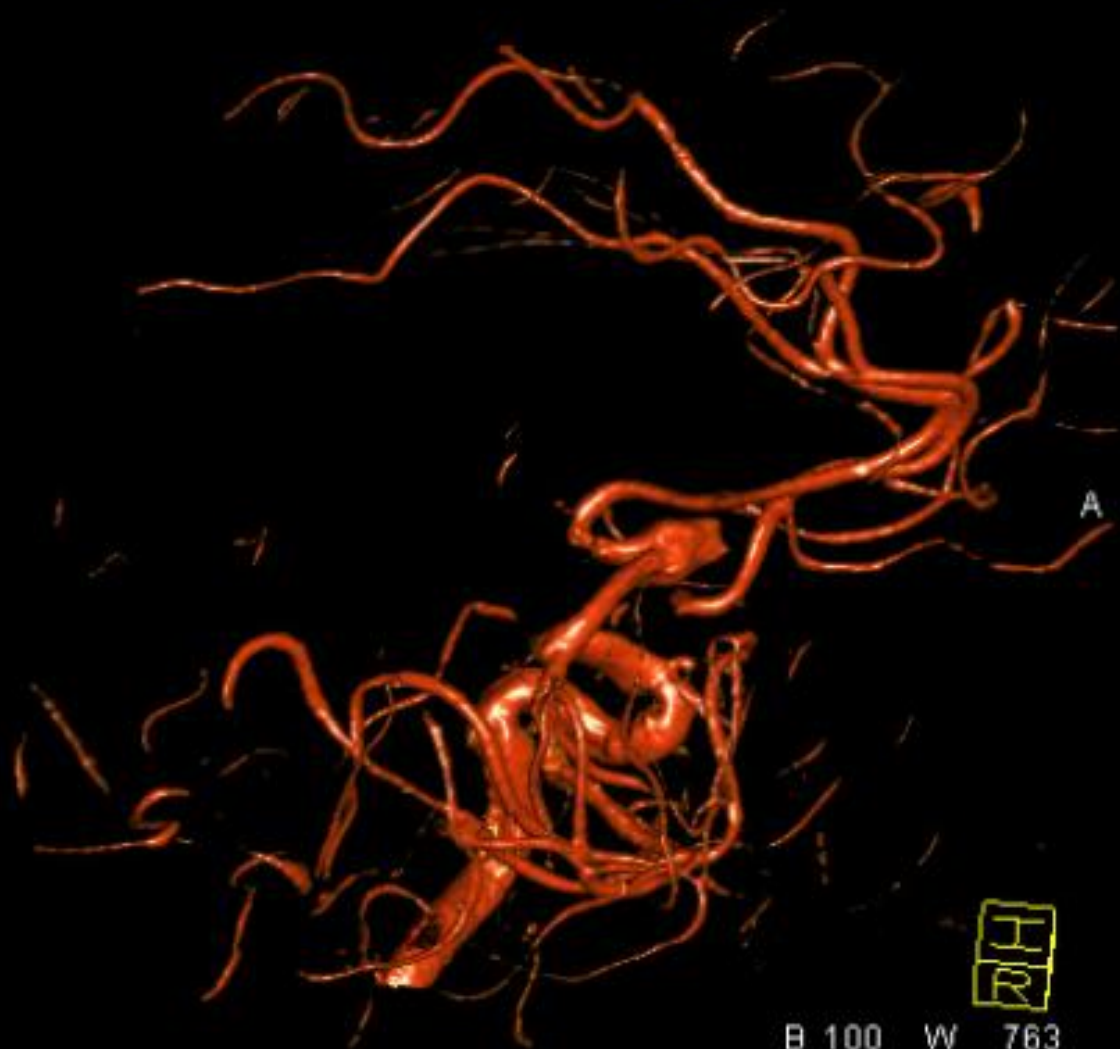
L



RES/SHADE/SURF

LAO/RAO -88

CRAN/CAUD 55



A



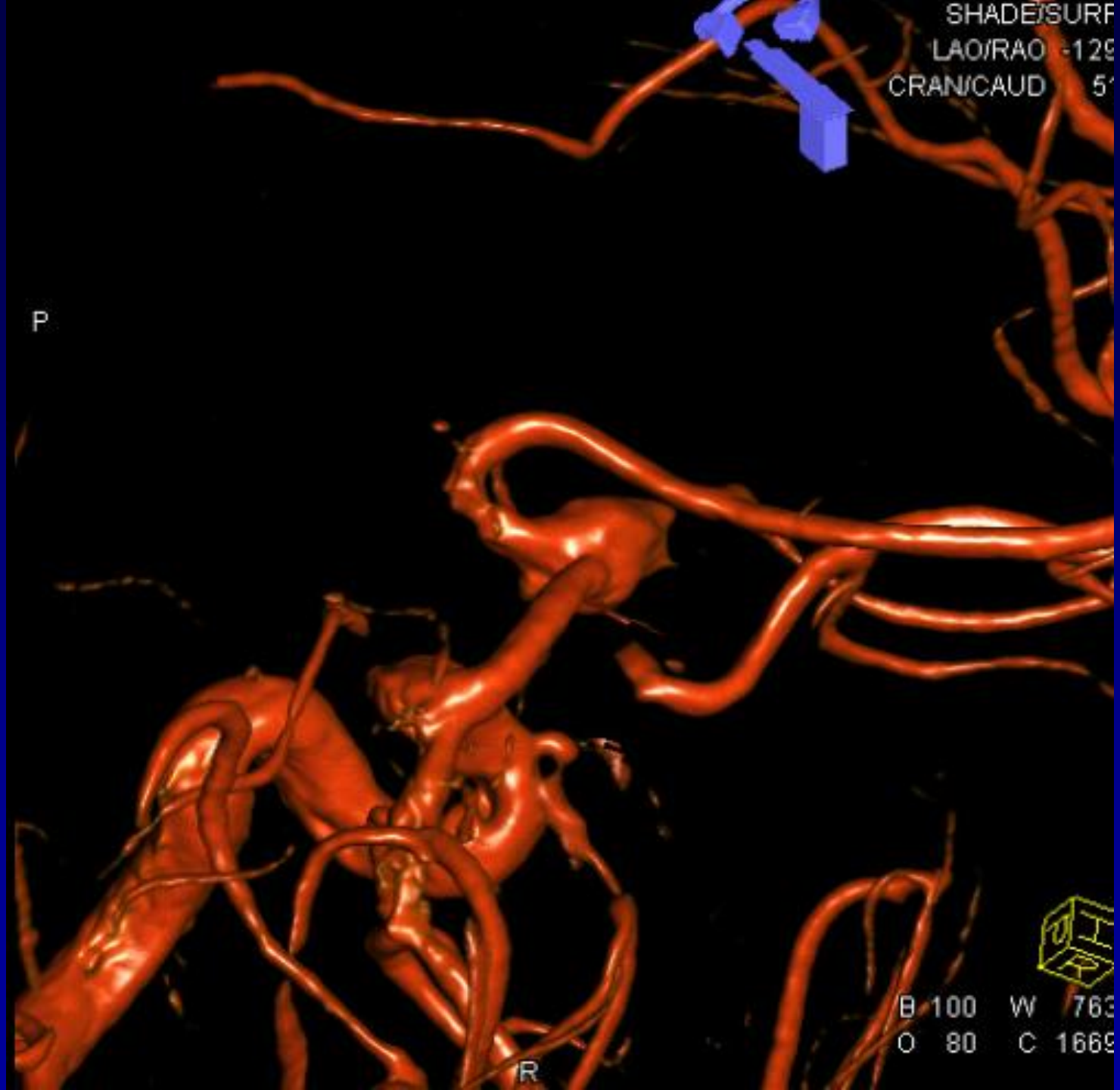
B 100 W 763

O 80 C 1669

D

SHADE/SURF
LAO/RAO -125
CRAN/CAUD 51

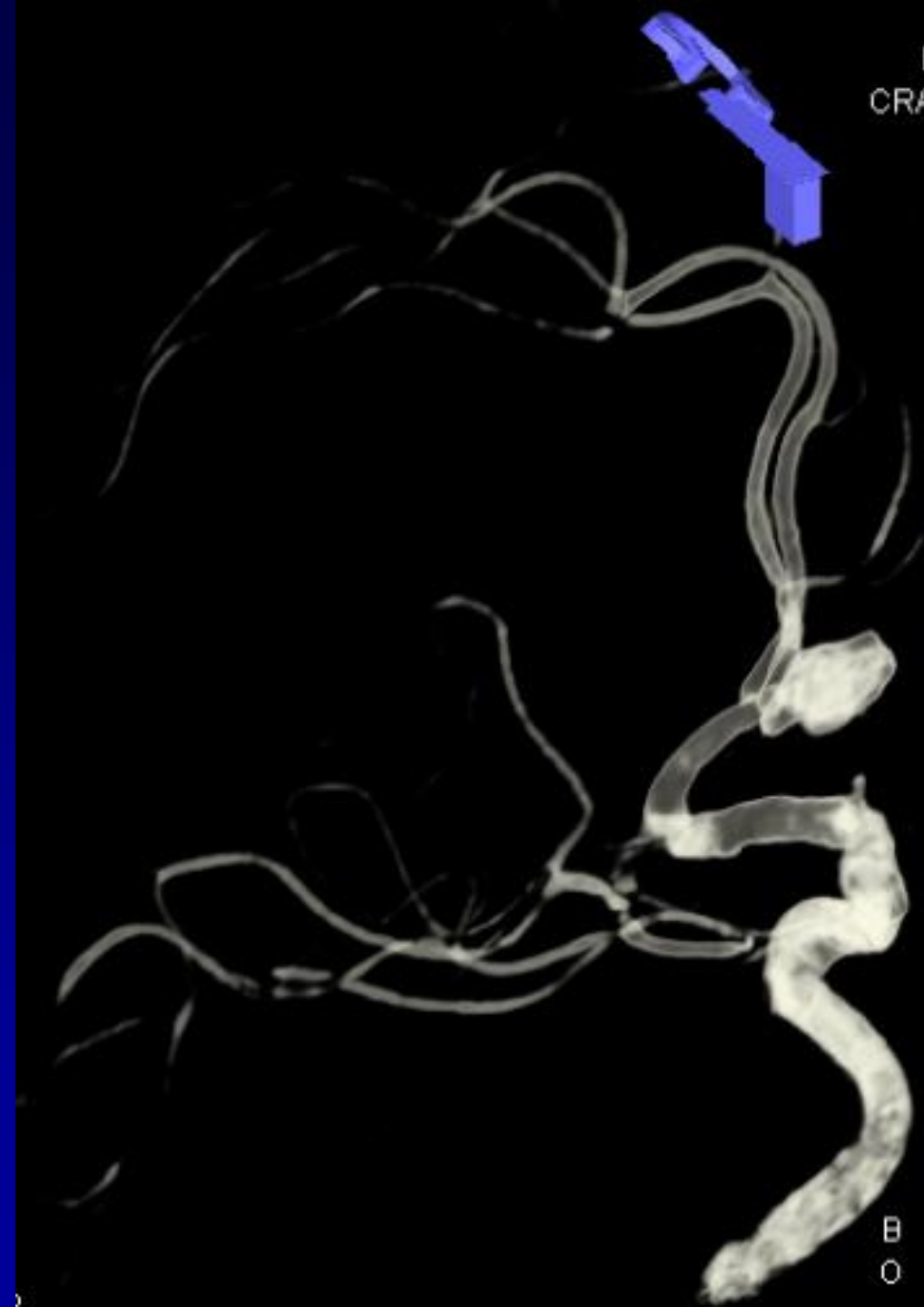
P



B 100 W 763
O 80 C 1669

R

L
LAO/RAO -45
CRAN/CAUD 3



B 30 W 5000 F
O 35 C 5000

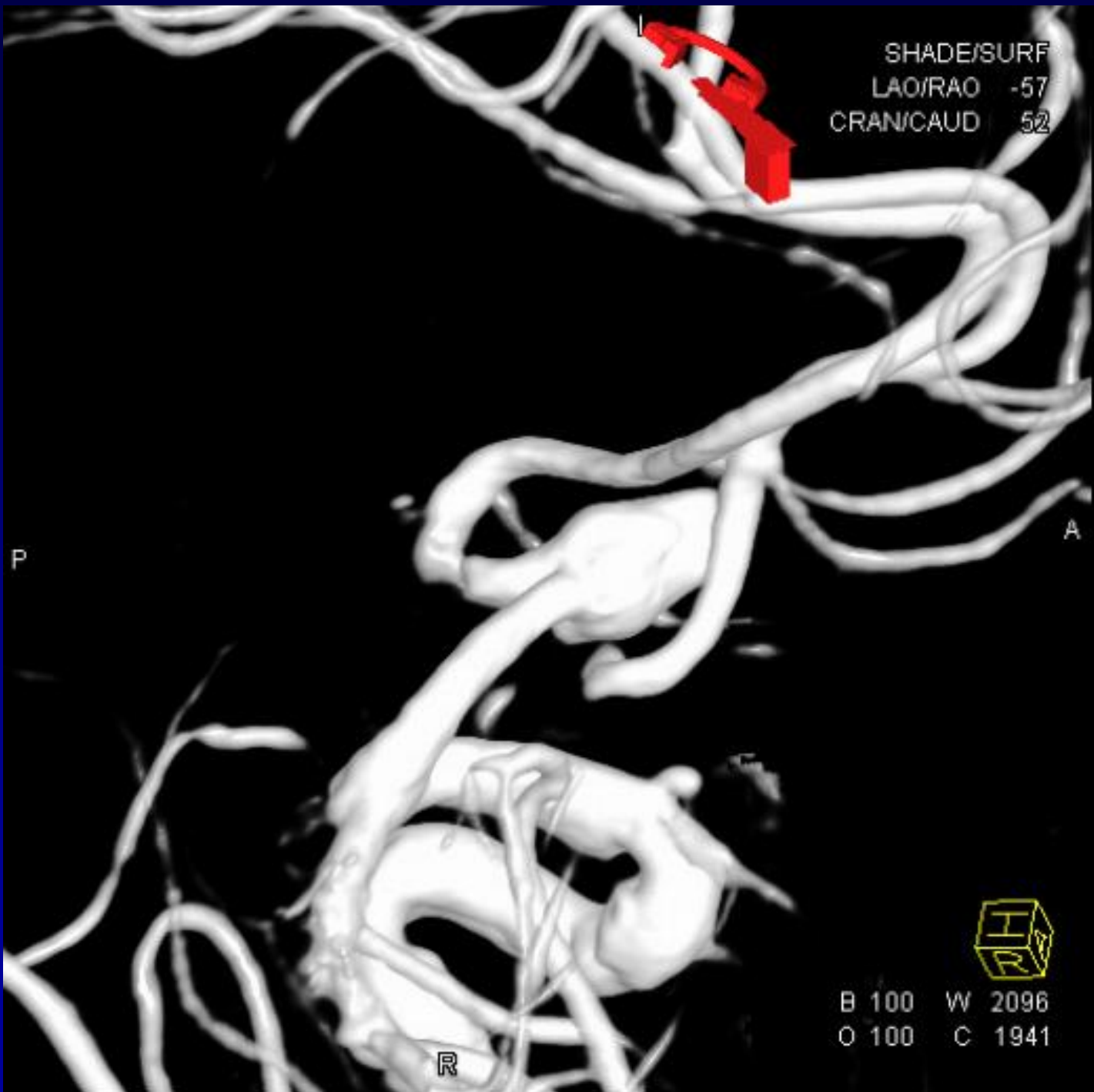
L
LAO/RAO -45
CRAN/CAUD 3

8.81mm

RIA

B 30 W 5000 F
O 35 C 5000

D



SHADE/SURF
LAO/RAO -57
CRAN/CAUD 52

P

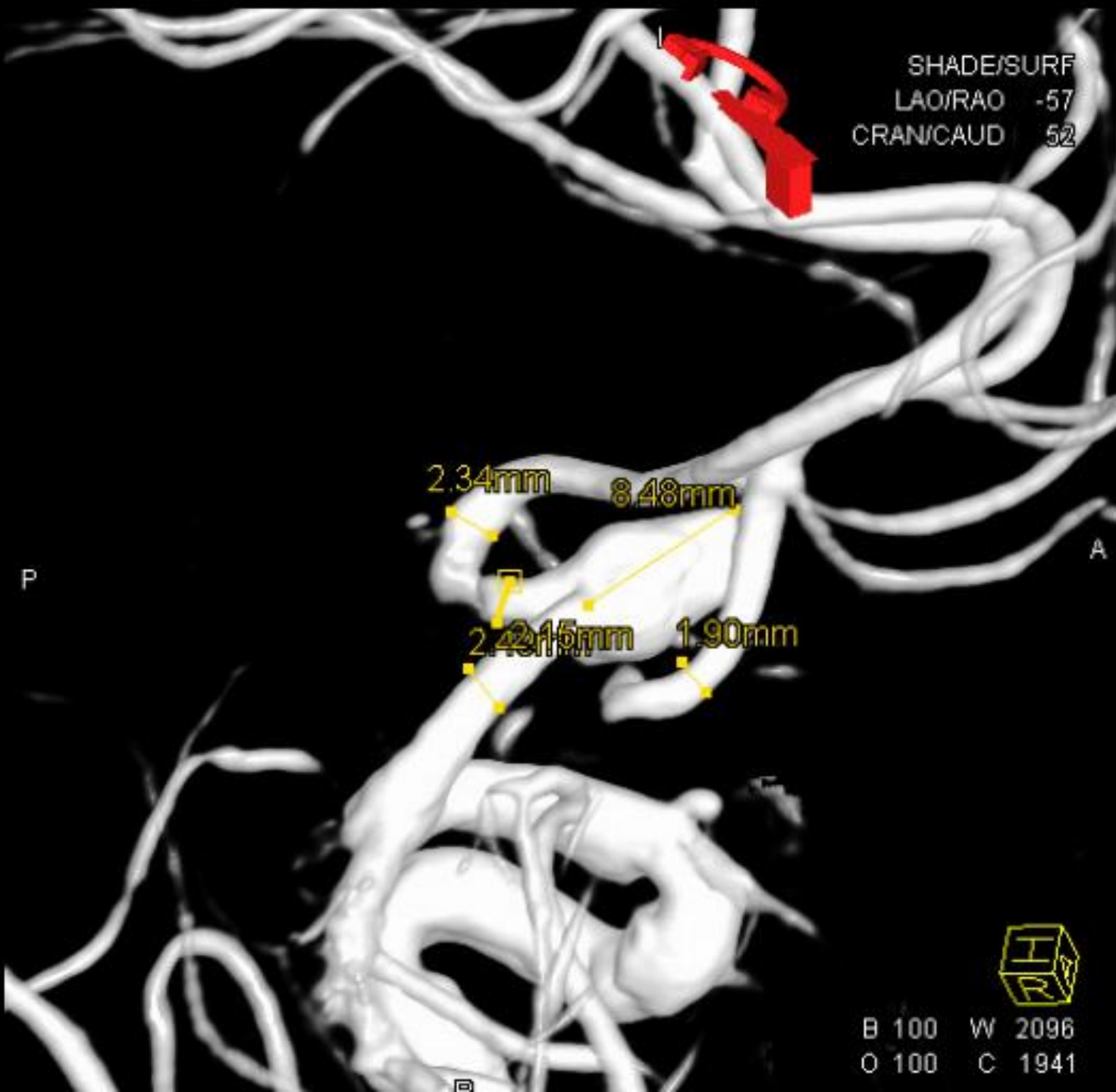
A

R



B 100 W 2096
O 100 C 1941

SHADE/SURF
LAO/RAO -57
CRAN/CAUD 52



B 100 W 2096
O 100 C 1941