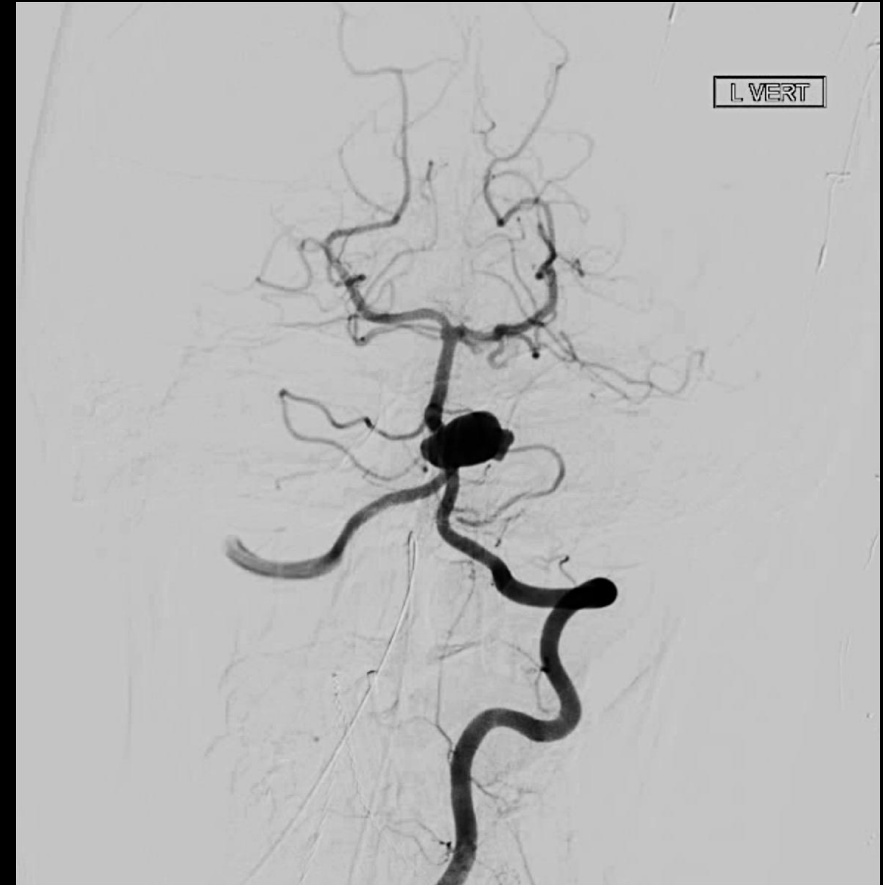


**Double Microcatheter & Staged Stent  
Assisted Embolization of a Complex Basilar  
Fenestration Aneurysm.**

**Satoshi Tateshima, MD, DMSc  
Associate Professor  
UCLA Interventional Neuroradiology**

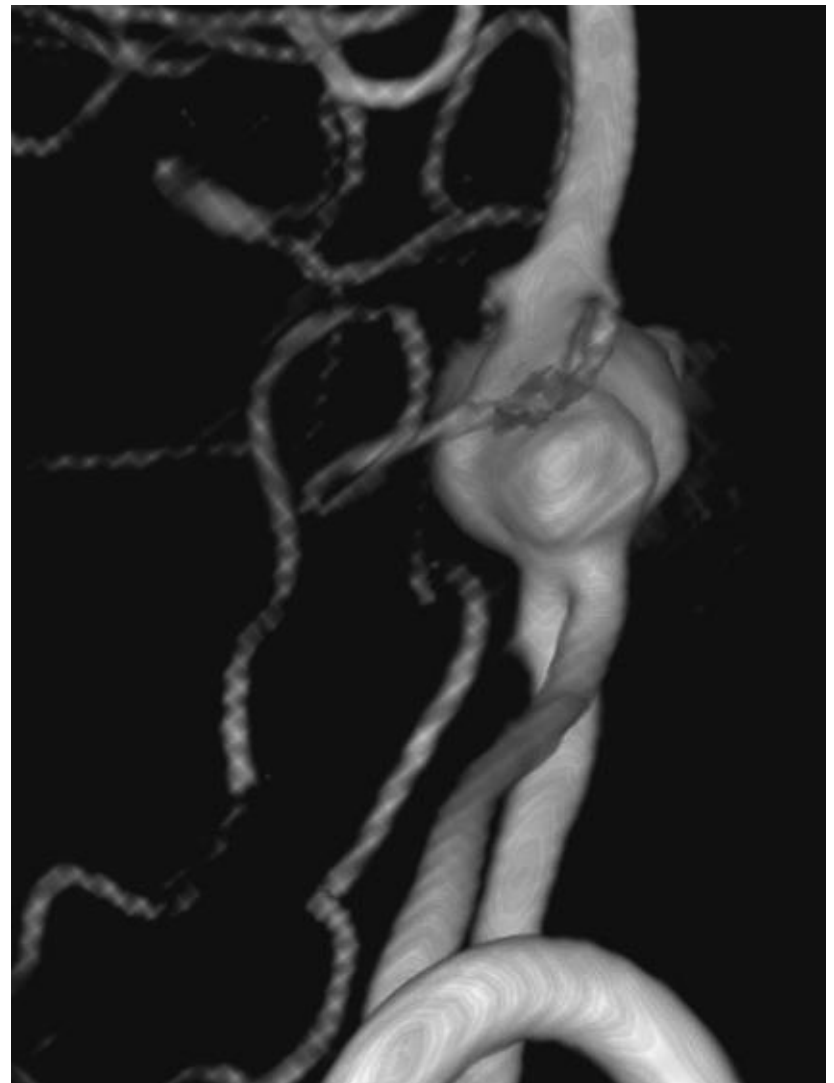
Mid 20s female patient presented with HH Gr3 SAH from a large basilar fenestration aneurysm. She has history of drug abuse.



# Pre-TX Angiograms1

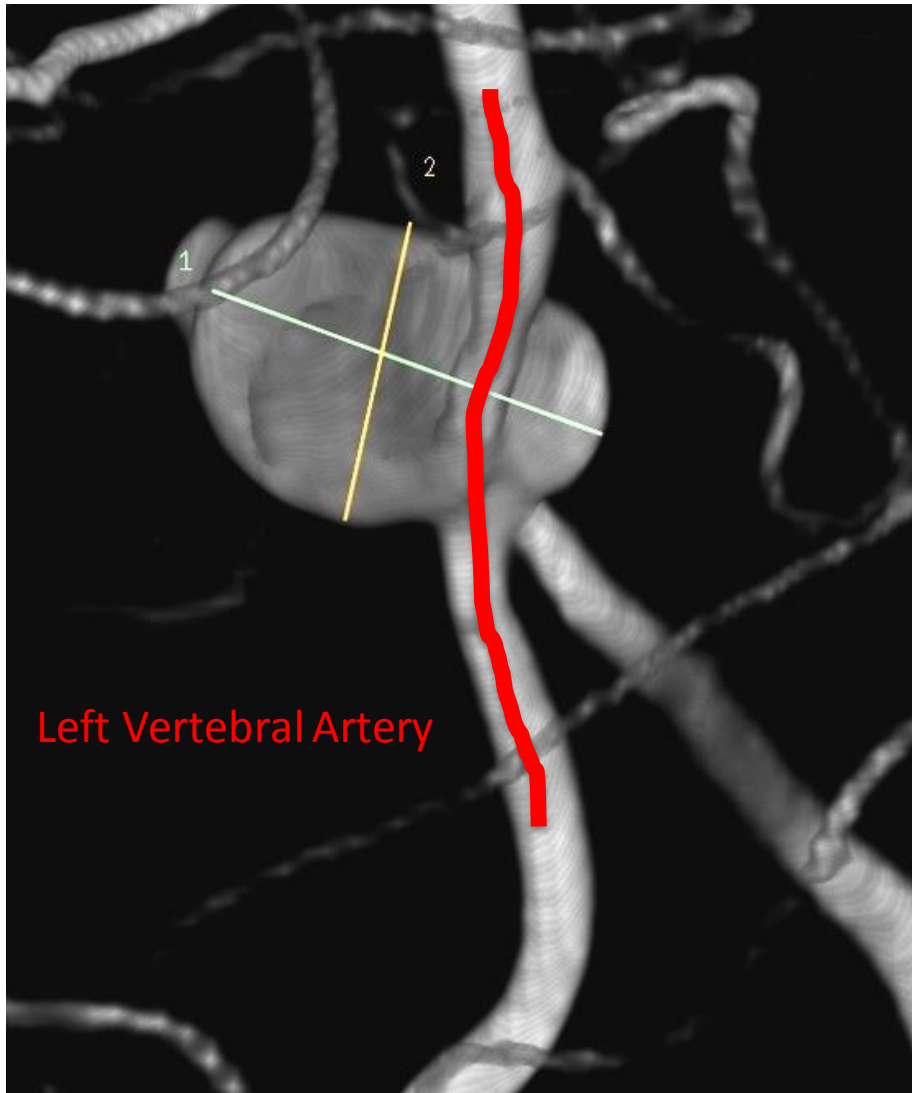


AP

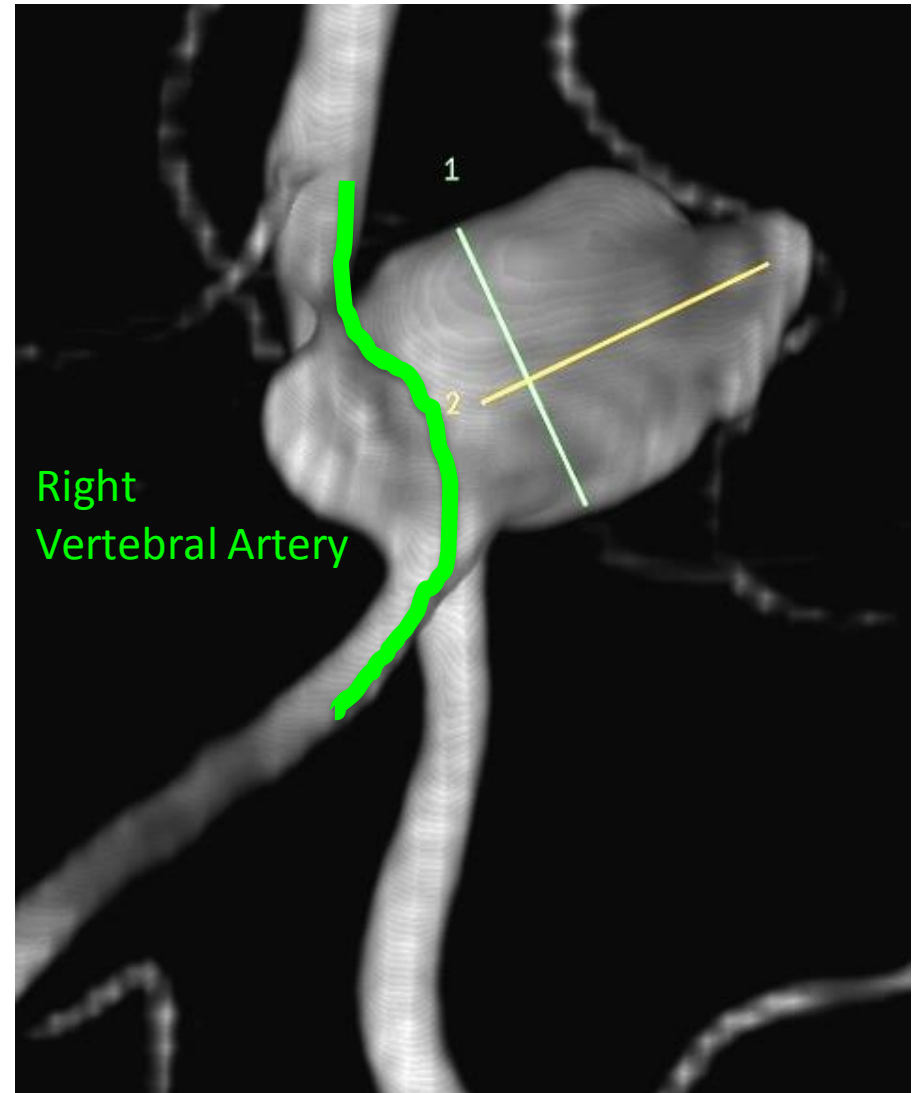


Lateral R-L

# Pre-TX Angiograms2



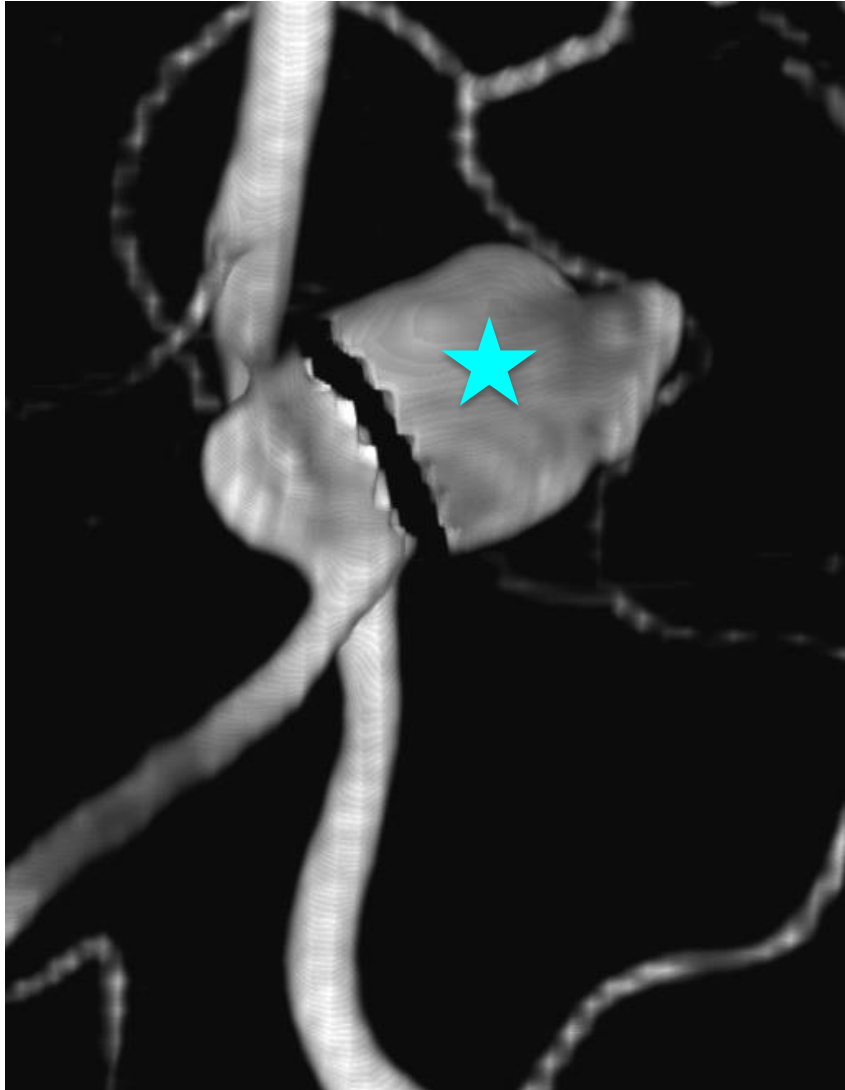
PA View



AP View

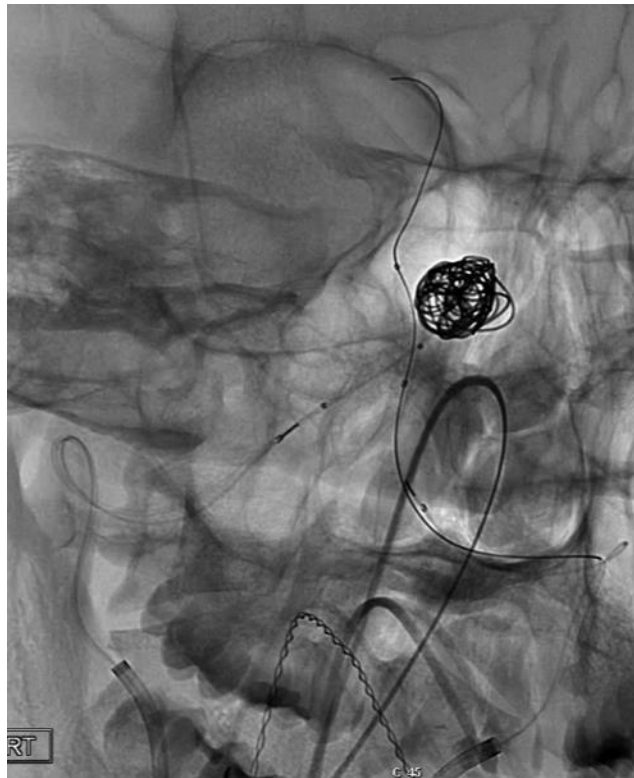
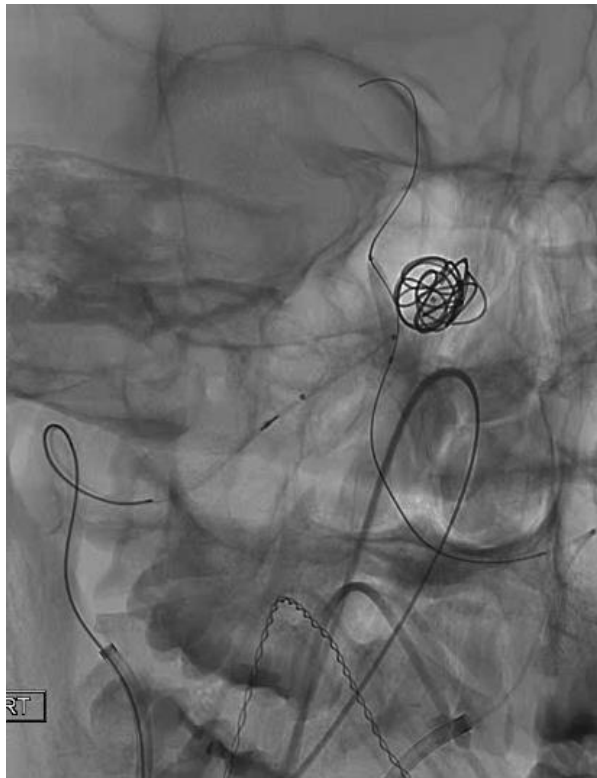
**Day1**

**Double MC / Balloon Assisted Aneurysm Embolization**



# Day1

## Double MC / Balloon Assisted Aneurysm Embolization



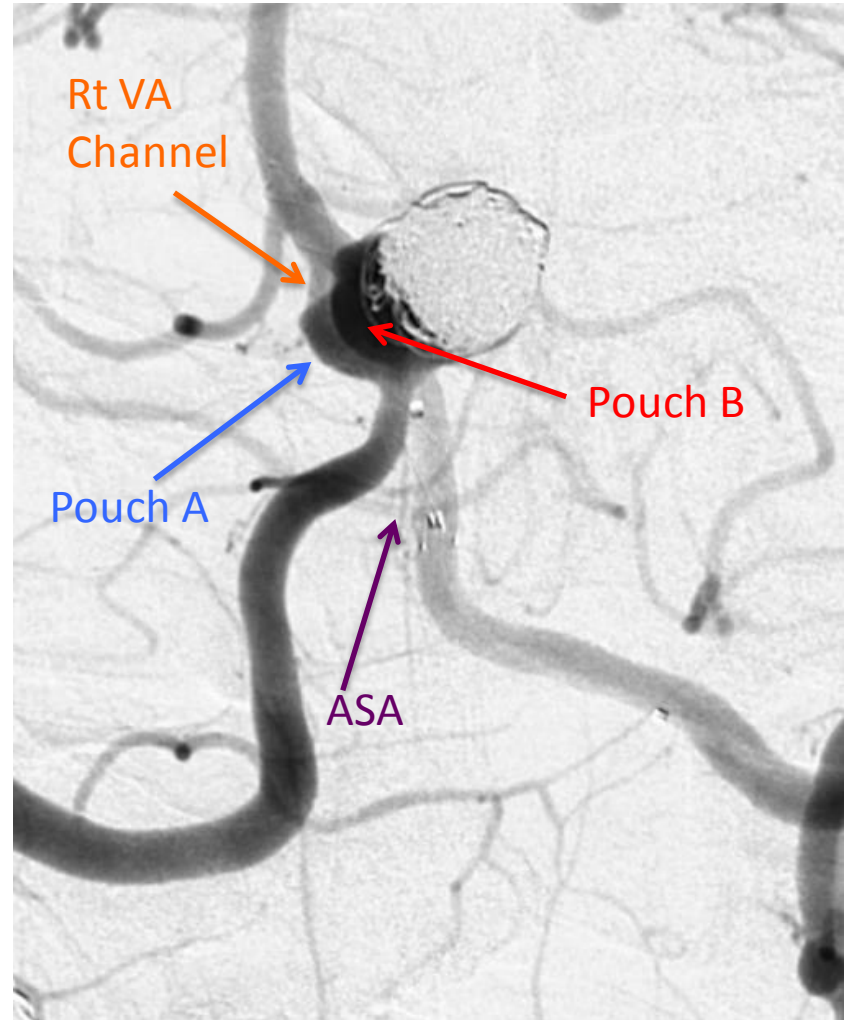
# Day7-10

## IA Verapamil Tx for Vasospasm



# Day 29

## Stent Assisted Embo & Rt VA PAO

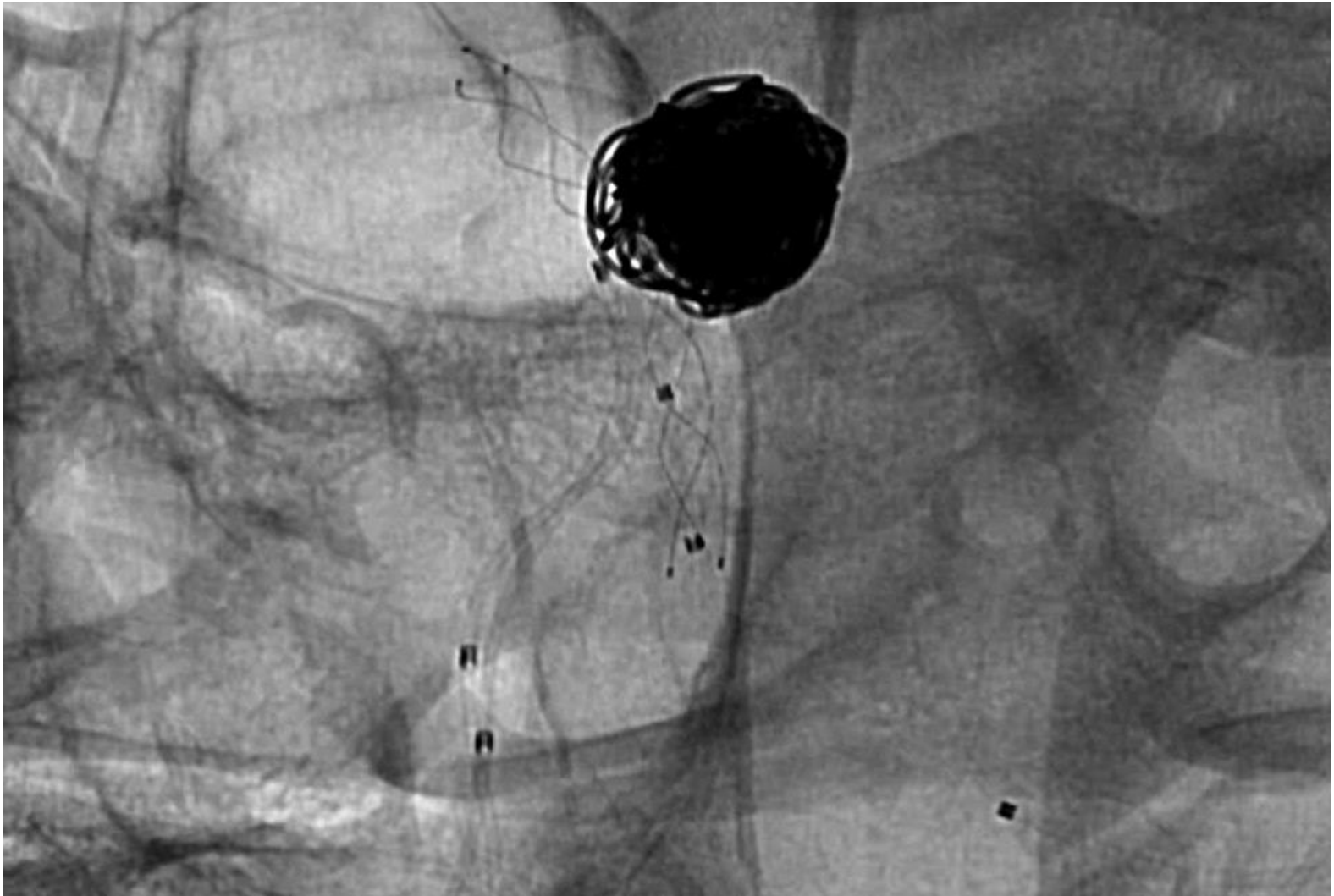


LVIS Jr from BA to Lt VA



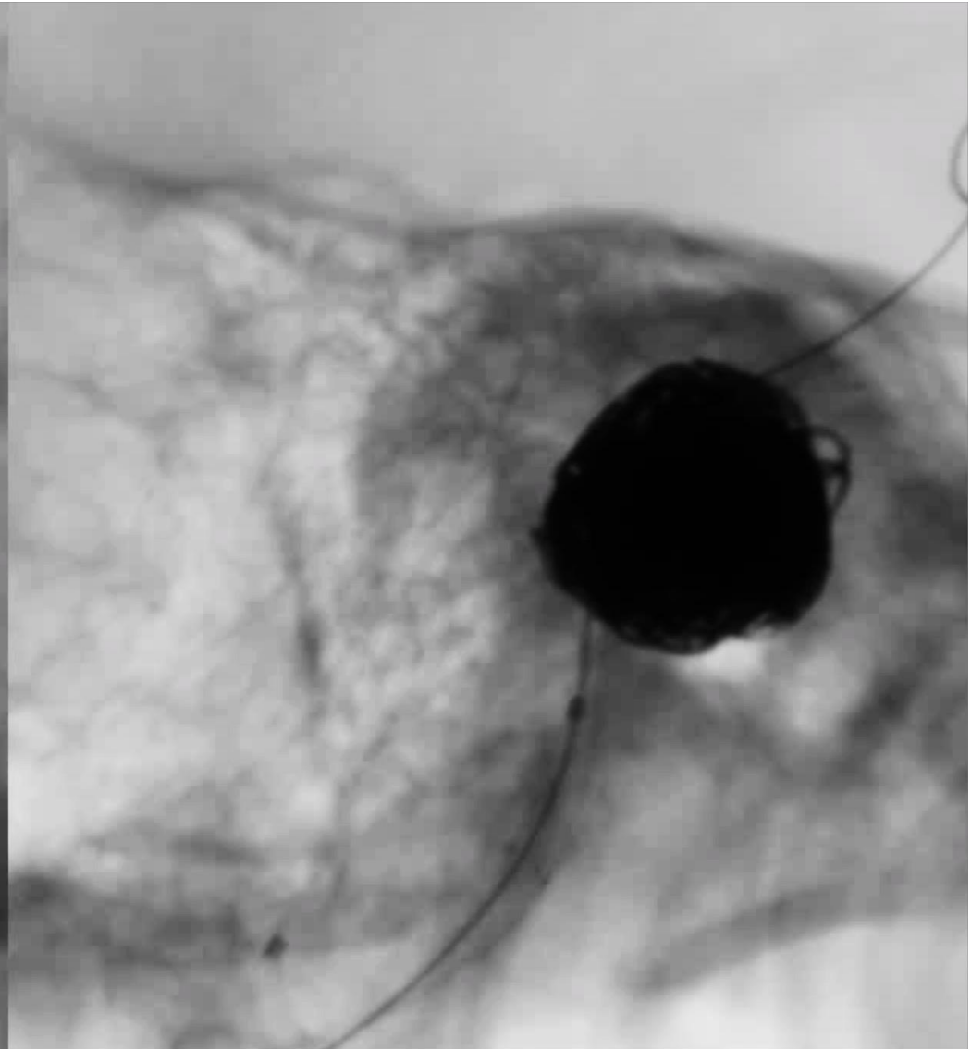
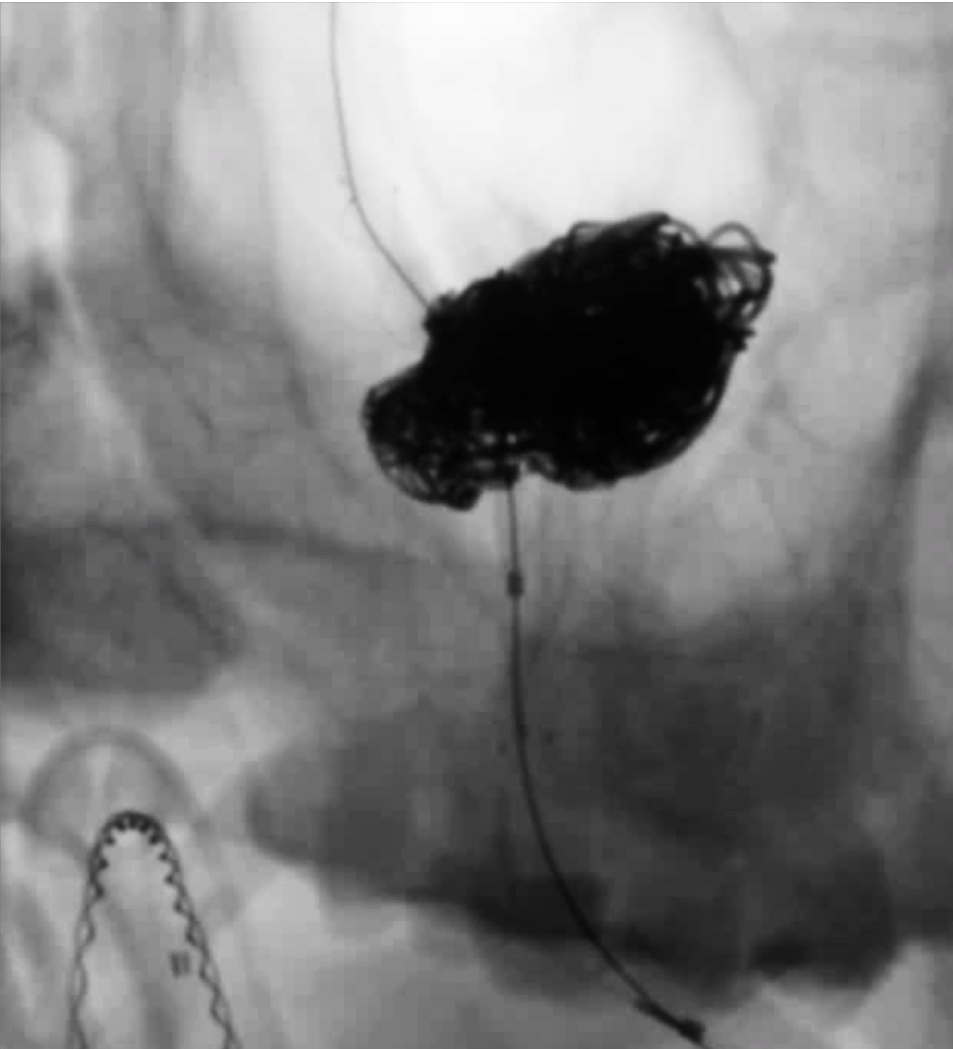
# Day 29

## Stent Assisted Embo & Rt VA PAO



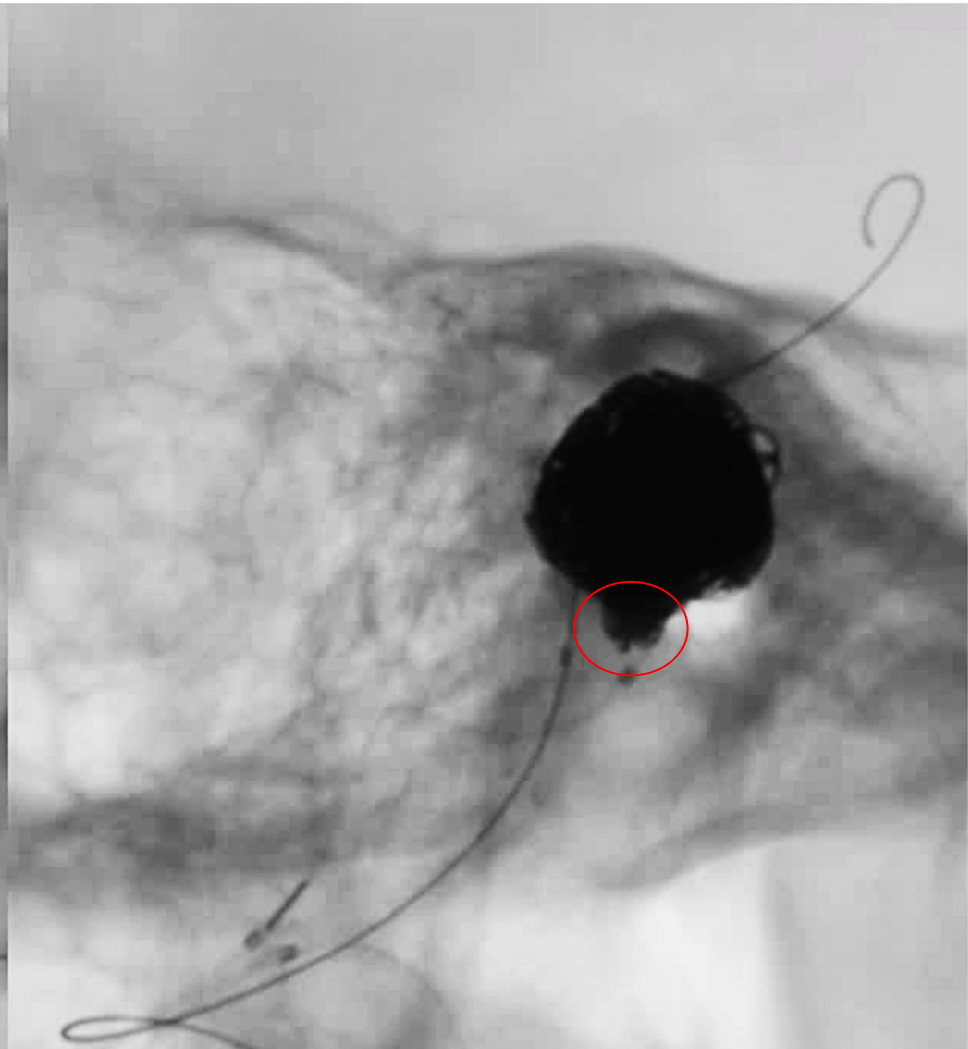
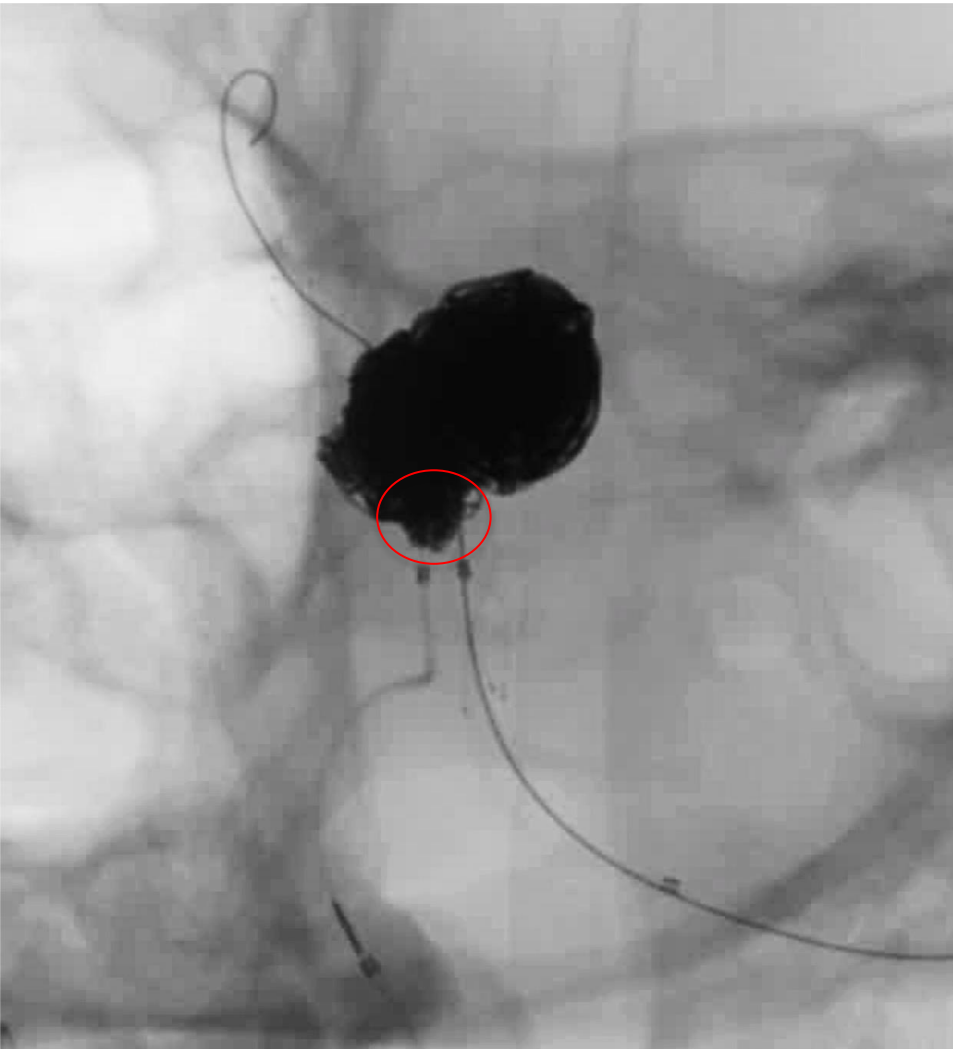
Put catheters into the pouches A & B

**Day 29**  
**Stent Assisted Embo & Rt VA PAO**



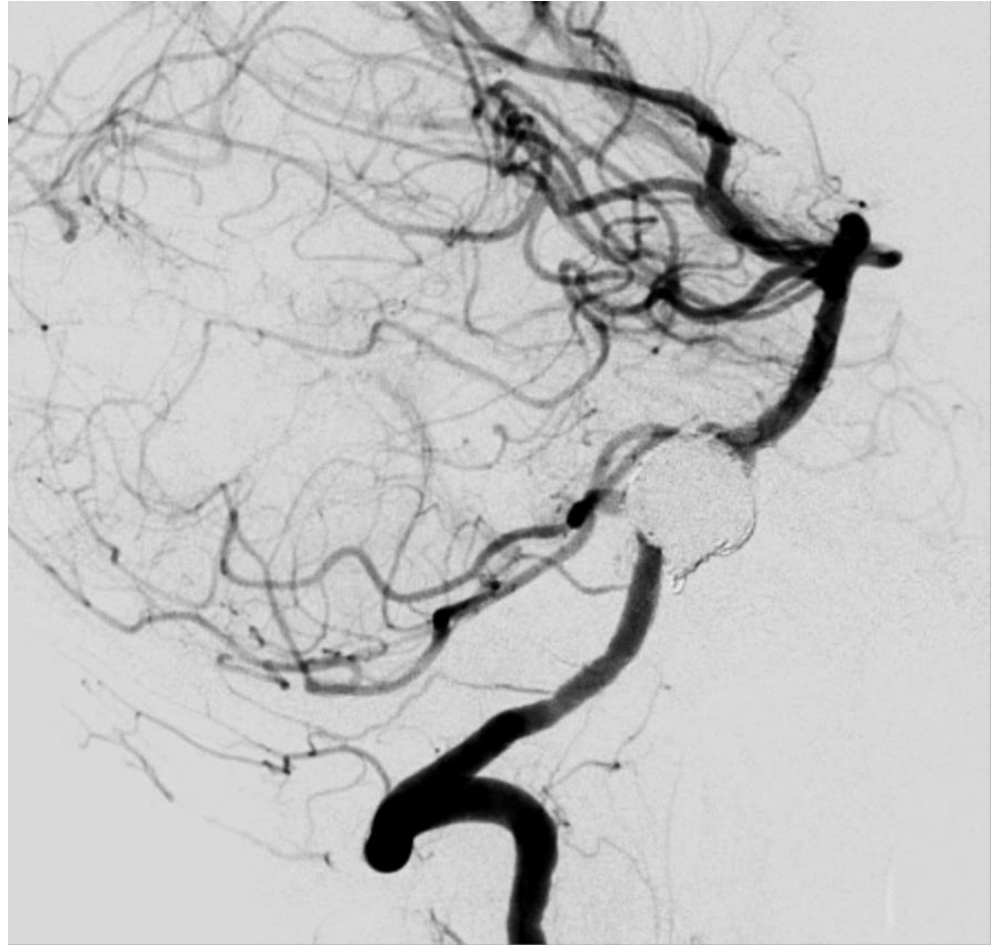
Finished pouch B embo, now filling the pouch A

**Day 29**  
**Stent Assisted Embo & Rt VA PAO**



Rt VA PAO

**Day 29**  
**Stent Assisted Embo & Rt VA PAO**



Final Angiogram

# 6 month f/u angiogram

