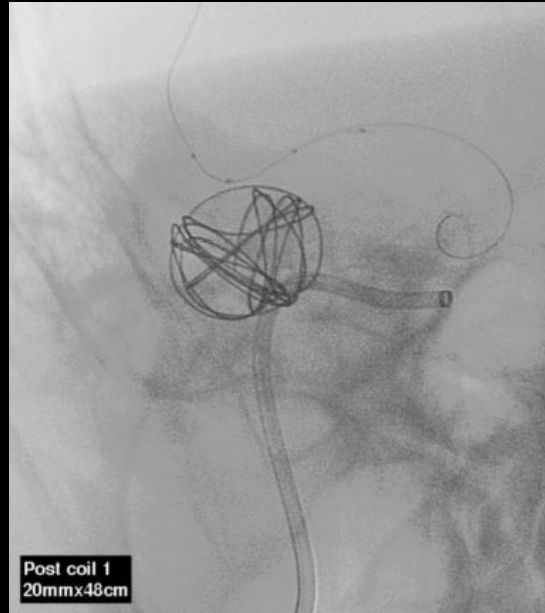
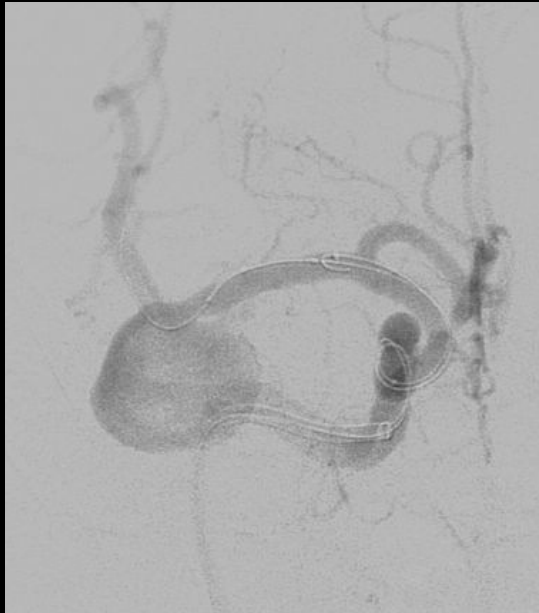


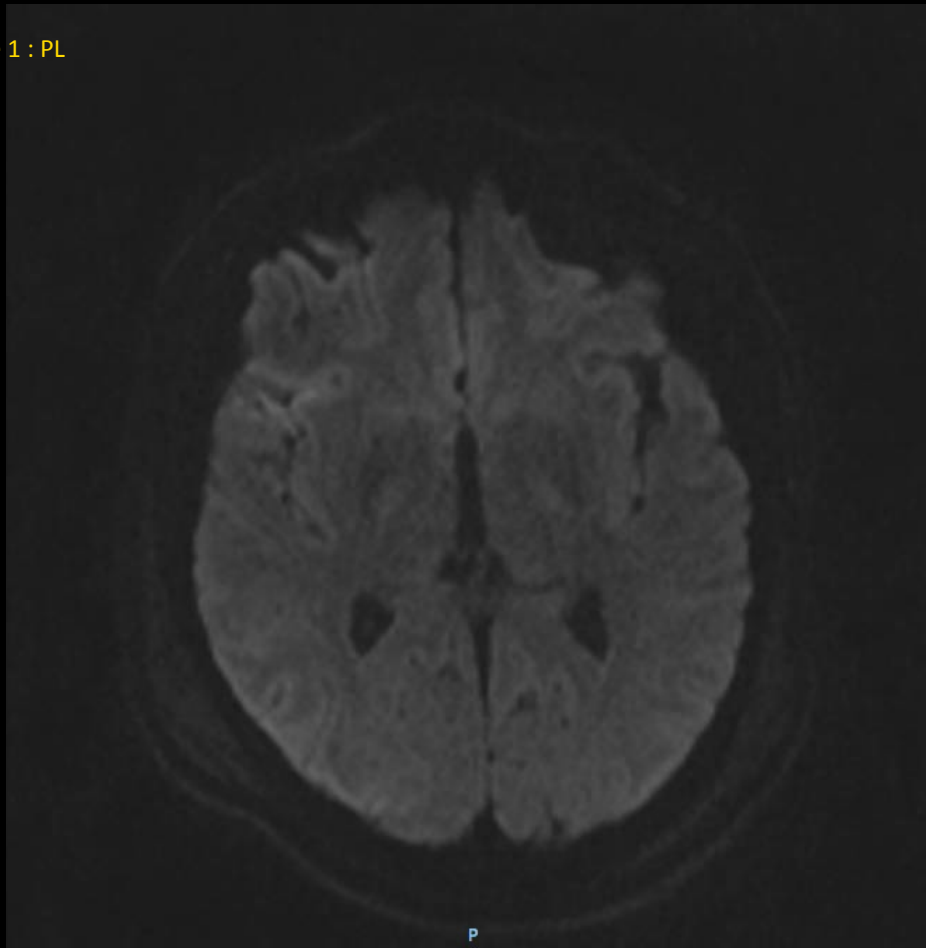
48 Year old male – Grade 1 SAH  
22 mm Right MCA Bif Aneurysm  
Incorporation - smaller M2 (Insular) Branch



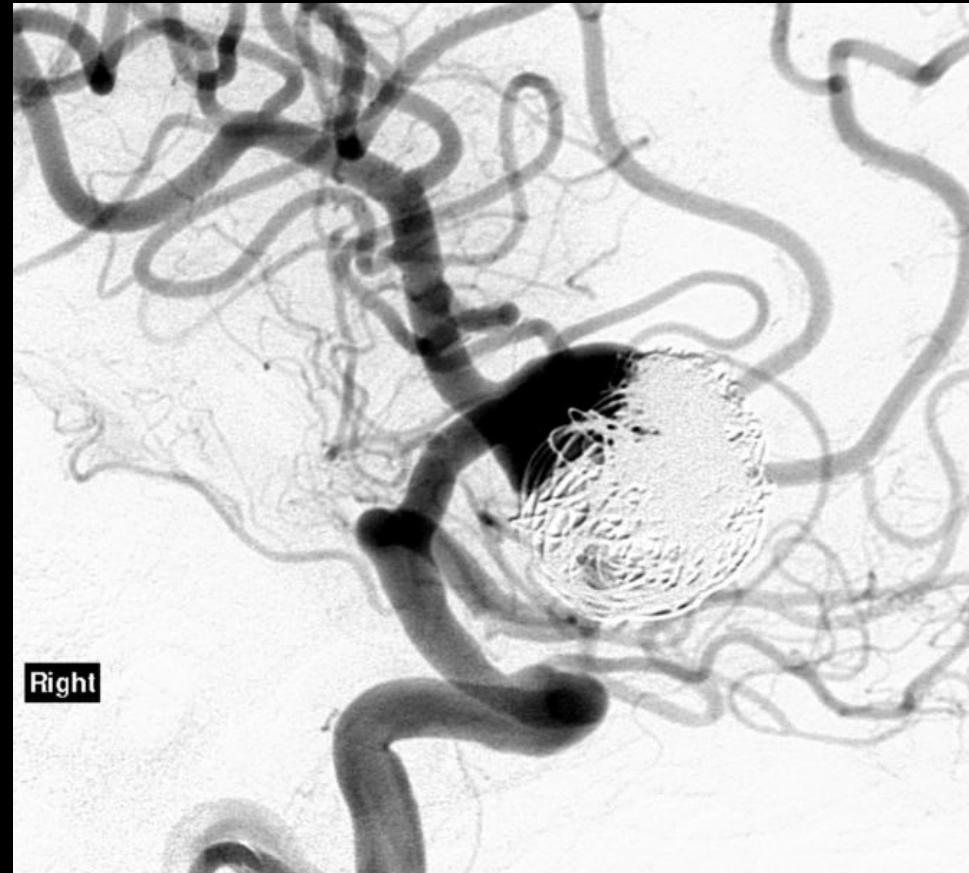
Oversized Coil to Deflect Scepter XC -> M2 Branch

Balloon assisted Coiling - 26 Coils – Hydroframe, Cosmos, Hydrosoft, VFC, Hypersoft

Note: Small Insular Branch Patent



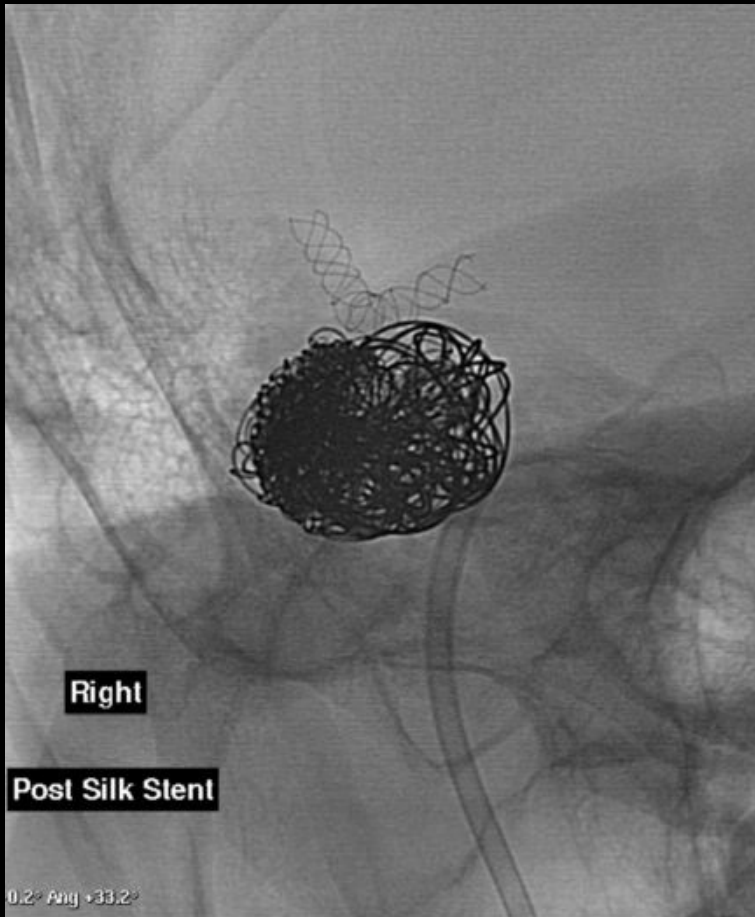
Day 1 Post Embo MRI ->No Infarct



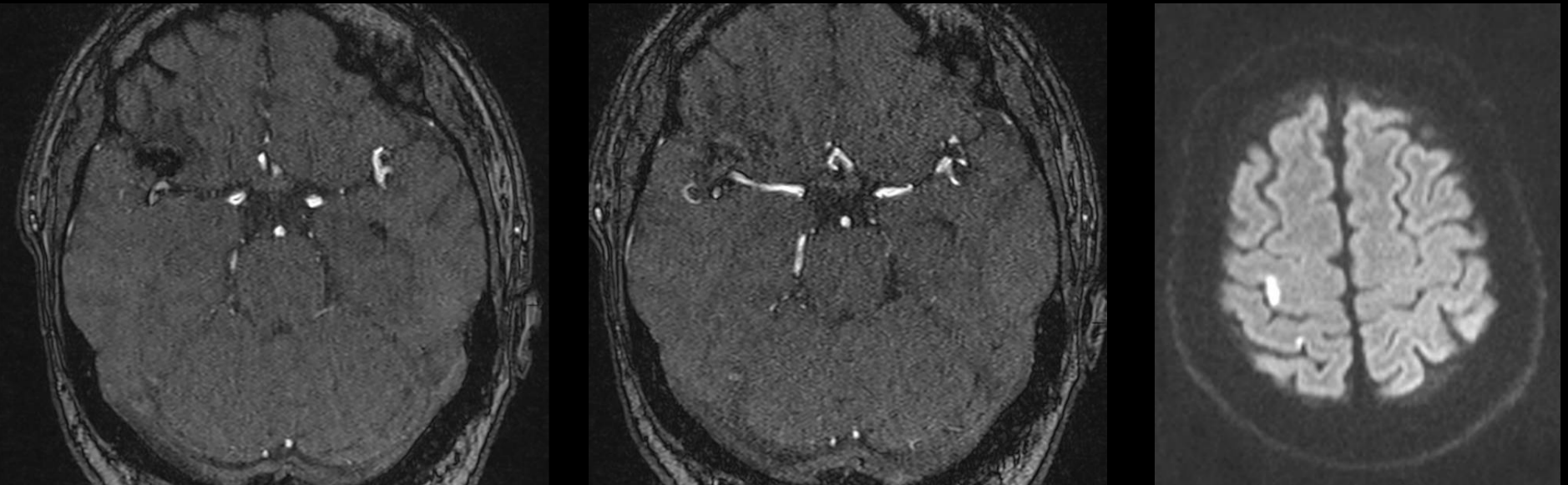
Pre Flow Diverter Deployment – 2 months post Coiling

Note: The Insular branch -> Occluded

No Symptoms / No Neurological Deficit



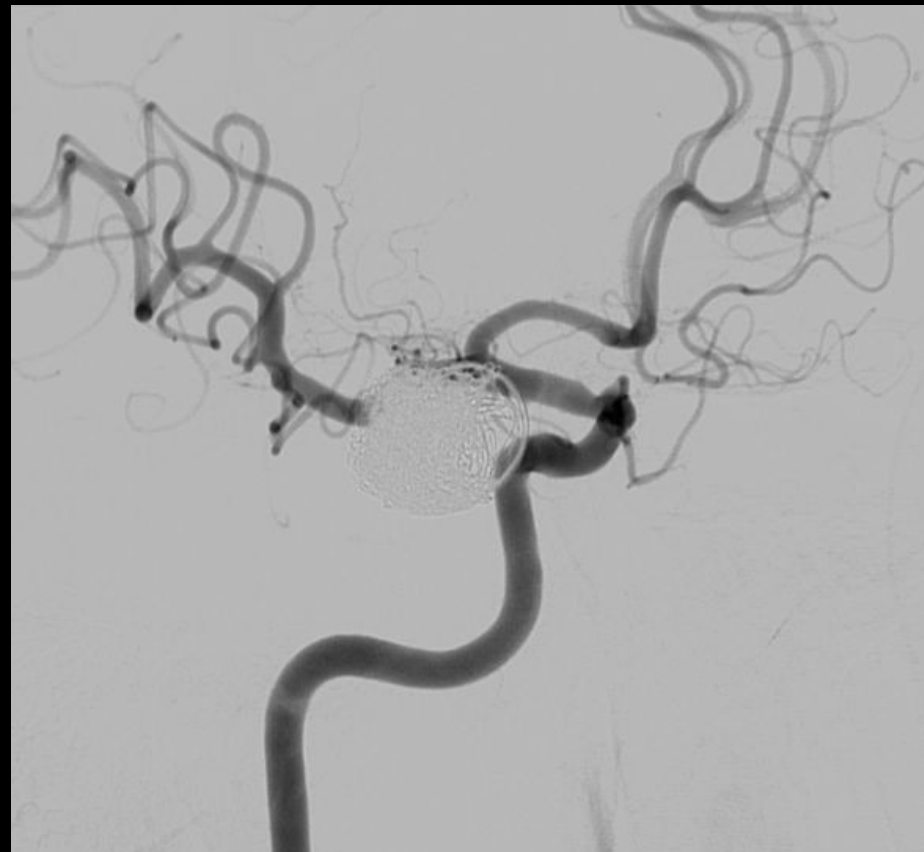
3 X 25 mm SILK deployed



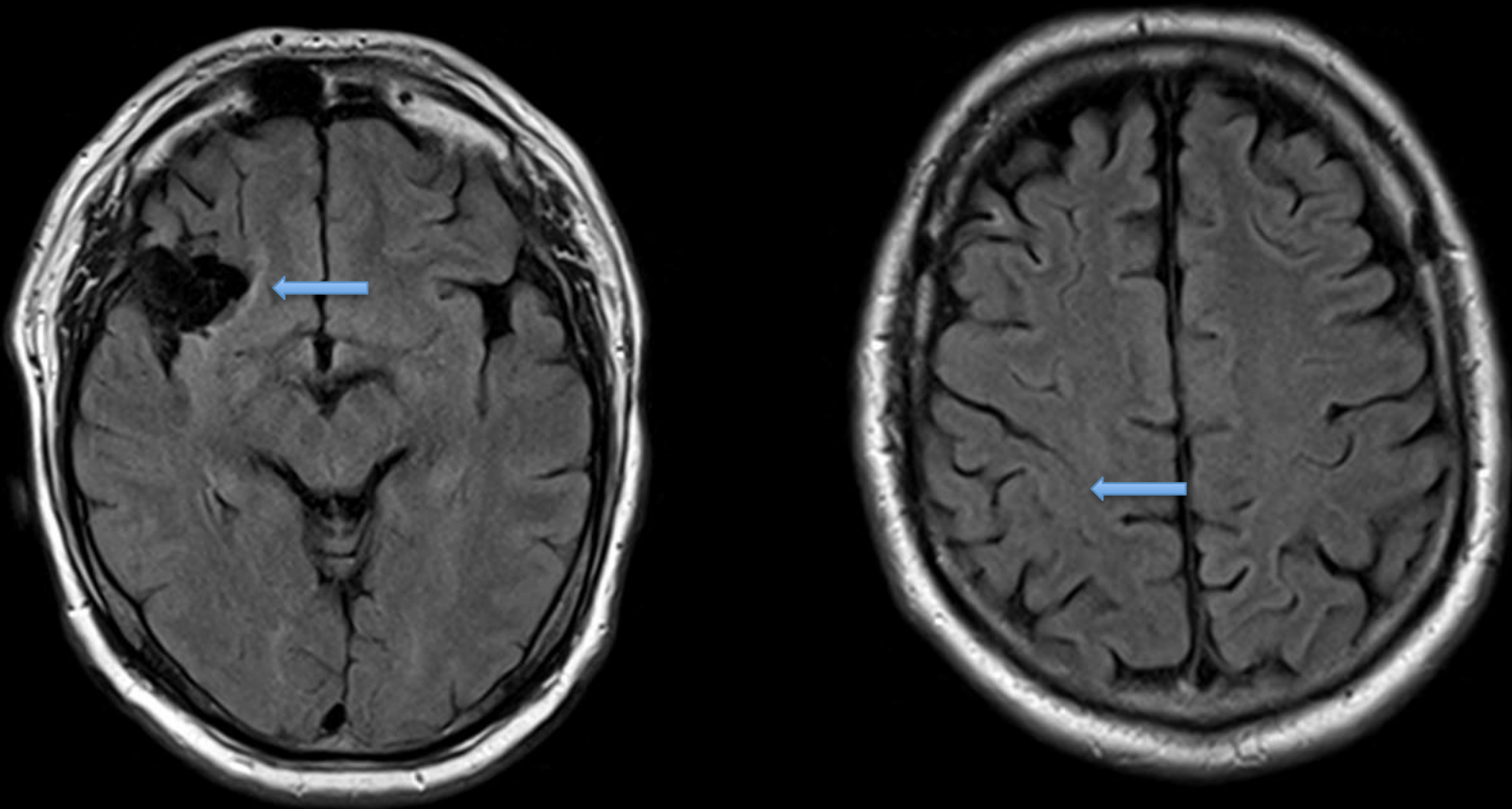
Day 1 MRI – SILK Patent

No Flow Enhancement in Aneurysm

Small DWI lesion in Hand Area -> Mild Left Hand Weakness



6 Months DSA – Aneurysm Occluded

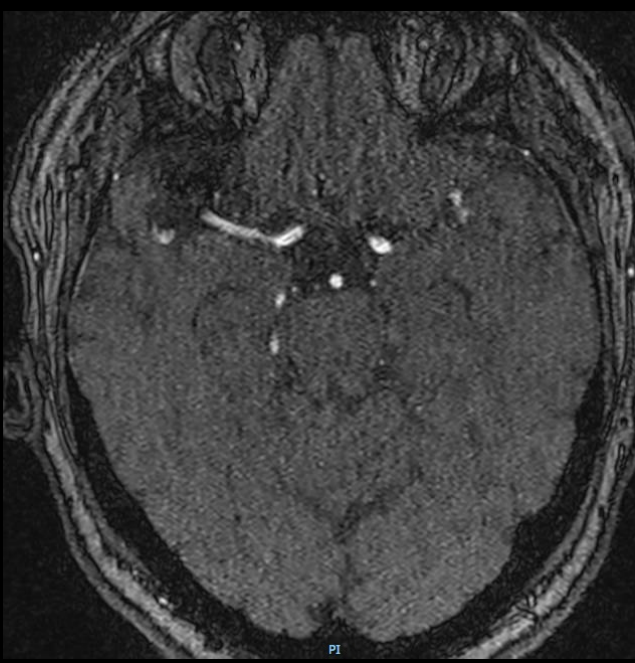


3 Year Follow up: Clinically Normal, No Neurological Deficit

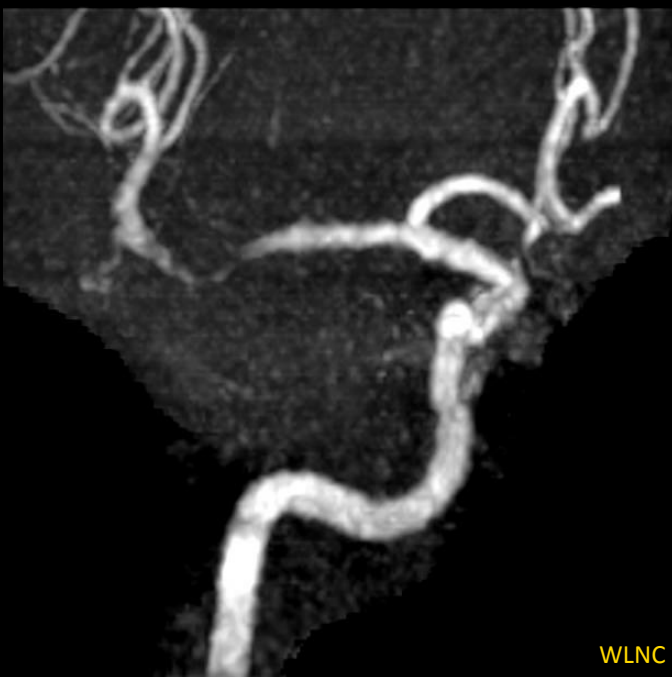
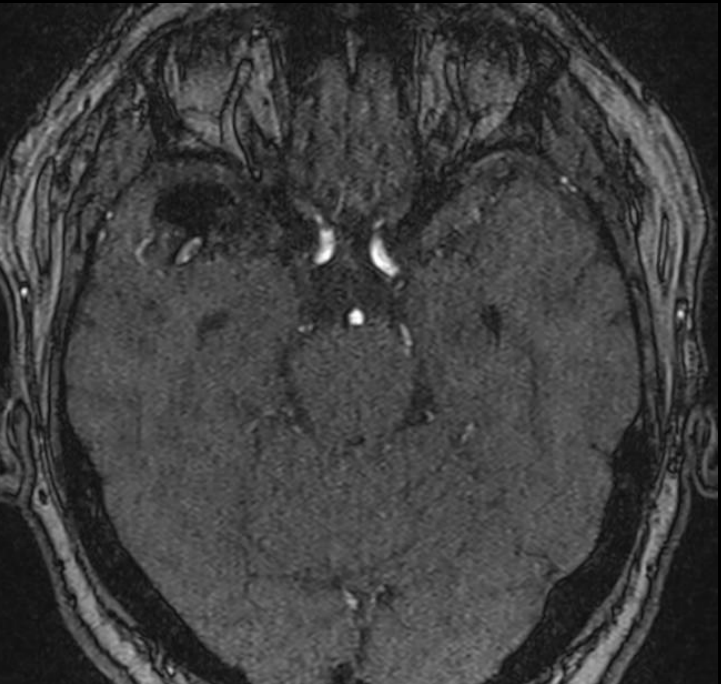
Note: Silent Infarct (Old) of right Insular from the Branch Occlusion

No Residual Infarct in Right Hand Area





3 Year Follow up:  
Clinically Normal,  
No Neurological  
Deficit



Note:  
No Recurrence.  
SILK patent