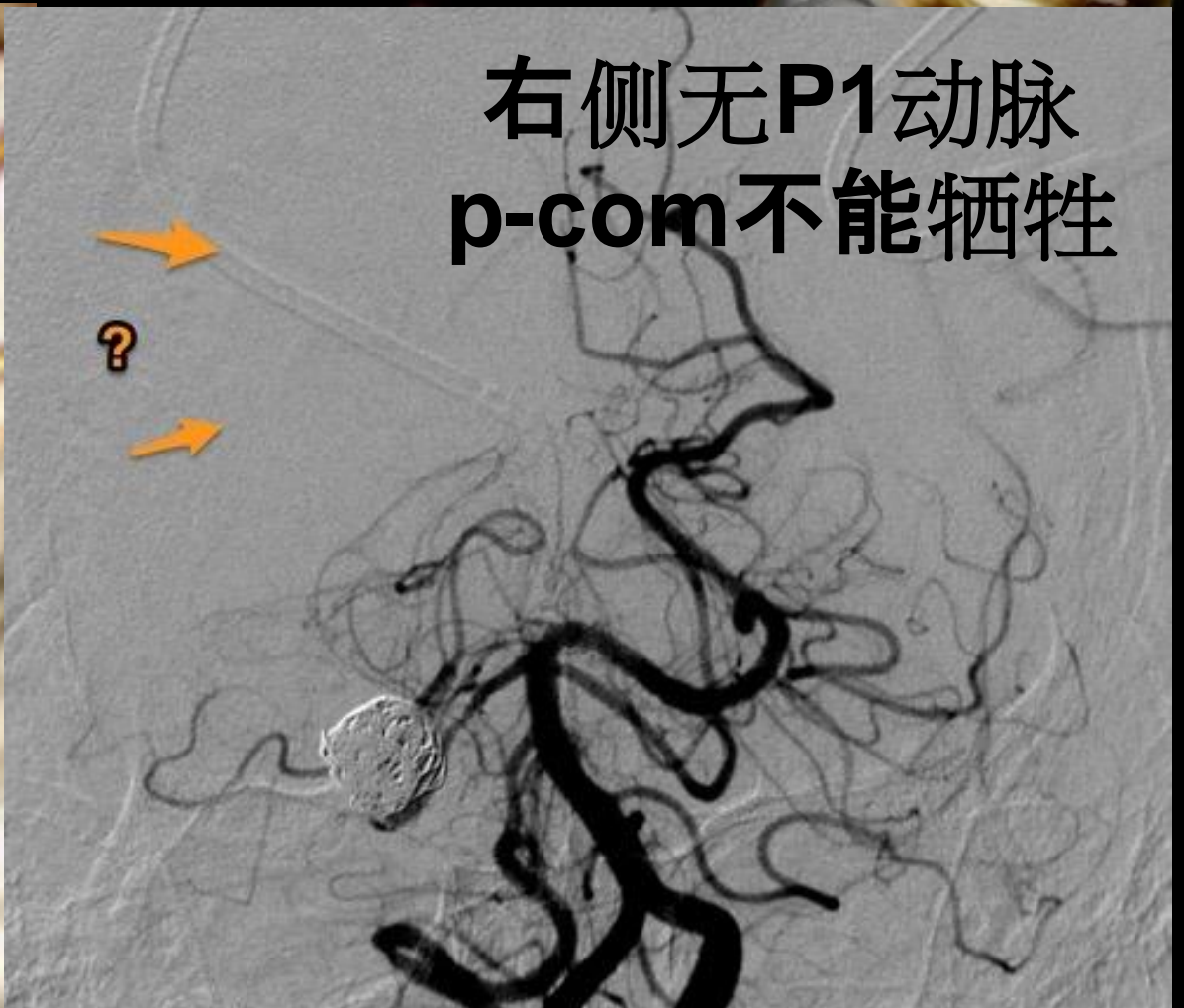
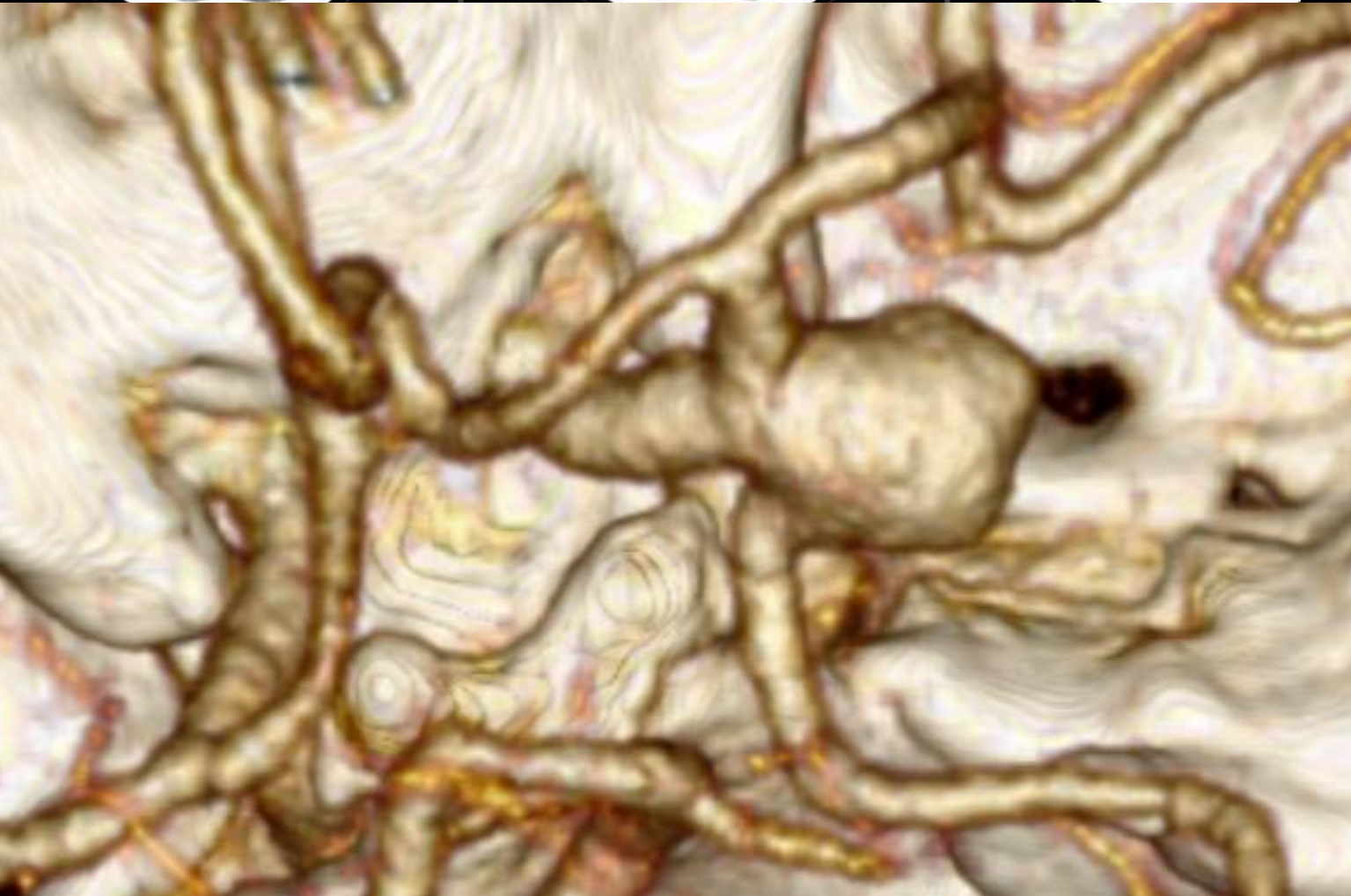
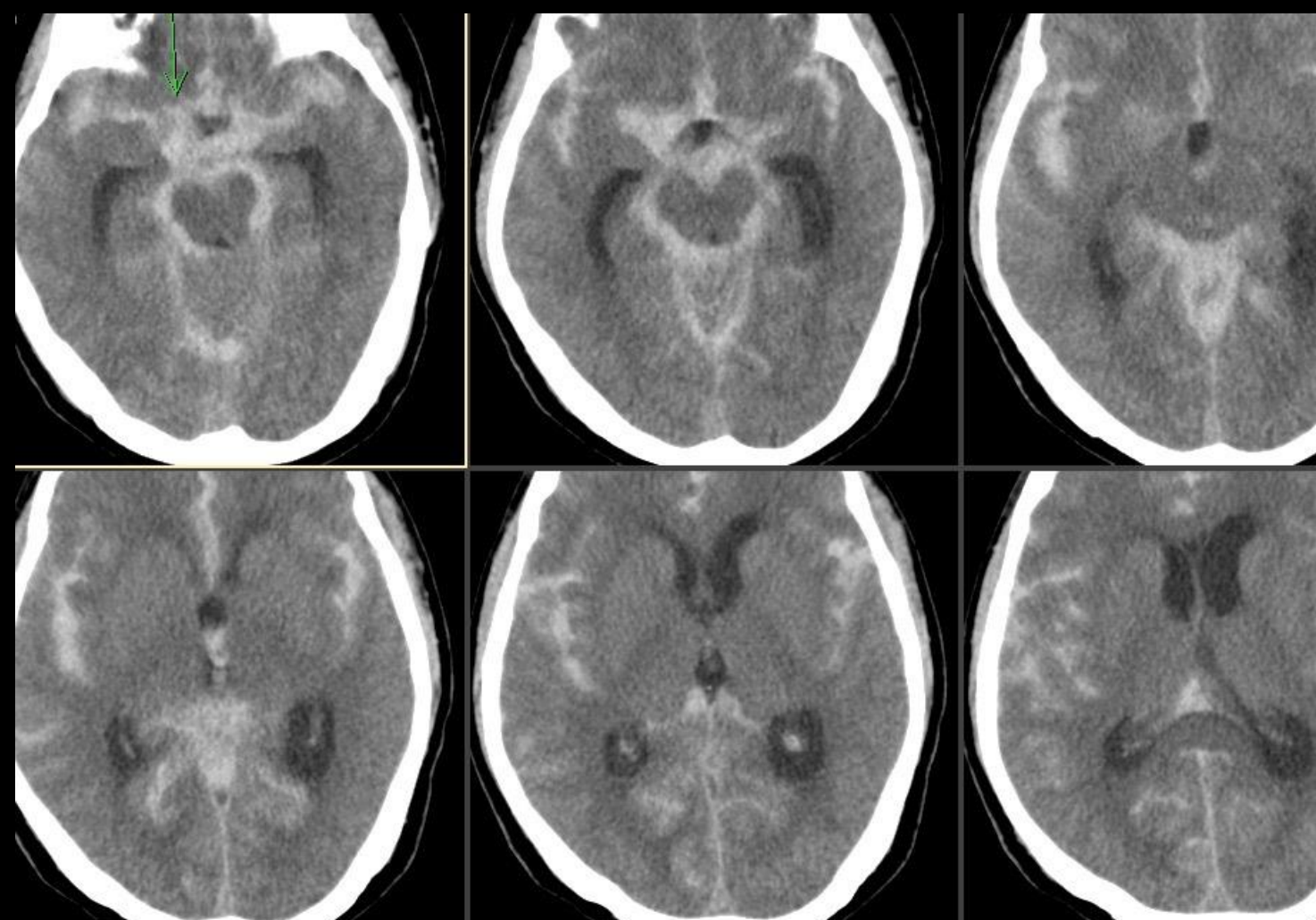
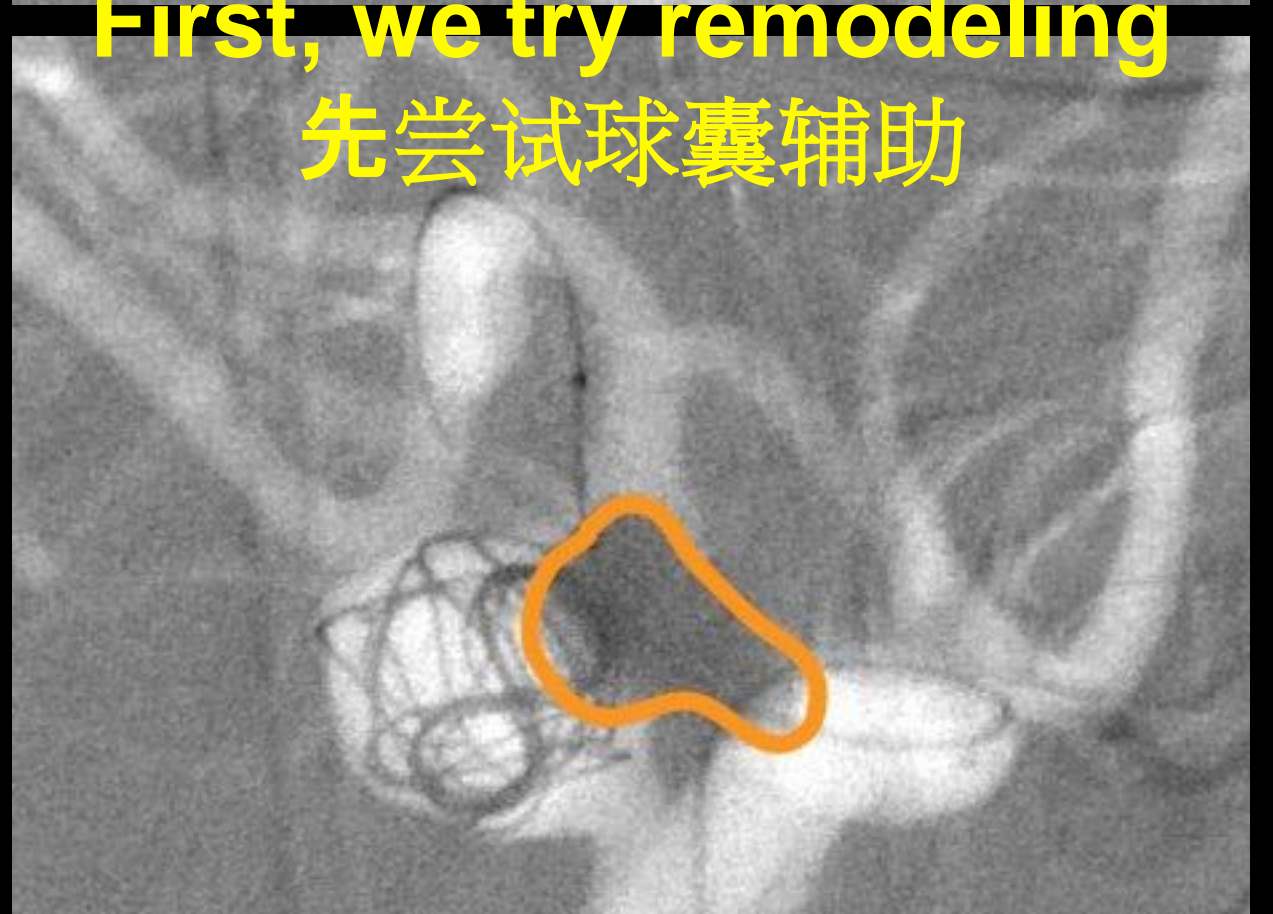
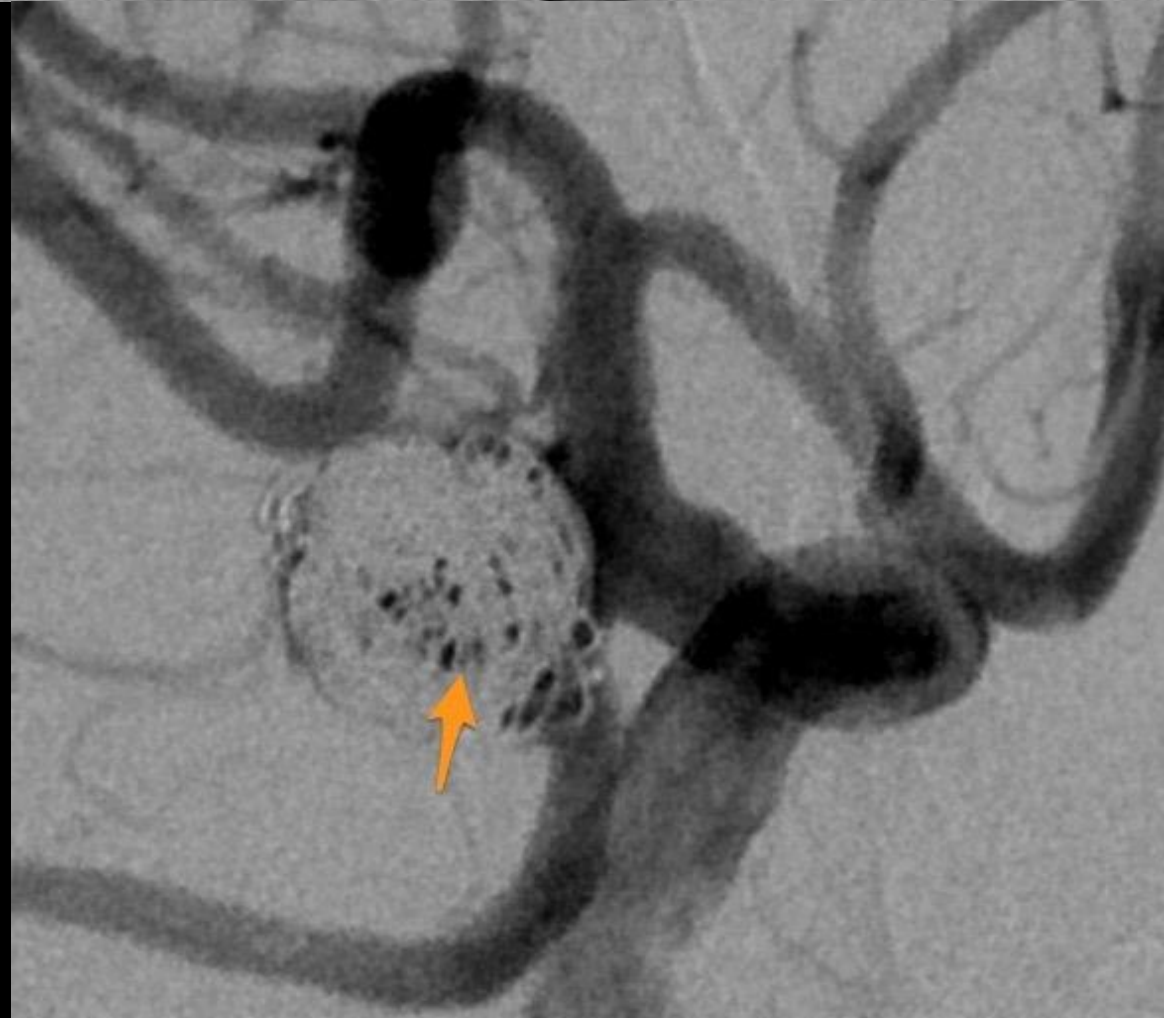


Retrograde stenting P-com aneurysm

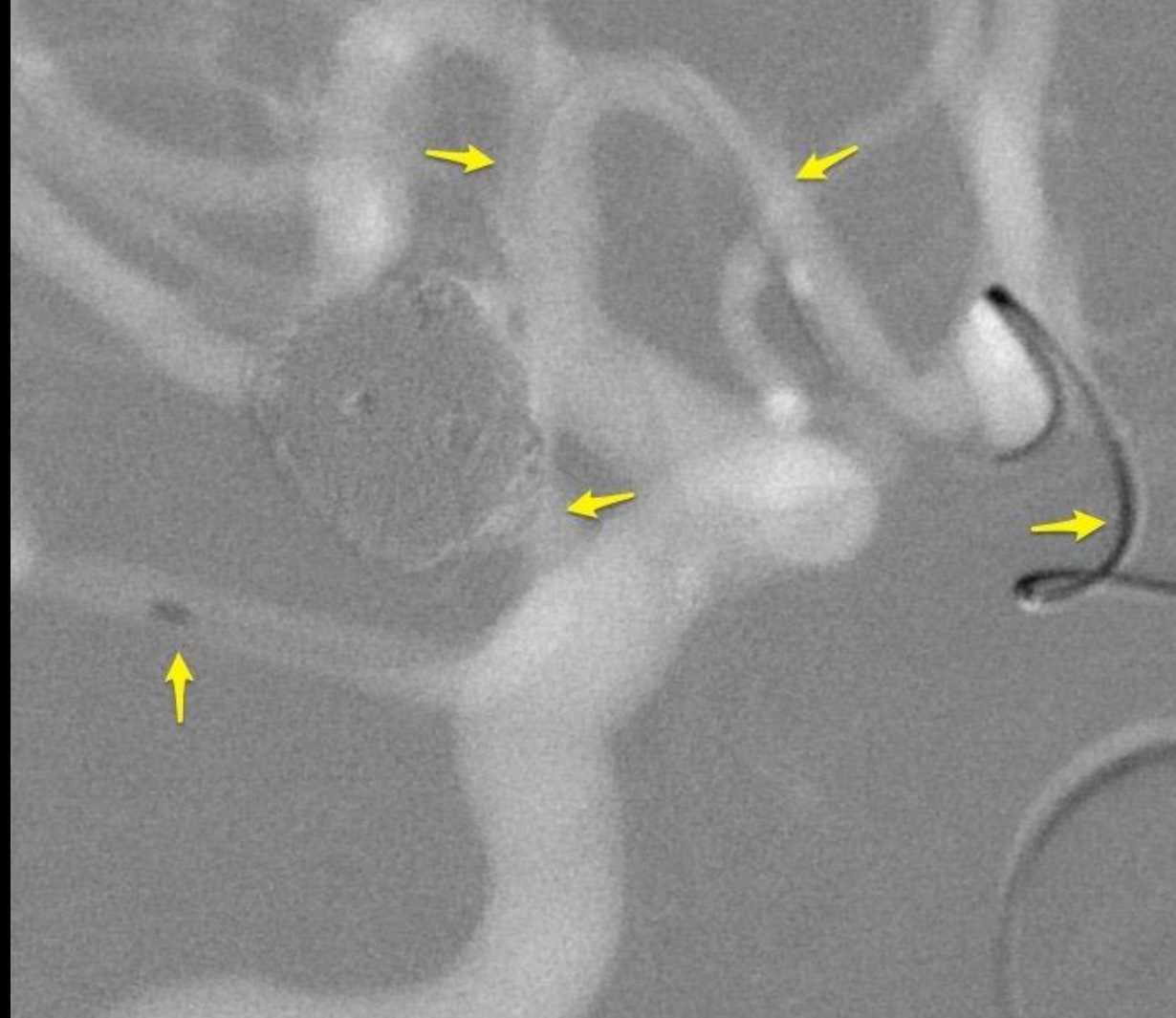
Alvin Wang, Chang-Gung Hospital, Taiwan, China
王以舟, 林口长庚医院, 中国台湾



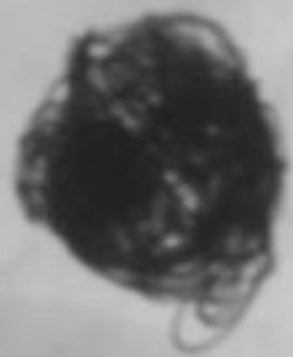


First, we try remodeling
先尝试球囊辅助

因为无法致密栓塞,隔天第二次栓塞
支架导管由对侧ICA经Left A1,
A-com, right A1, Rt ICA到 P-com



After 支架置放后继续栓塞



2015/12/10



2014/7/15 post



2015/12/10 post TAE

