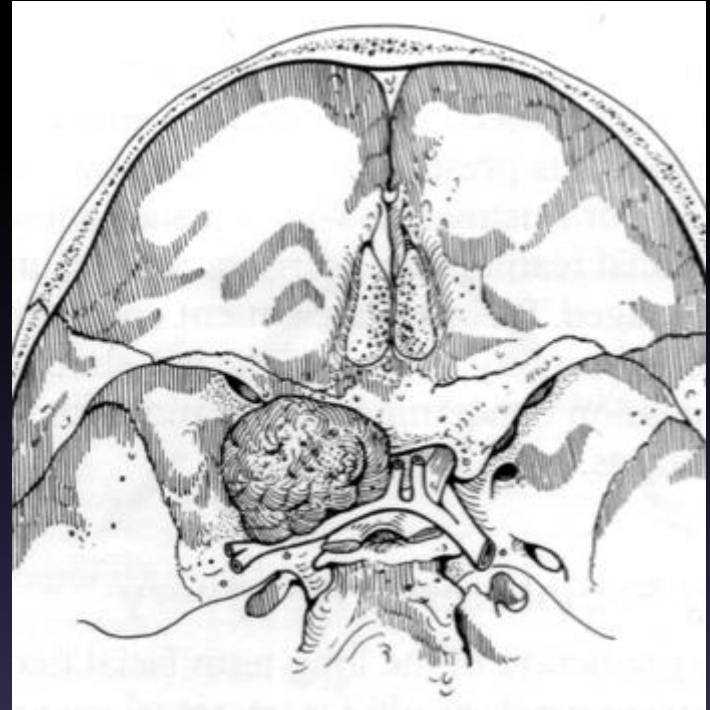
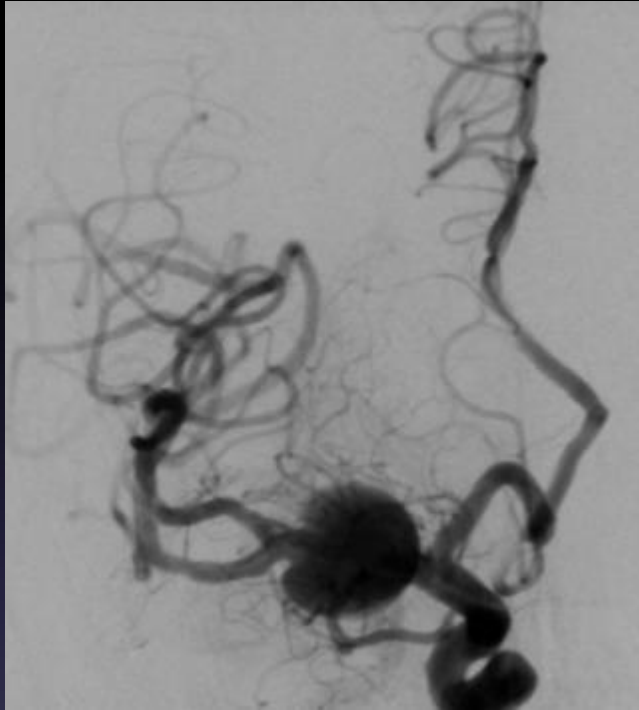


# Large dissecting MCA aneurysm

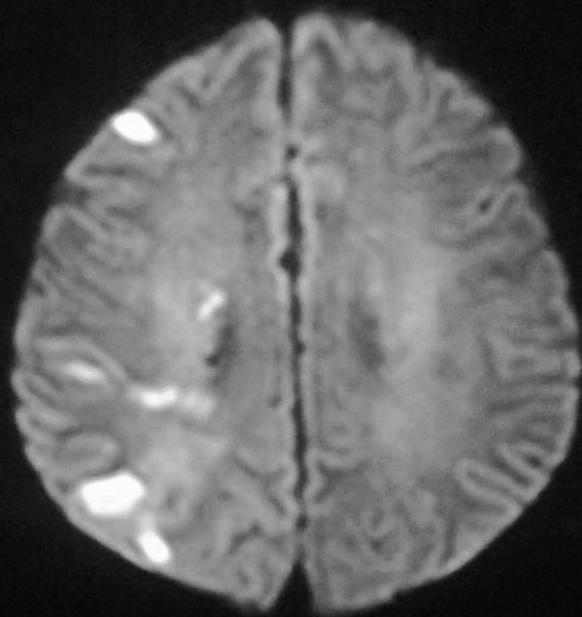
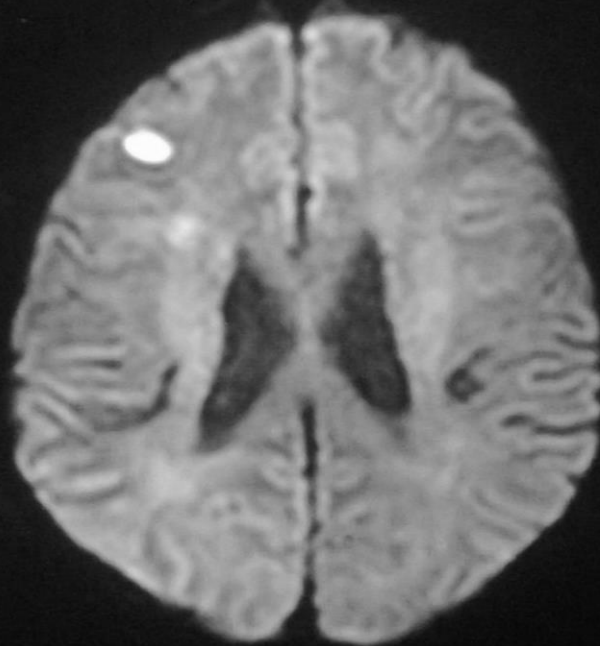
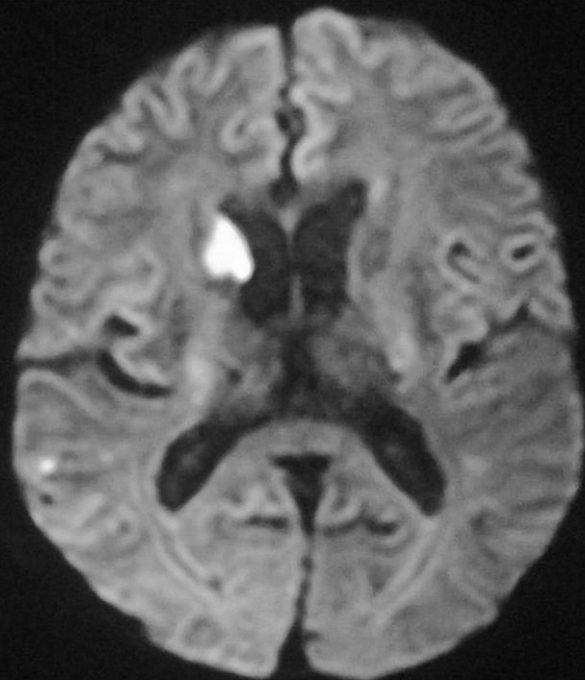
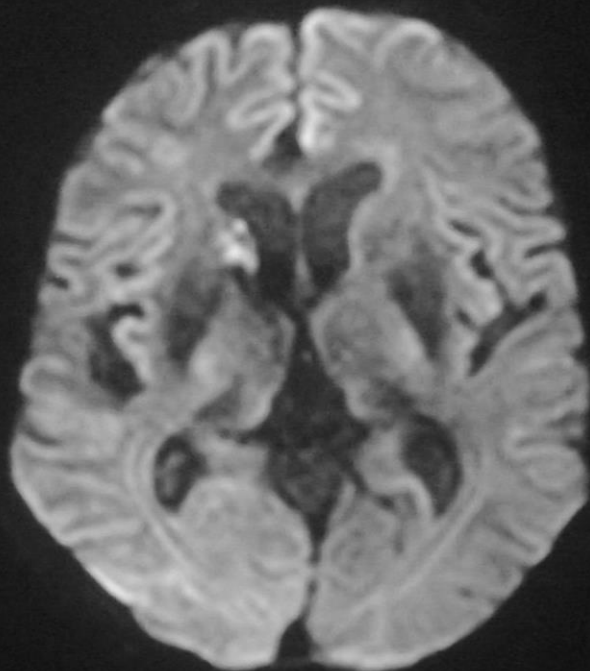


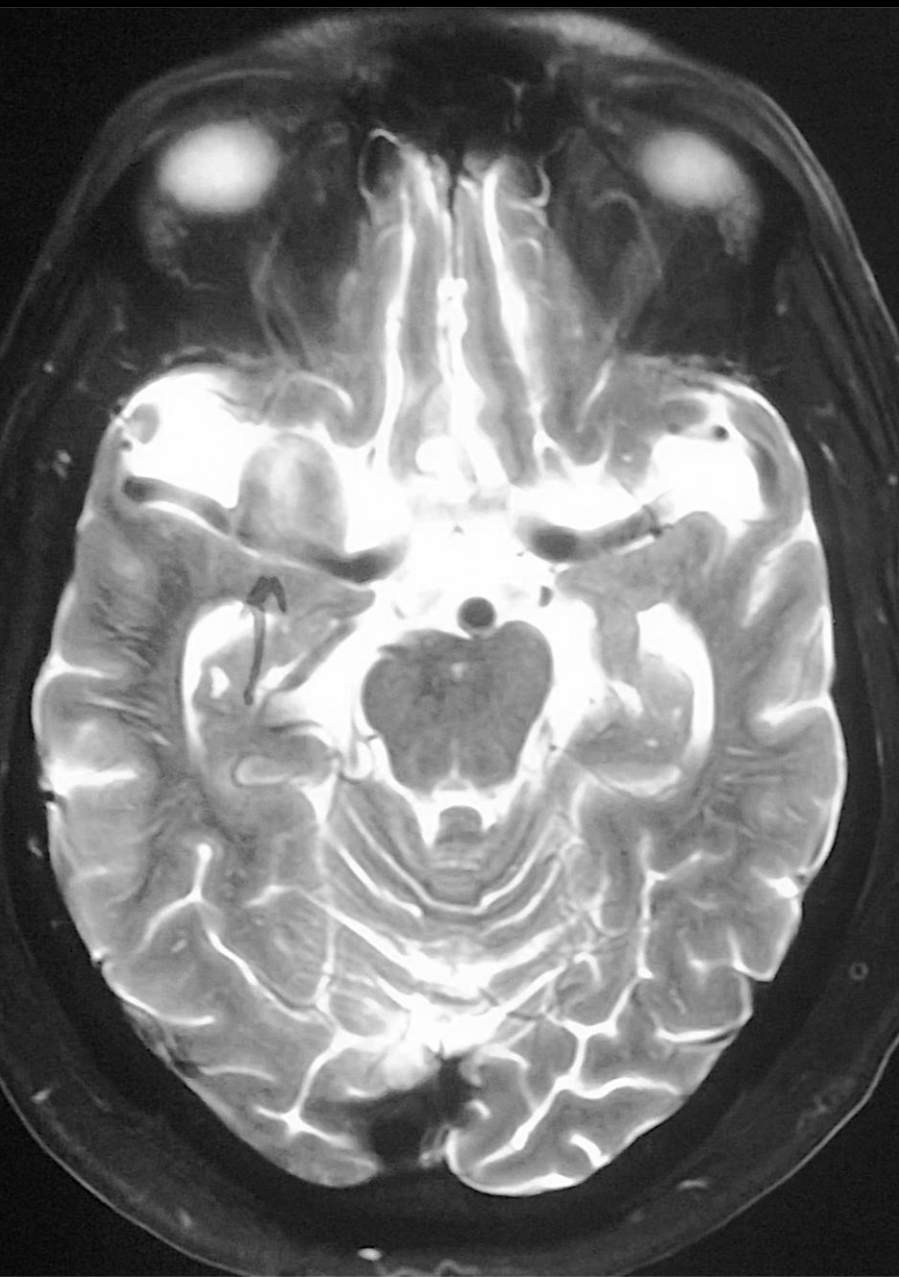
UDAY LIMAYE

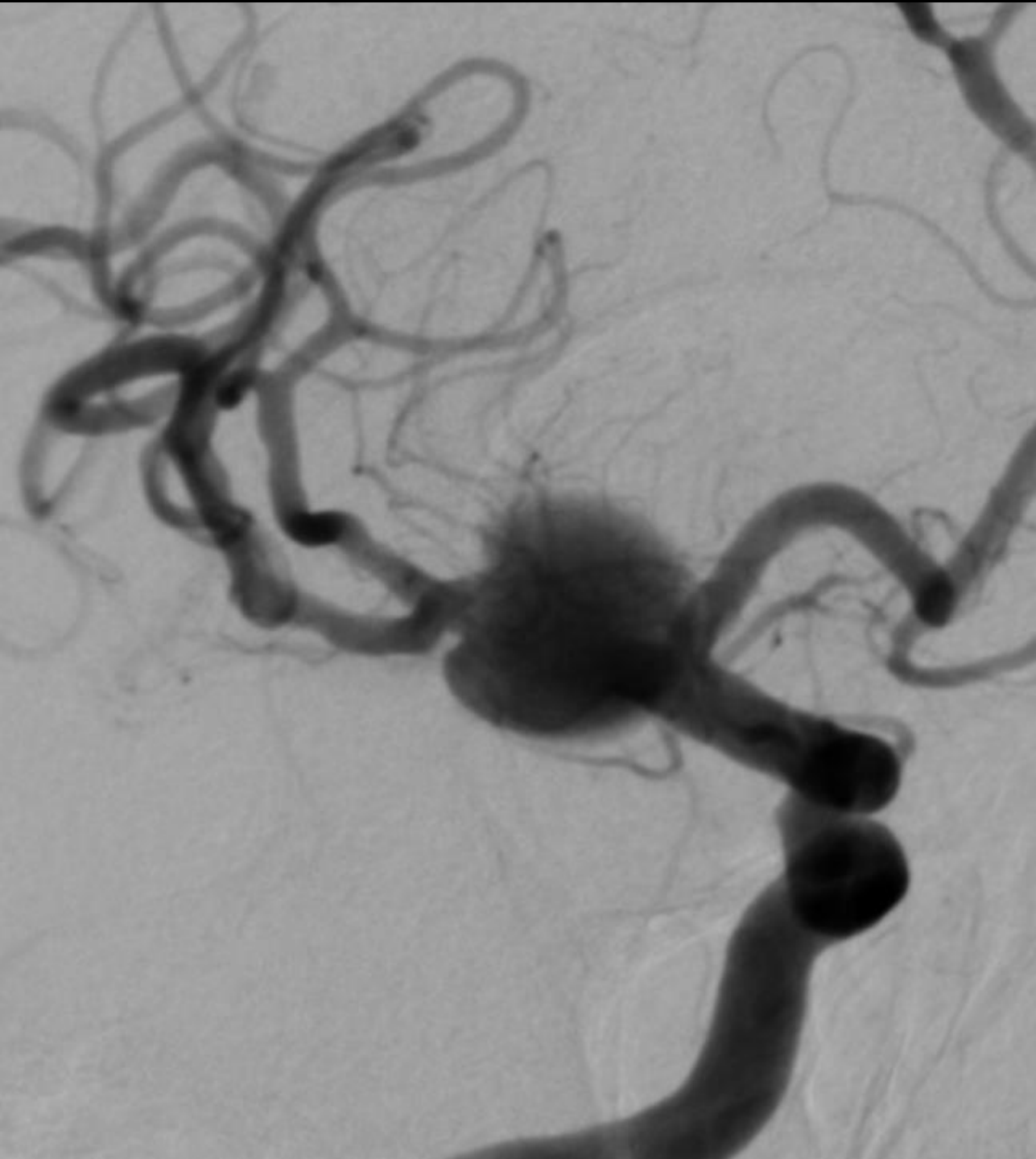
INTERVENTIONAL NEURORADIOLOGIST

MUMBAI, INDIA

59 Y/M with transient left  
hemiparesis







RT ICA LAT





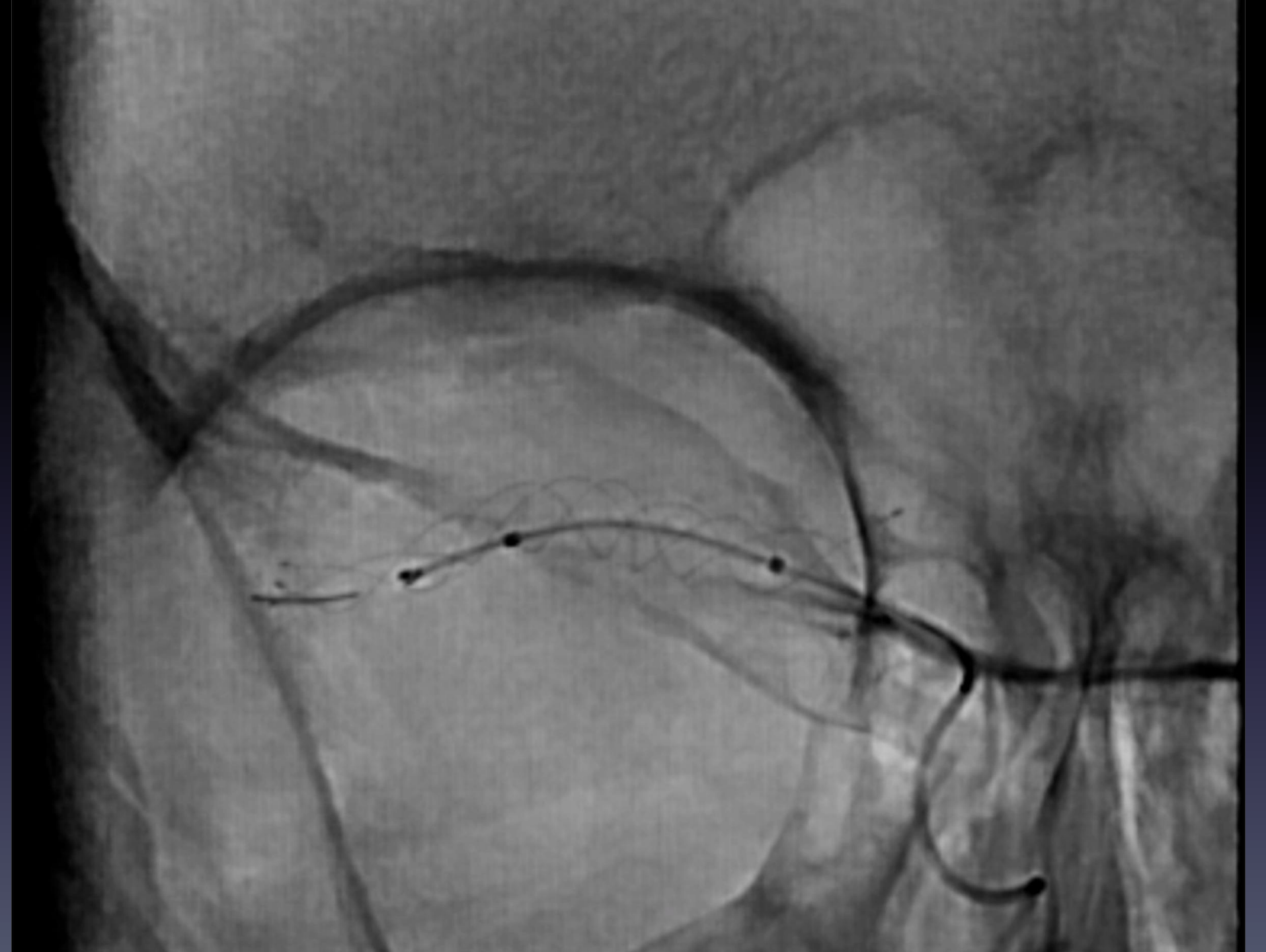


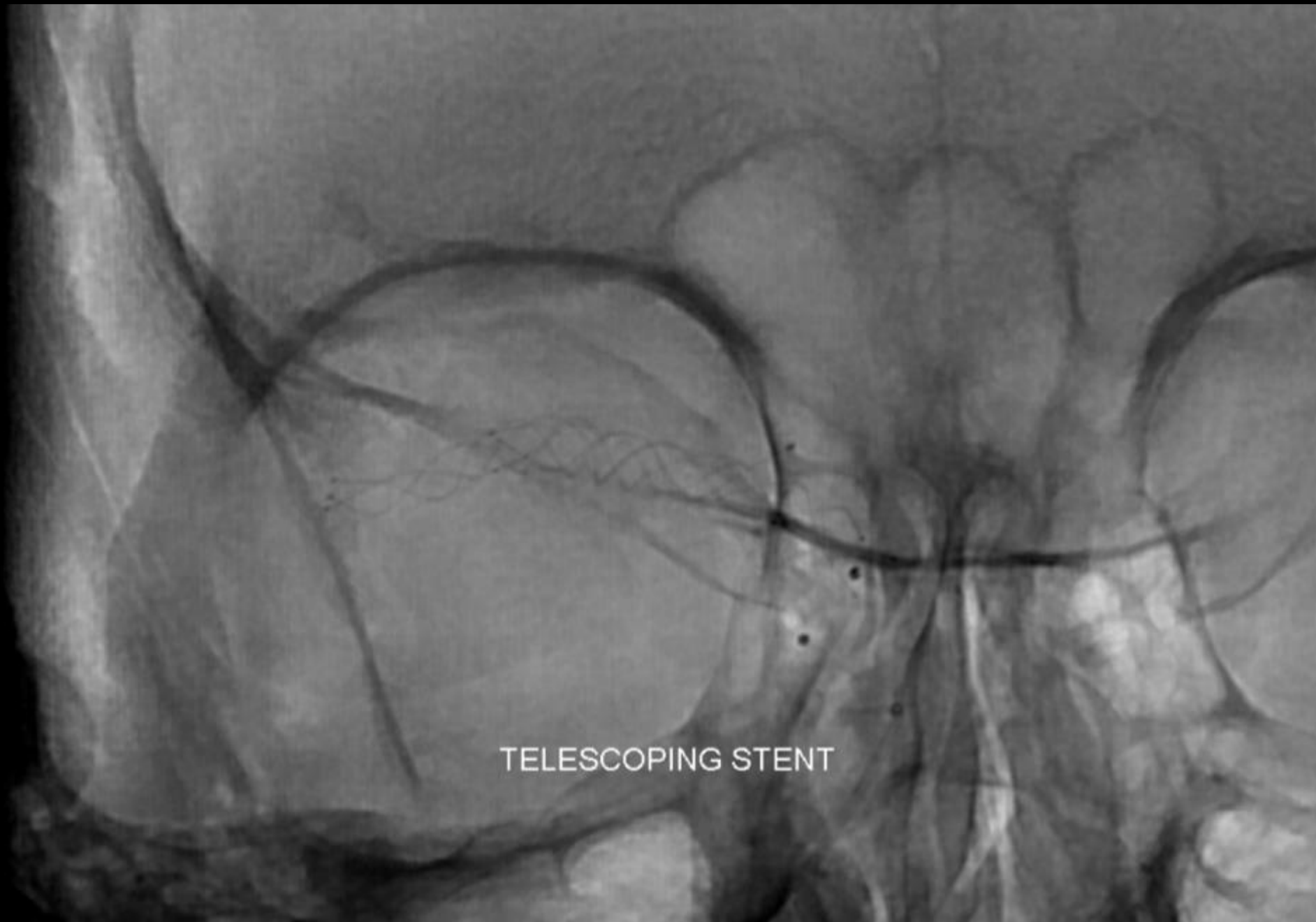
LVIS JR 3.5 X33MM

A black and white fluoroscopic image showing a surgical procedure. A thin, dark line representing a catheter (SCEPTER) is visible, extending from the right side of the frame, curving downwards, and then upwards to enter a large, dark, circular area on the left, which is the tentorial space. The background is a mottled, greyish texture representing the surrounding tissue.

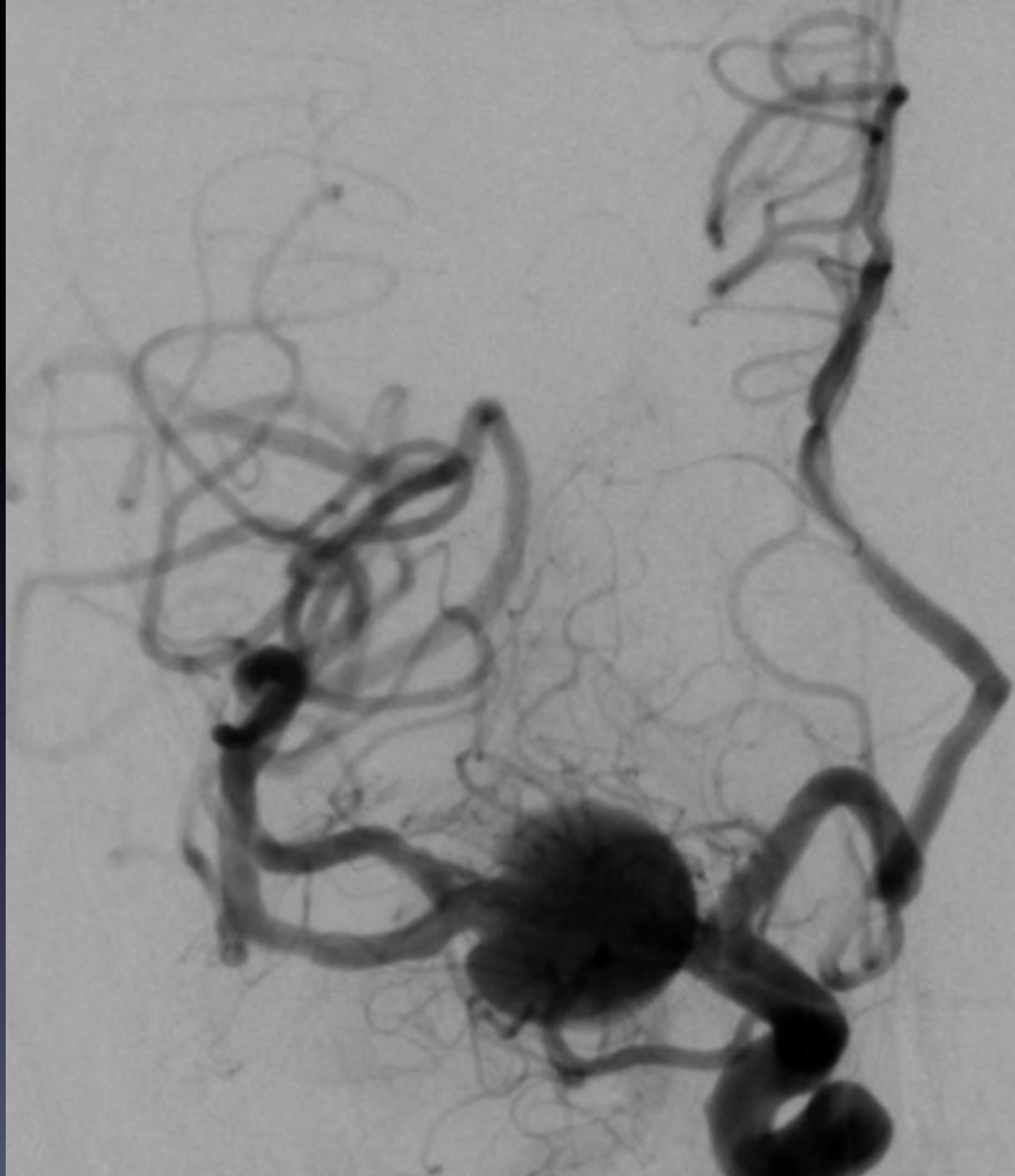
SCEPTER ACROSS THE TENT

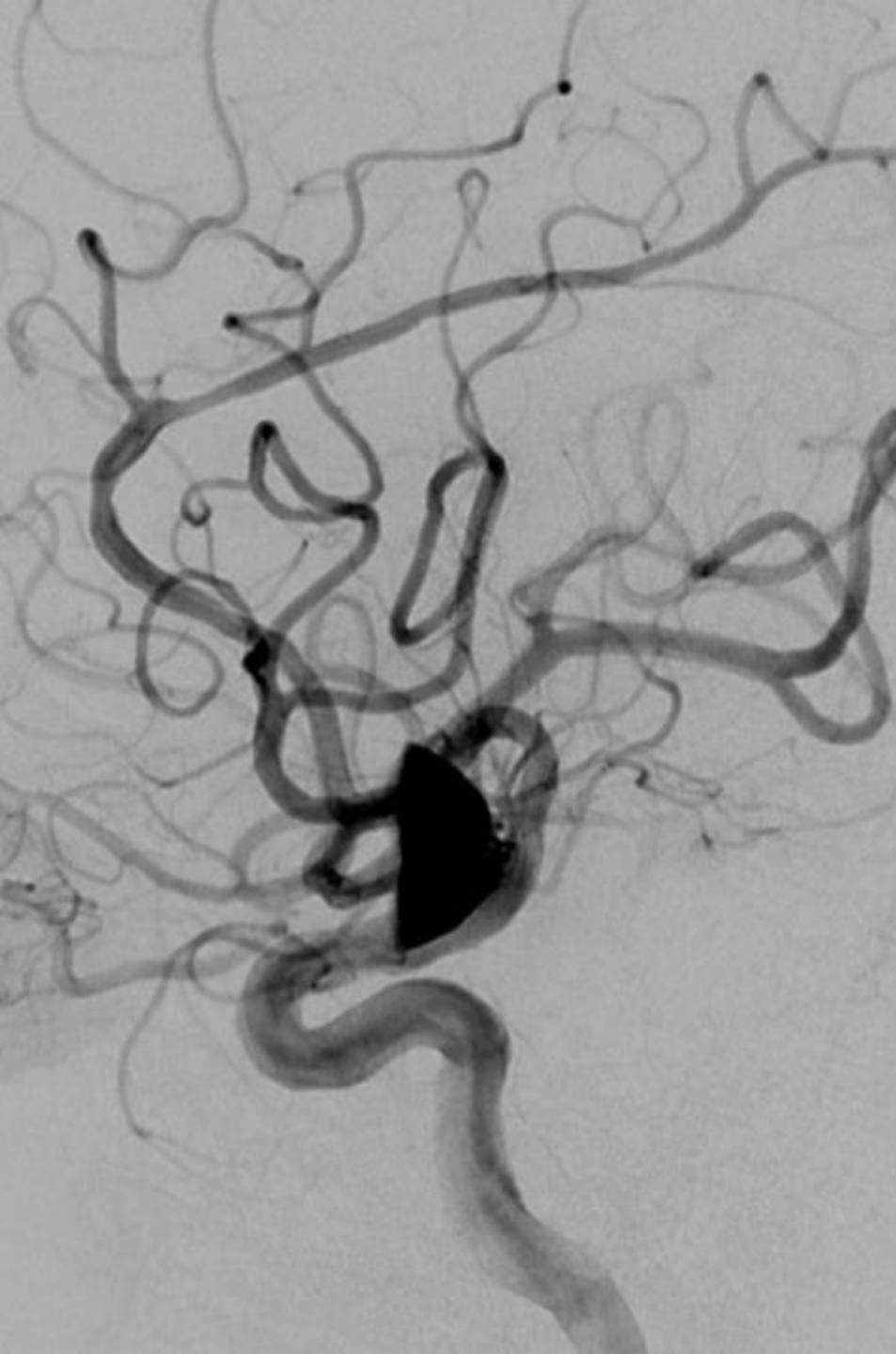






TELESCOPING STENT





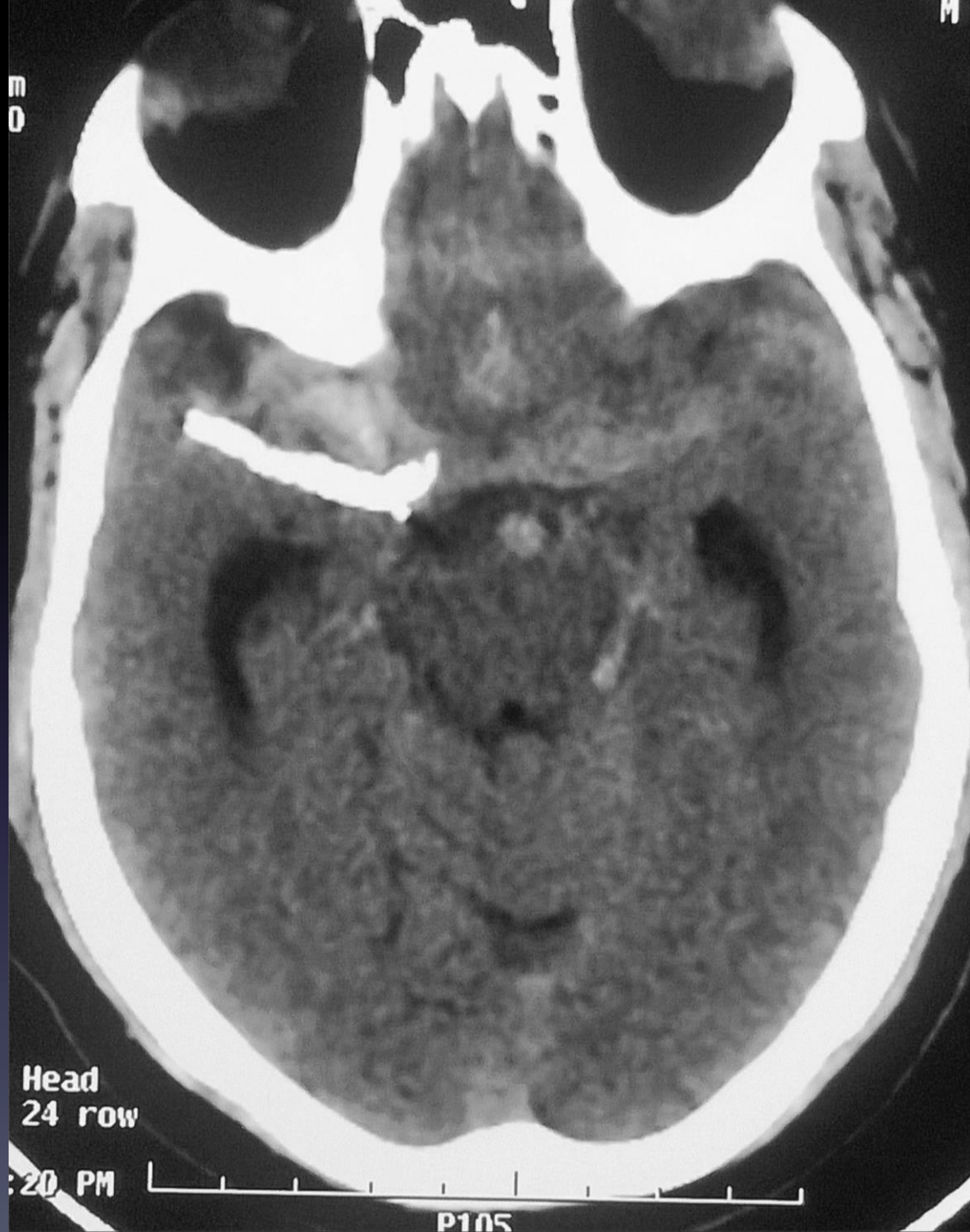






**10 DAYS LATER**

- Severe headache with giddiness

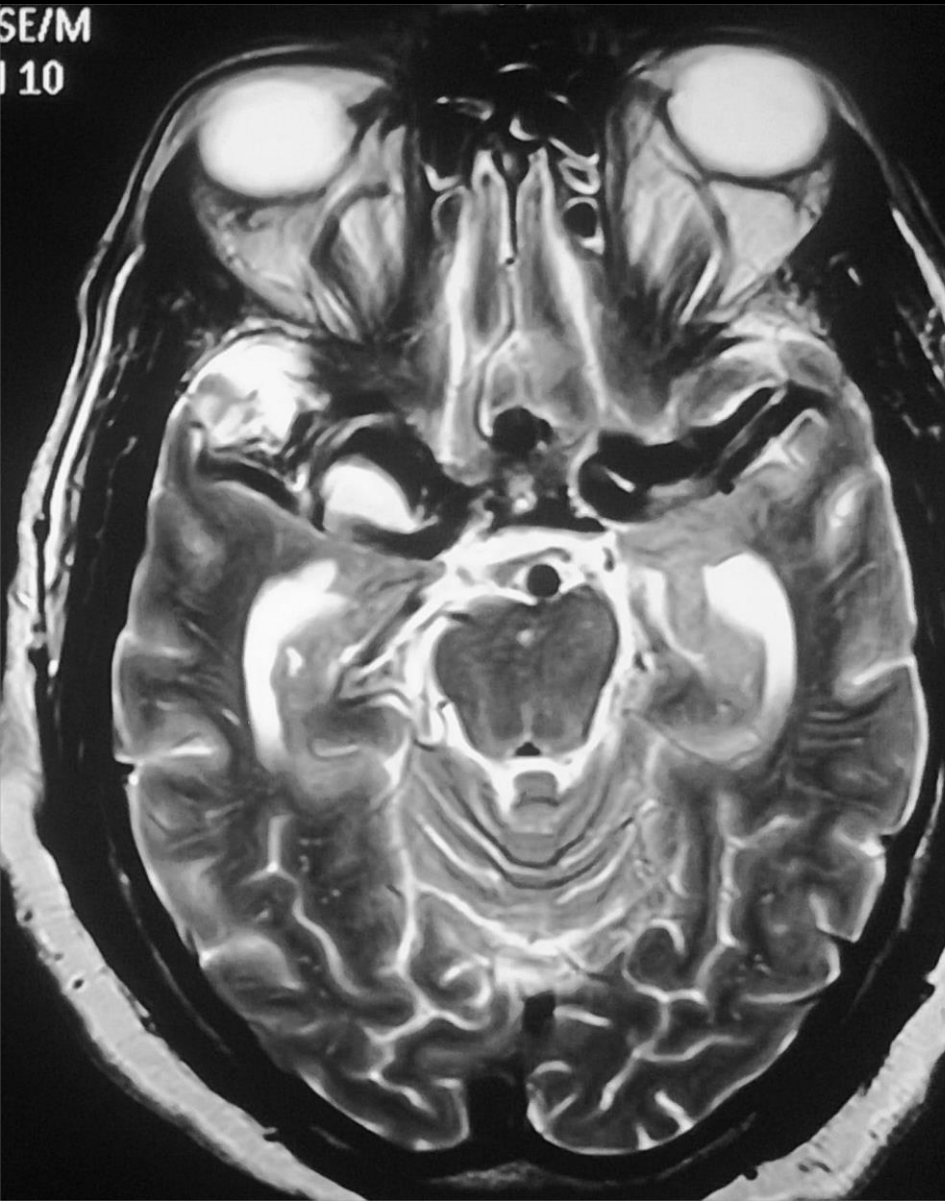


Head  
24 row

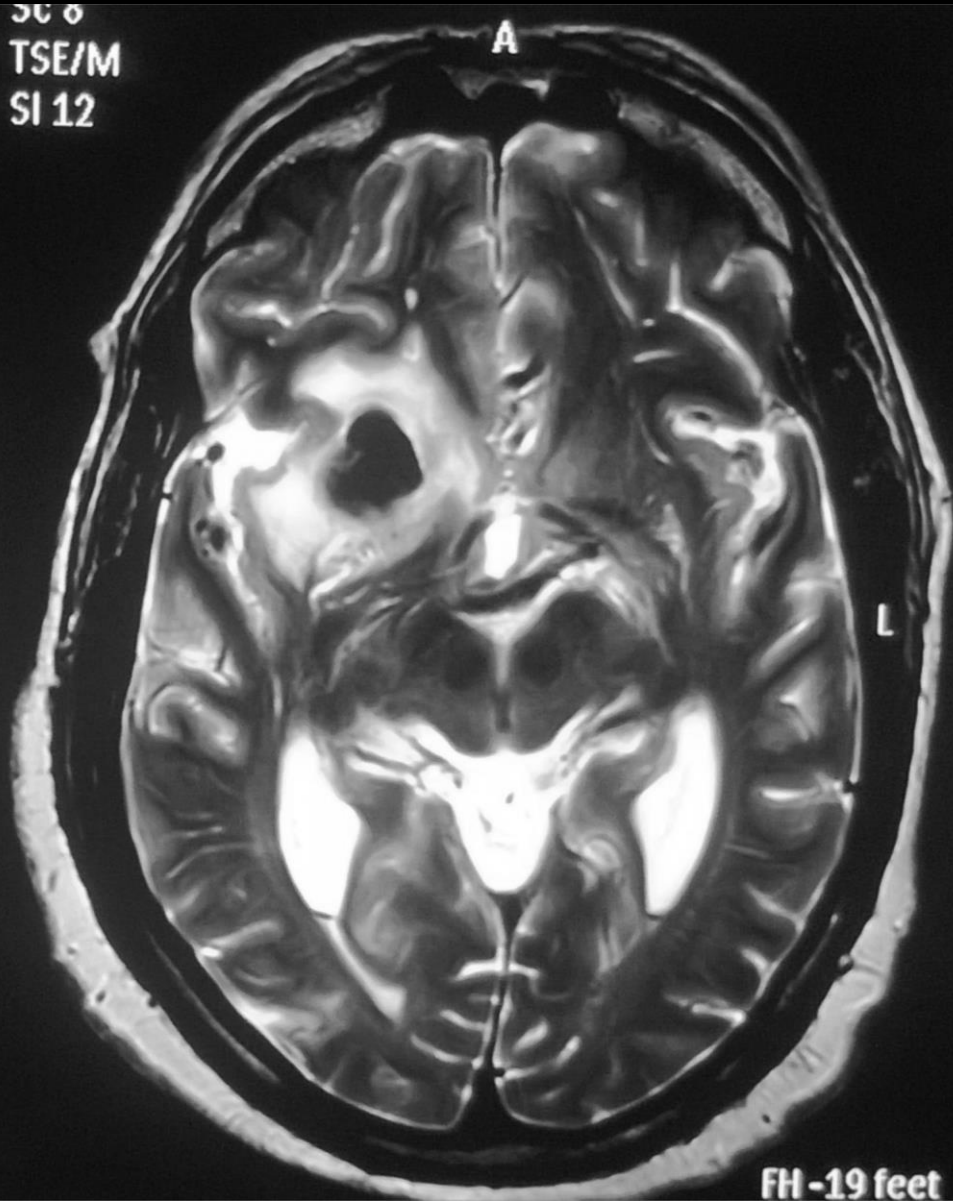
20 PM

P105

SE/M  
10



SC 8  
TSE/M  
SI 12

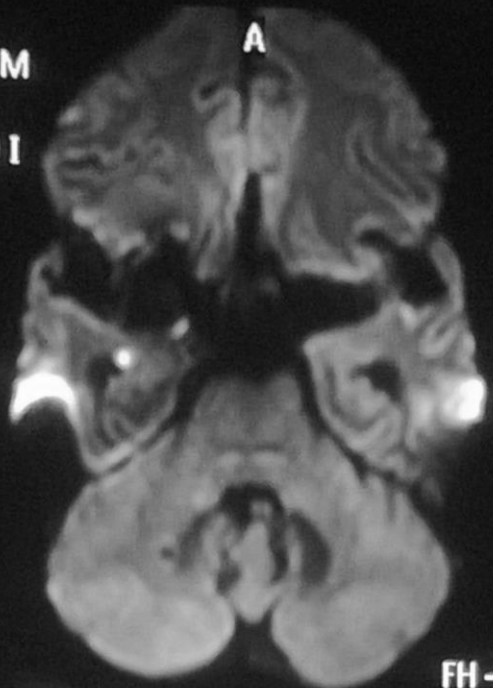


FH -19 feet



E/M

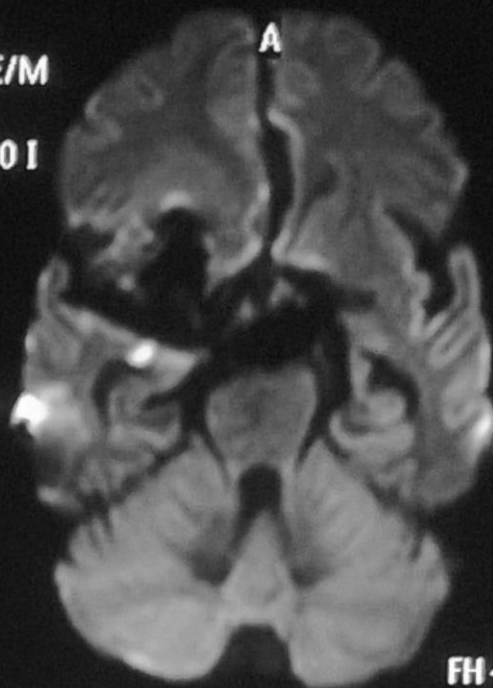
00 I



FH-42 feet

L

Sc 7  
DwiSE/M  
SI 9  
b 1000 I

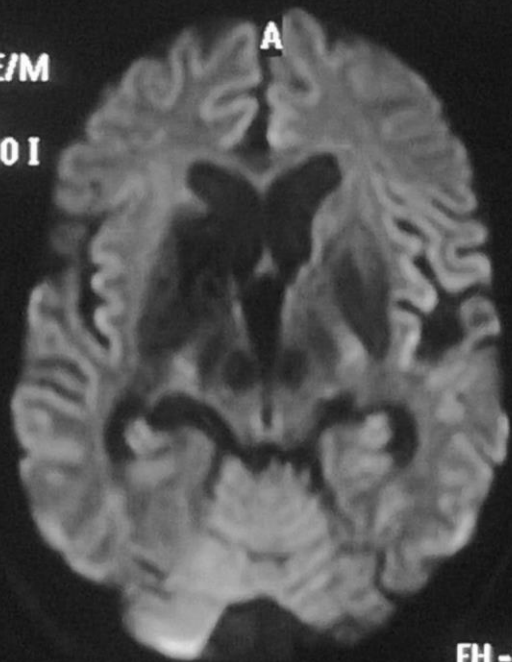


FH-36

A

E/M

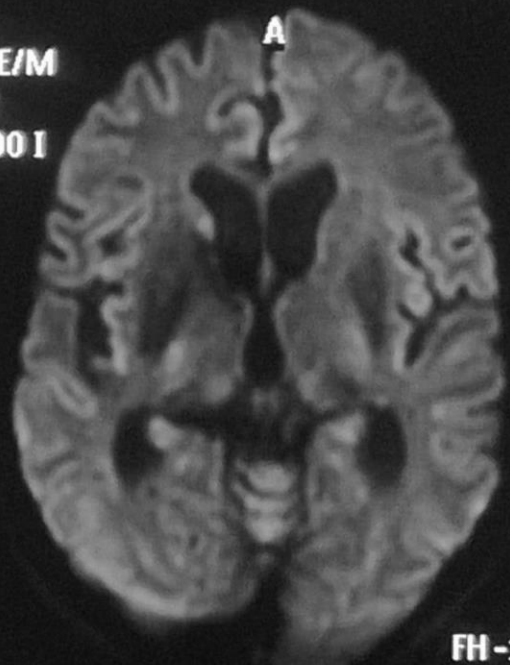
00 I



FH-24 feet

L

Sc 7  
DwiSE/M  
SI 12  
b 1000 I



FH-18 feet

A

L

**PLANNED FOR ANGIO SOS RX**

- Convulsion
- Loss of consciousness



- Pupils fixed dilated
- Doll's eye – absent