

Neuroform ATLAS Case Presentation

Ricardo A Hanel, MD PhD

Director, Stroke and Cerebrovascular Center

Cerebrovascular Fellowship Director

Lyerly Neurosurgery

Baptist Neurological Institute

Jacksonville, FL

rhanel@lyerlyneuro.com



Disclosures

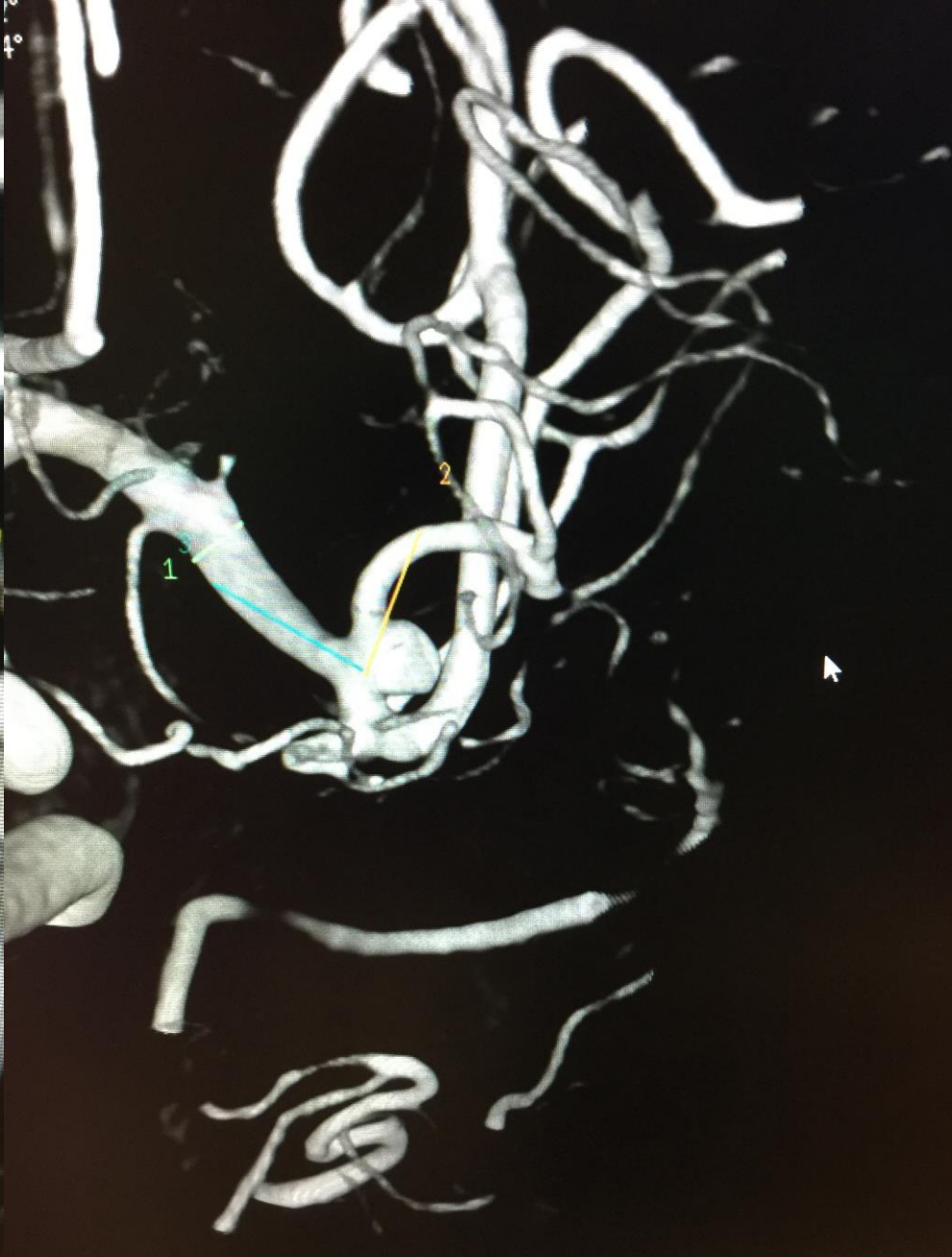
- Consultant:
 - Covidien
 - Pipeline Proctor
 - Steering committee IntrePED and Aspire
 - PI Premier Pipeline
 - Stryker
 - PI SCENT Trial
 - Codman
 - Microvention
- Scientific Advisor: Medina Medical
- Investor: Blockade Medical



- 64 yo, female
- SP Rt crani for clipping ruptured MCA aneurysm 4 years before
- Now, Left MCA aneurysm
- PMH: HTN, Chronic HA



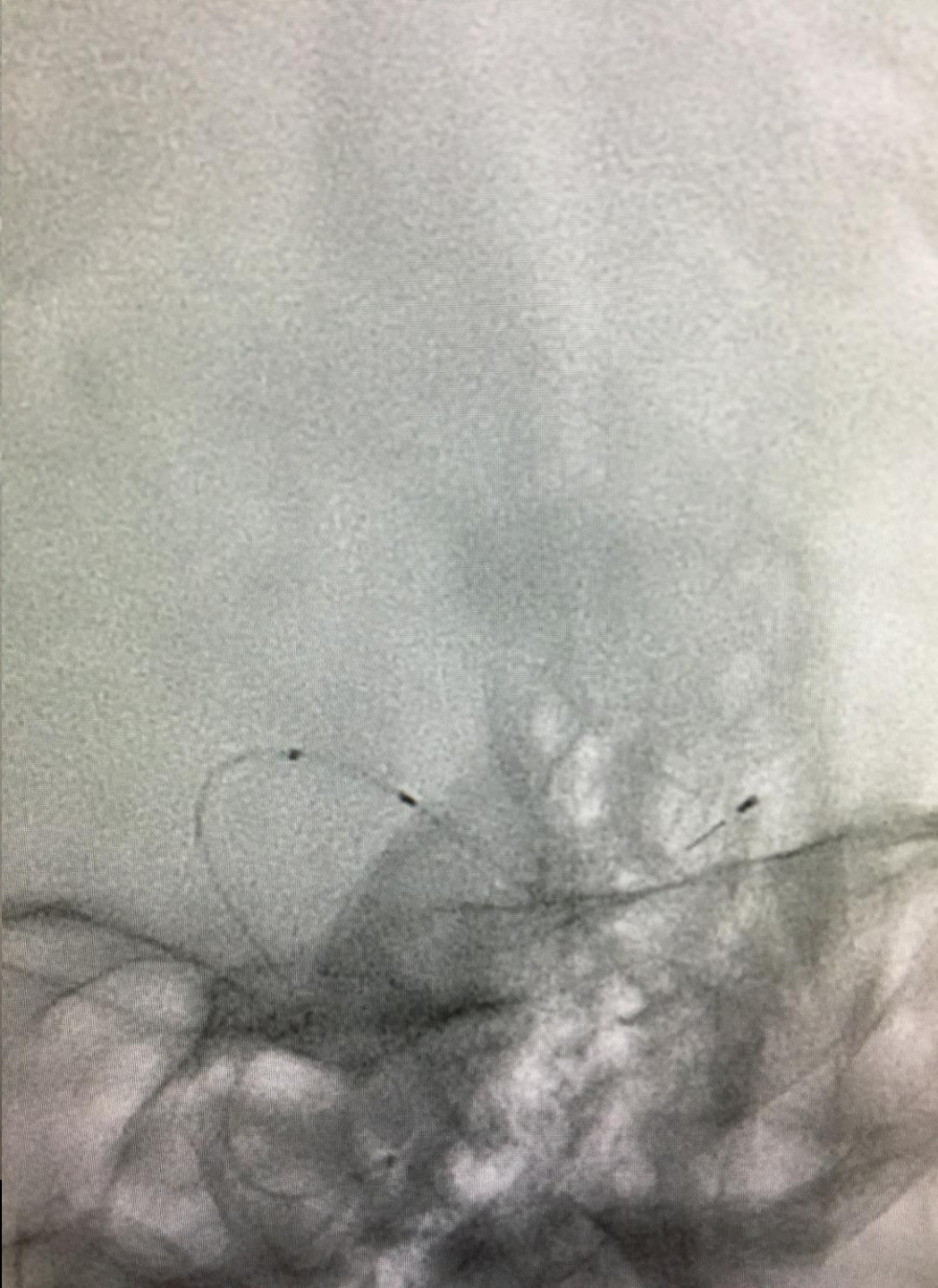
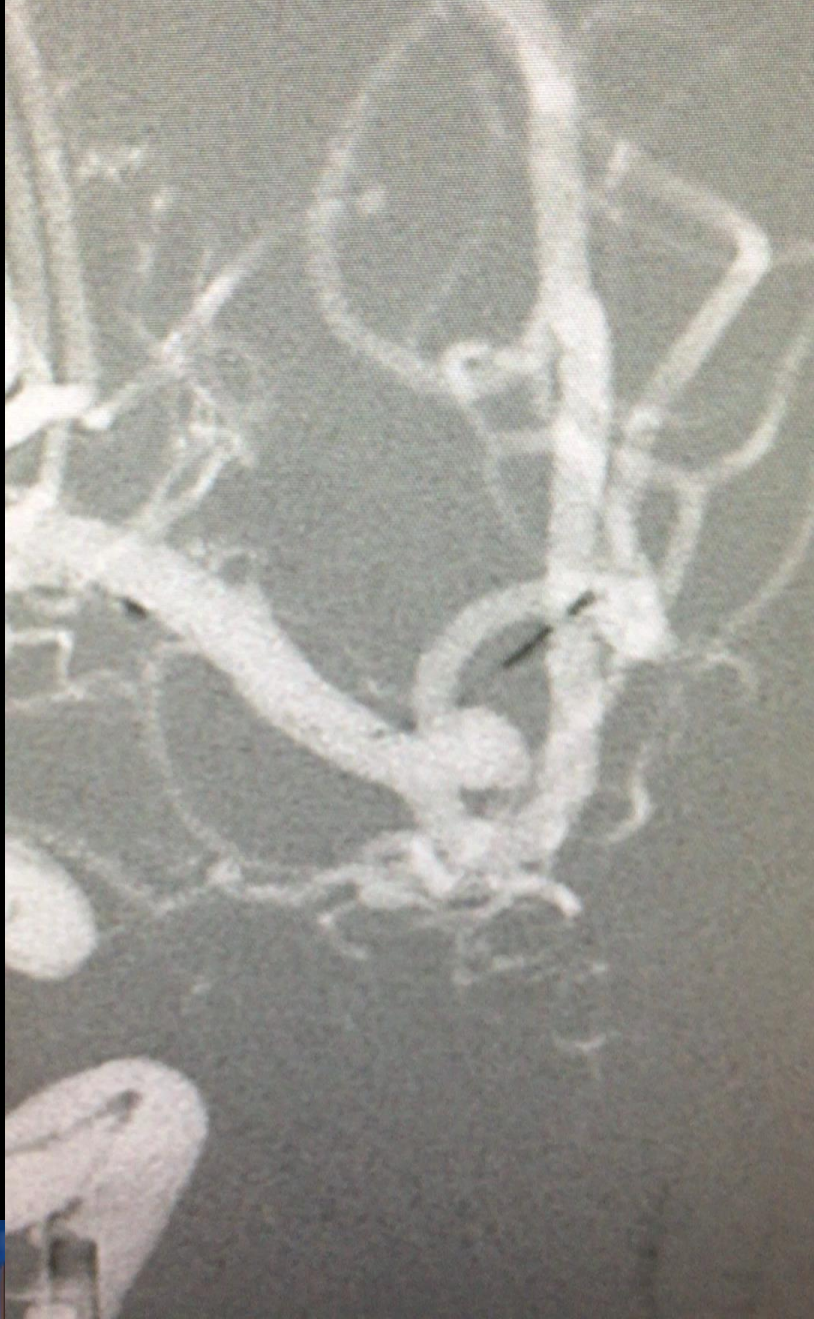




Quick Measurement 1 3.21 mm
Quick Measurement 2 7.83 mm
Quick Measurement 3 8.78 mm

? 50 pixels

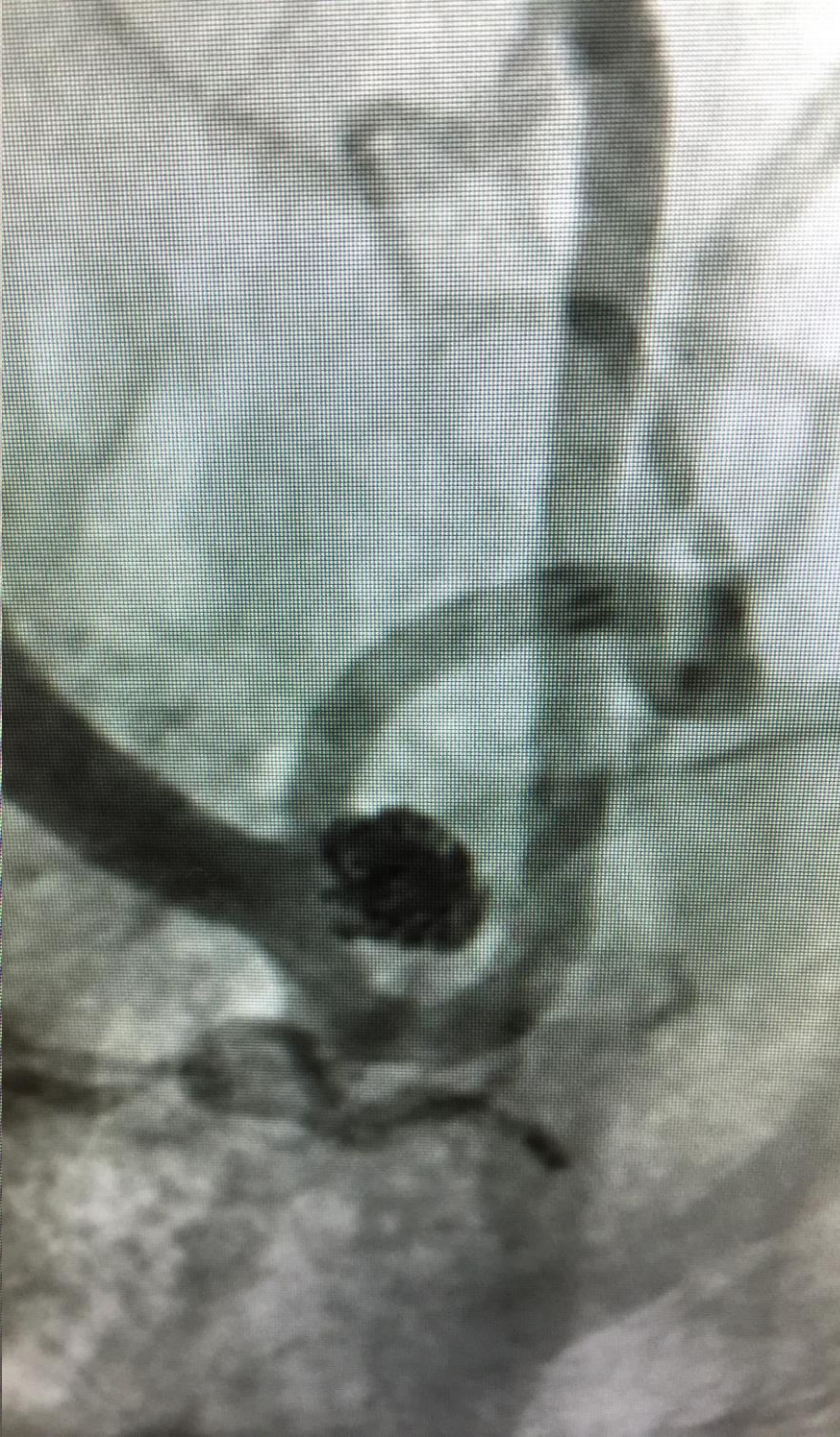












?

