

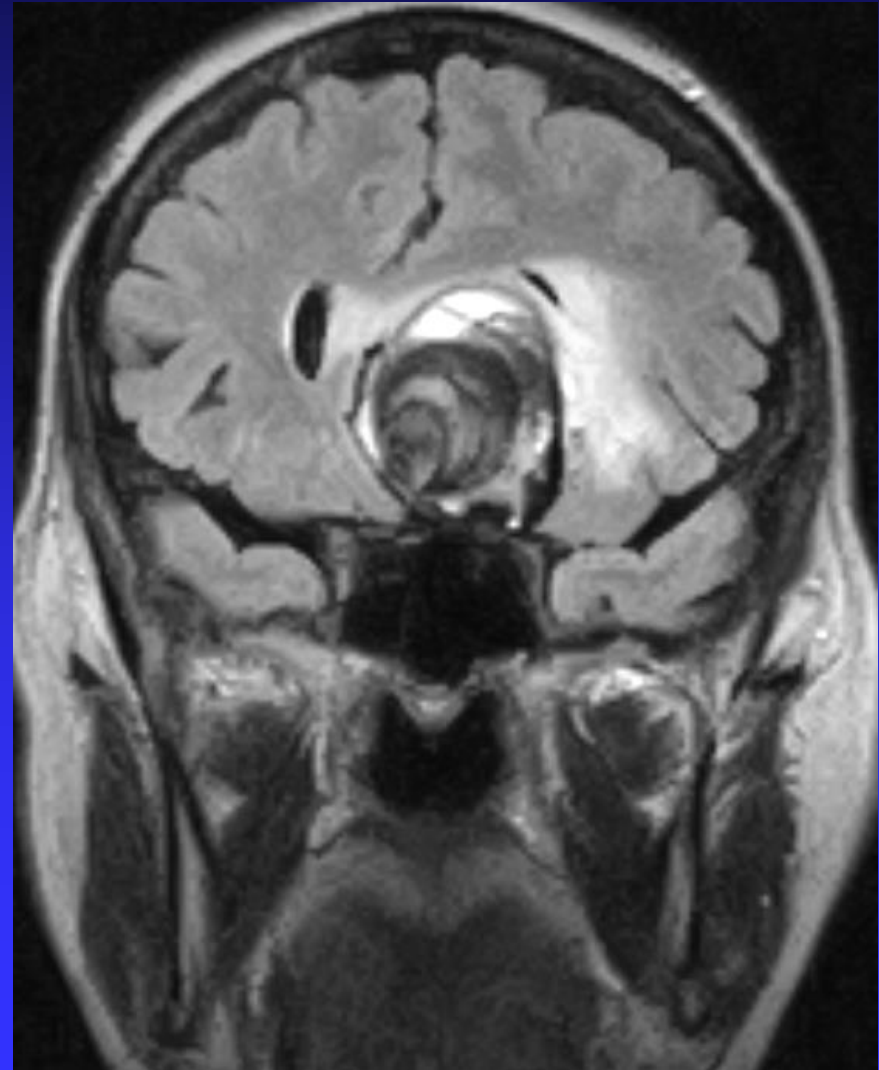
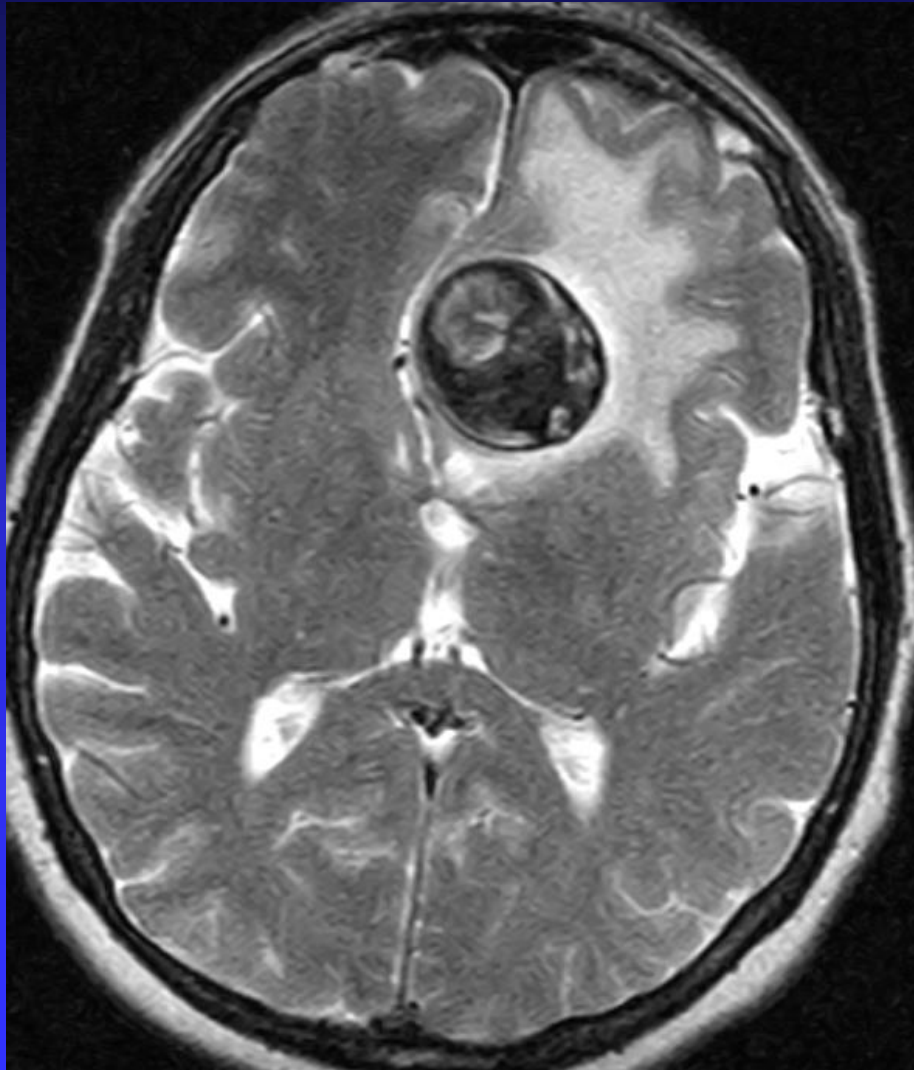
WLNC 2016 – Acomm aneurysm

Gyula Gál

Department of Radiology
University Hospital
Odense, Denmark



**62 yrs fem, giant, part, thromb.
ACom**



Unders.dato: 2013/11/25

Unders.dato: 2013/11/25

+60°
0°

Rot: -120°
Vinkel: 0°

de

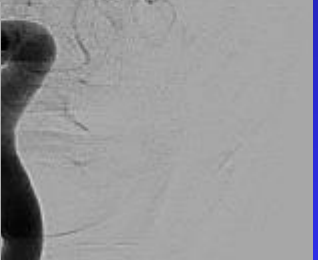
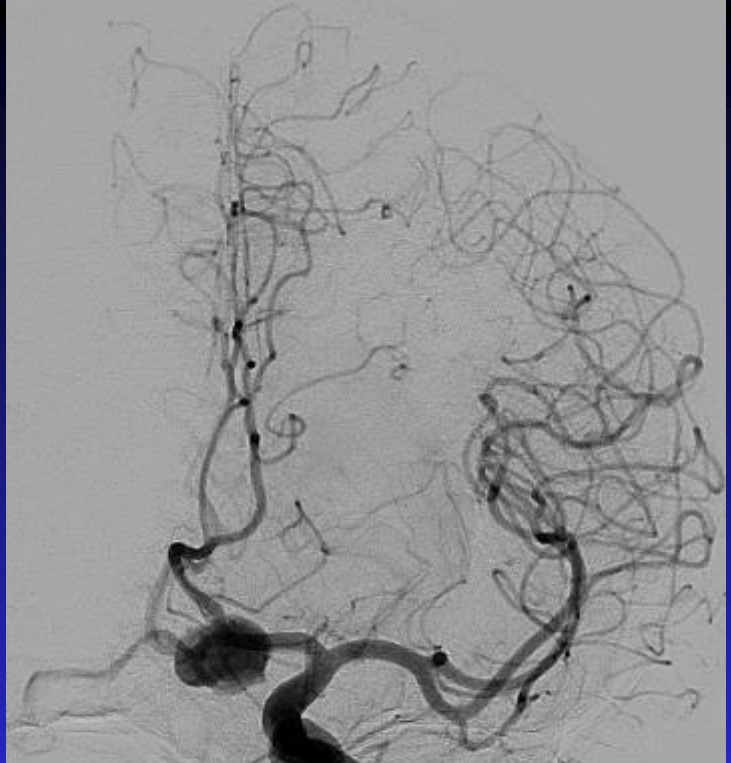
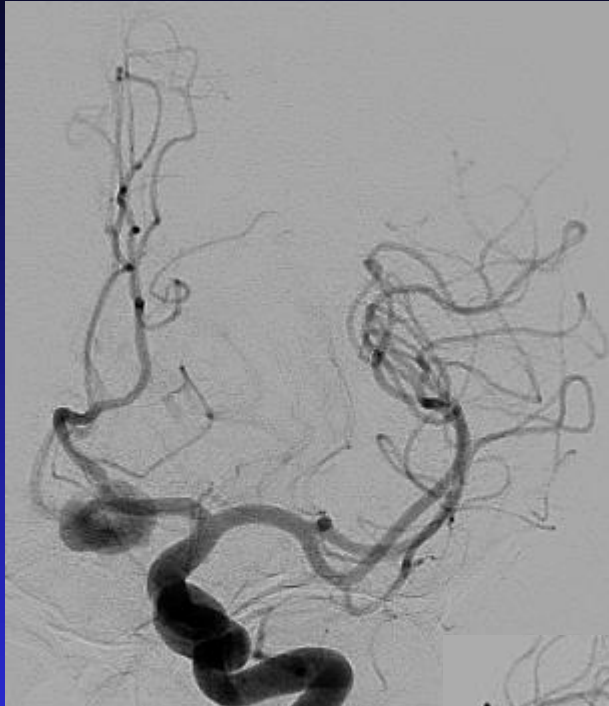
Hovedende



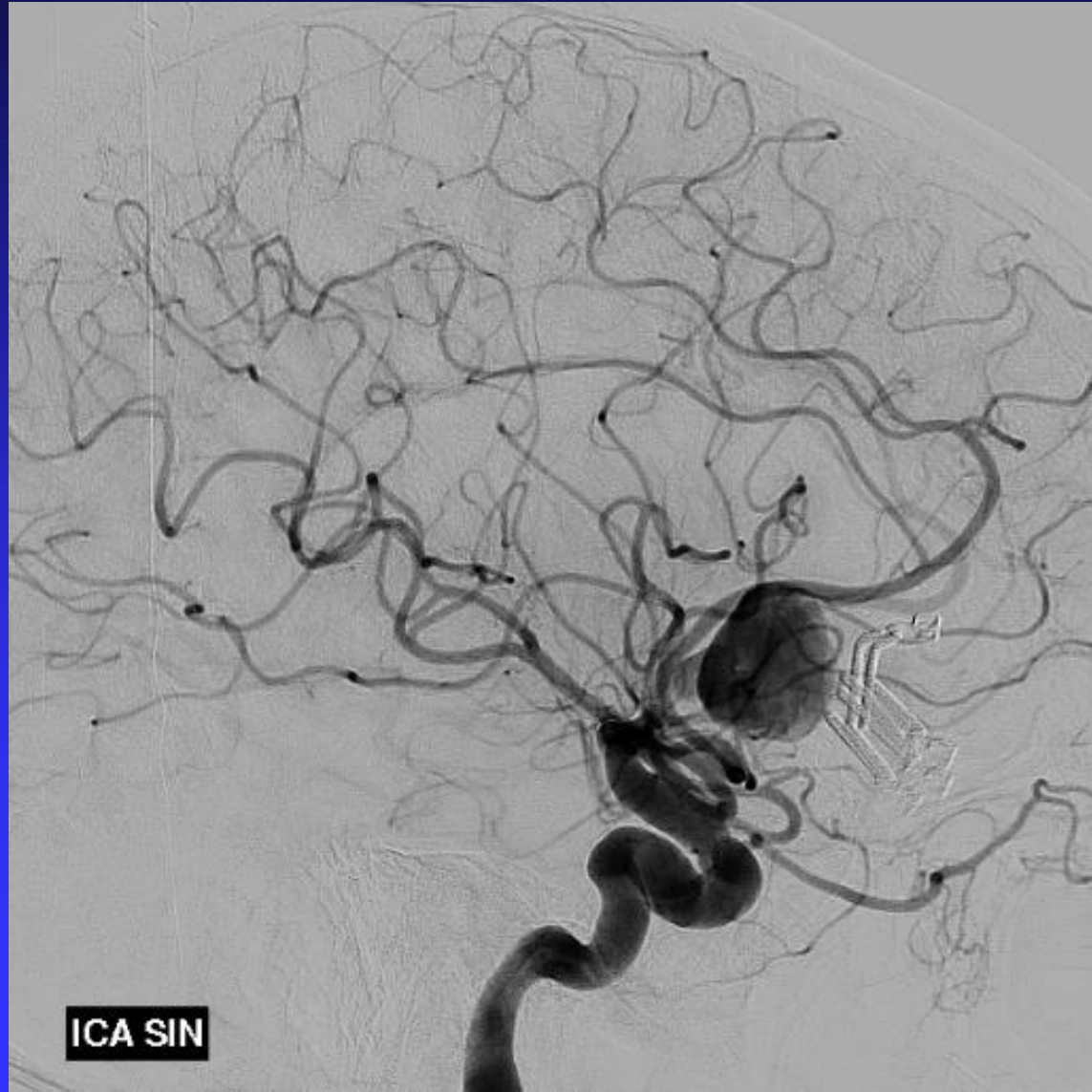
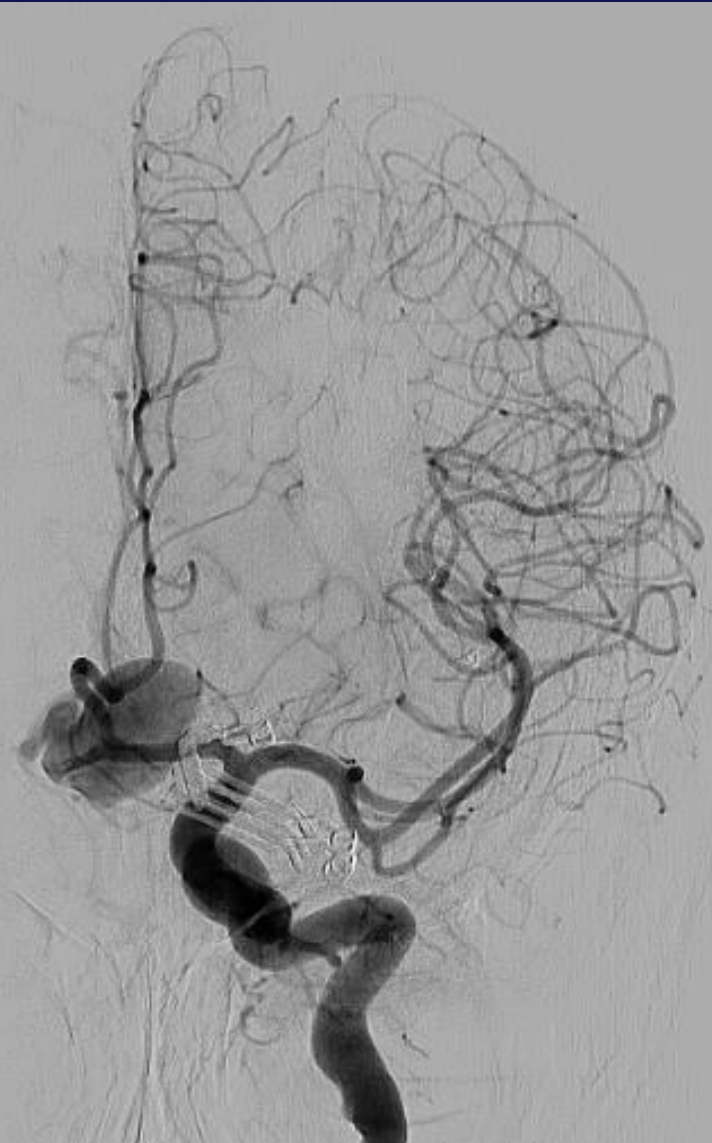
r: 5010
t: 2004

Kørselsnr: 5010
Volumet: 2004





Surg 26 Nov '13, f u 22 May '14



EVT 17 June

Unders.dato: 2014/06/17

Rot: -120°

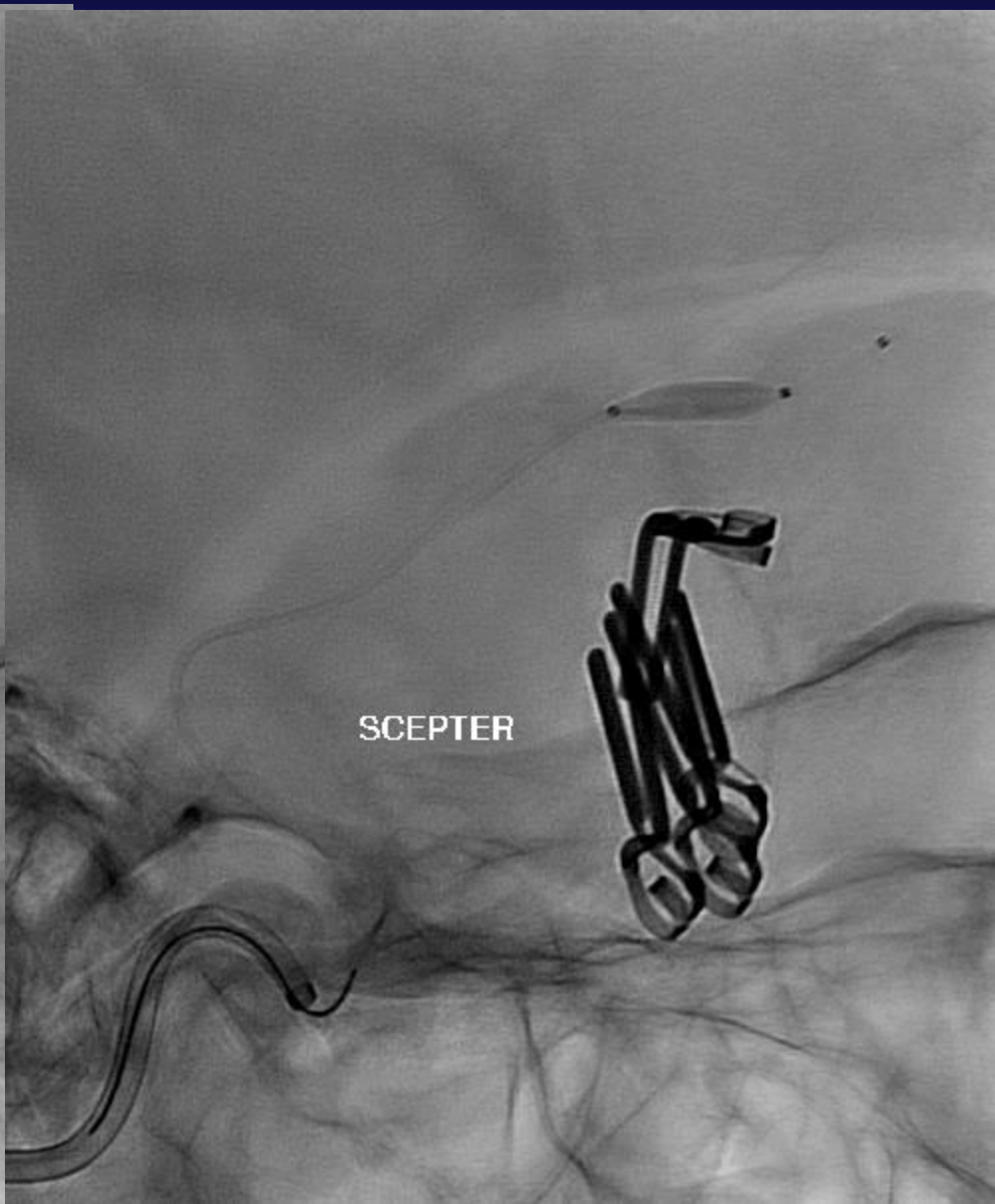
Vinkel: 0°

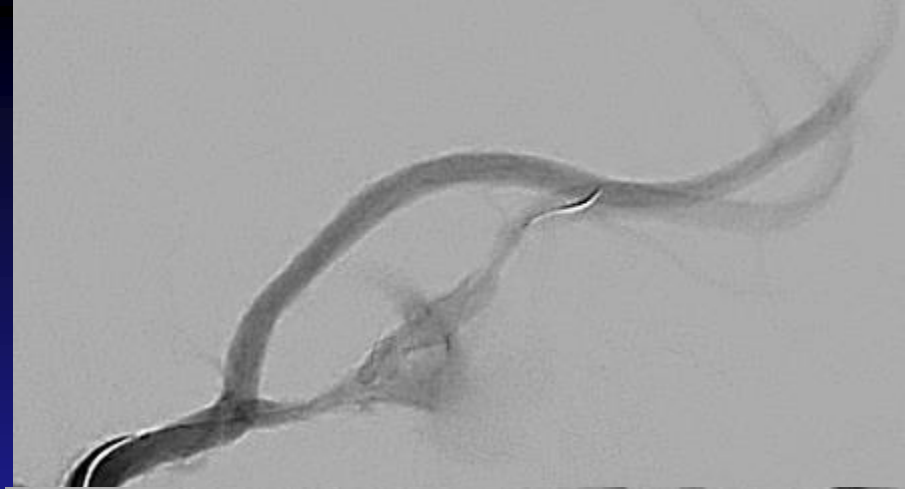
Hovedende



Kørselsnr: 5010
Volumentyp: 2DPA



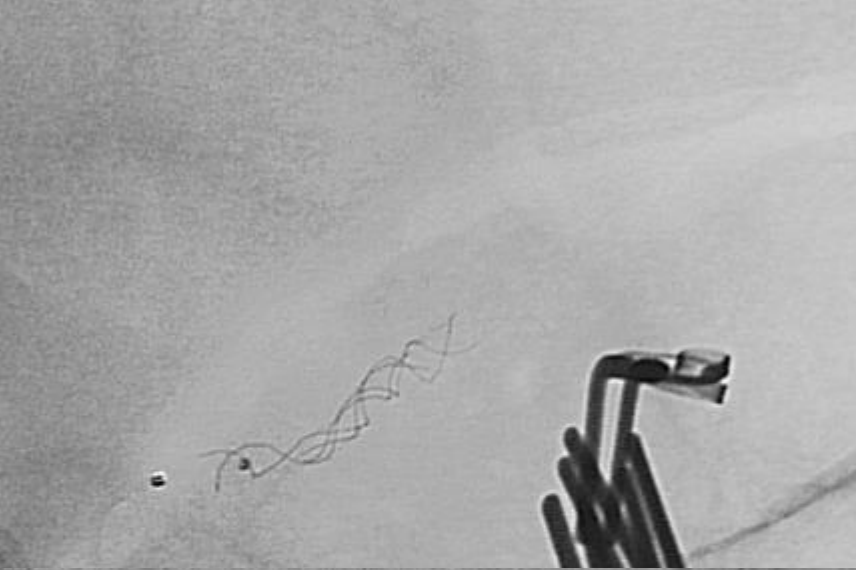




Leo+ Baby 2x25



Leo+ Baby 2x25

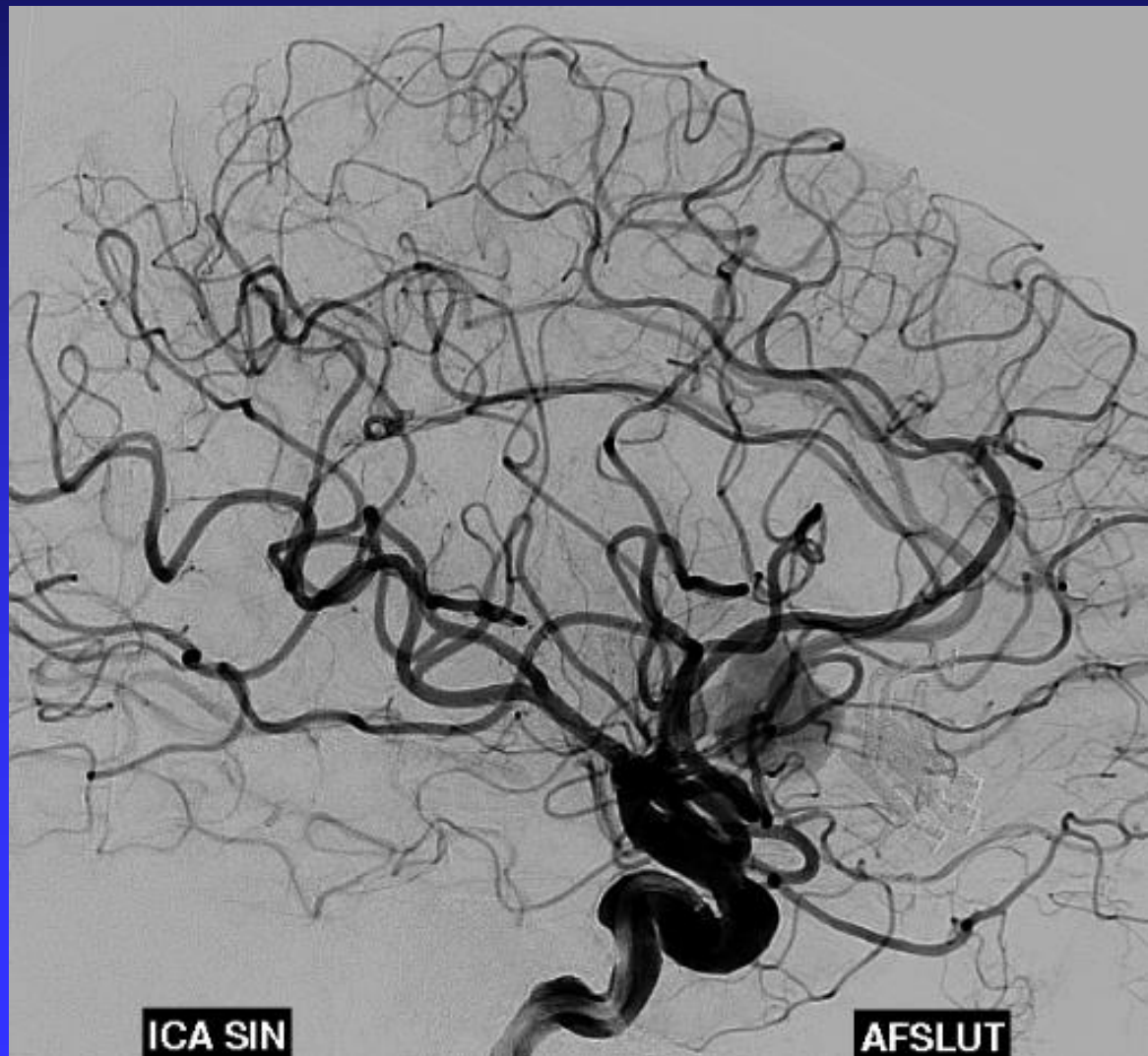


Leo+ Baby 2x25, 2x12

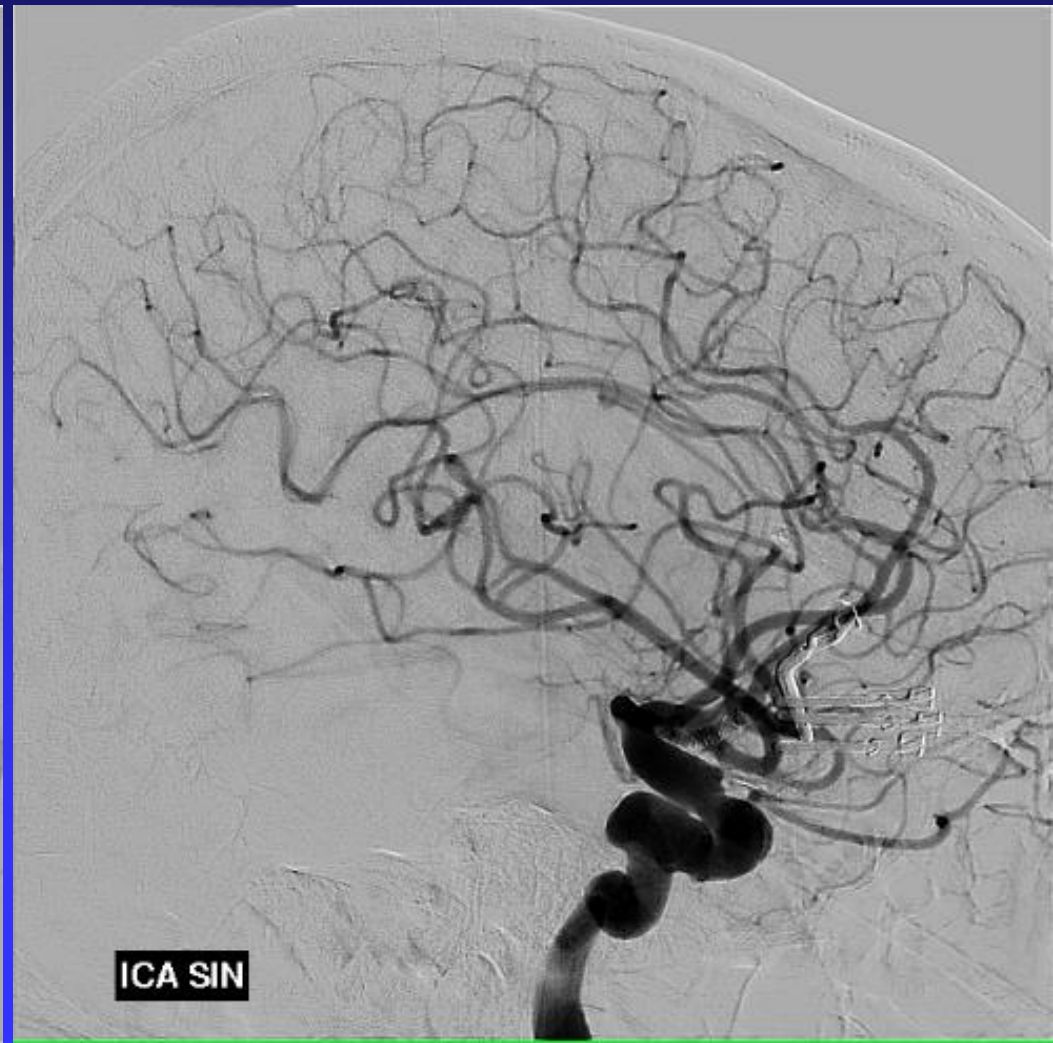


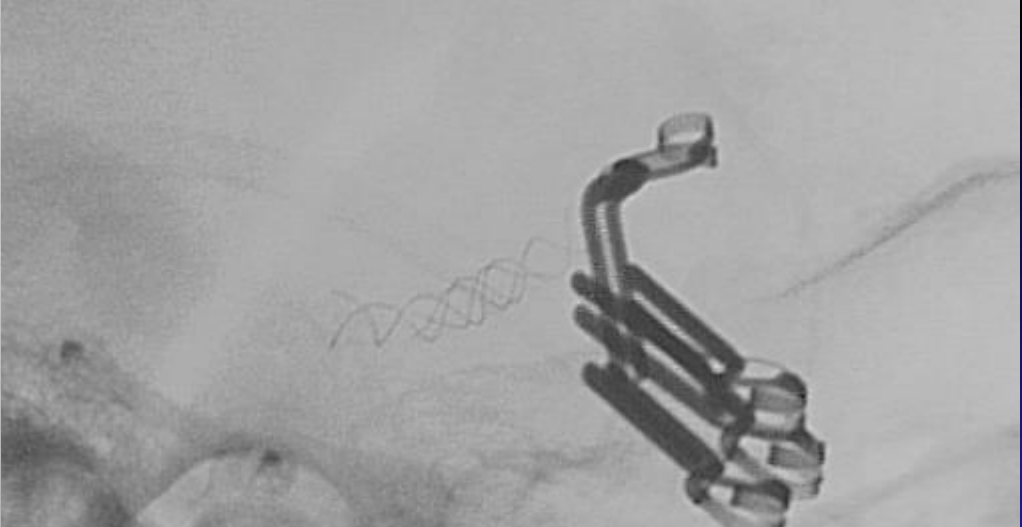
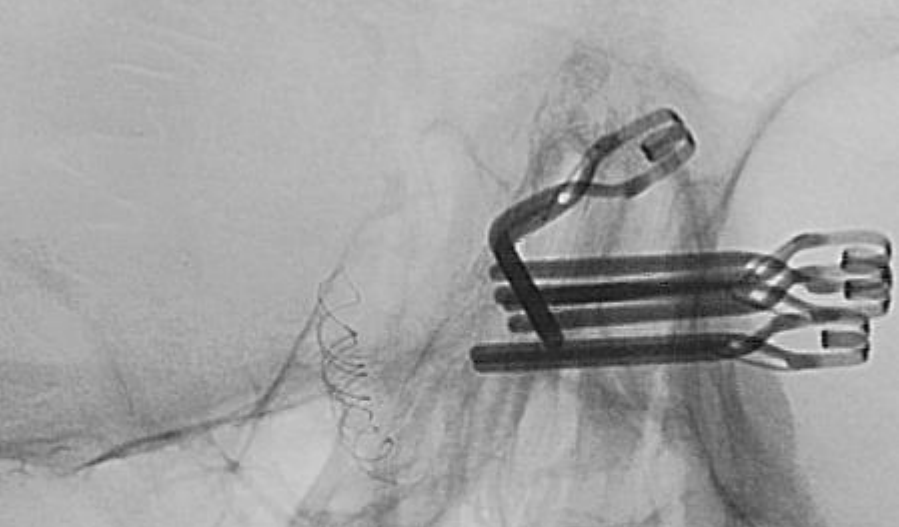
Leo+ Baby 2x25, 2x12

Final angiogram



18 m f up





ICA SIN



ICA S