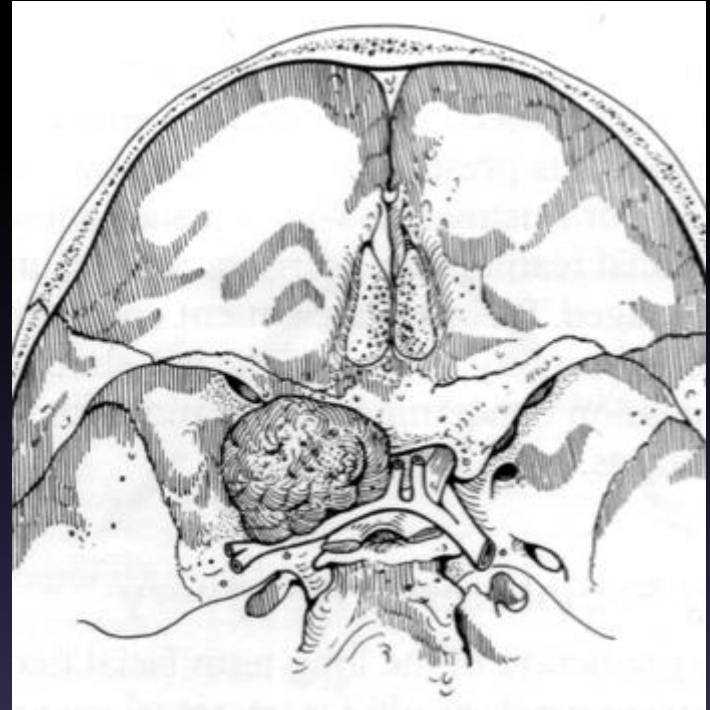
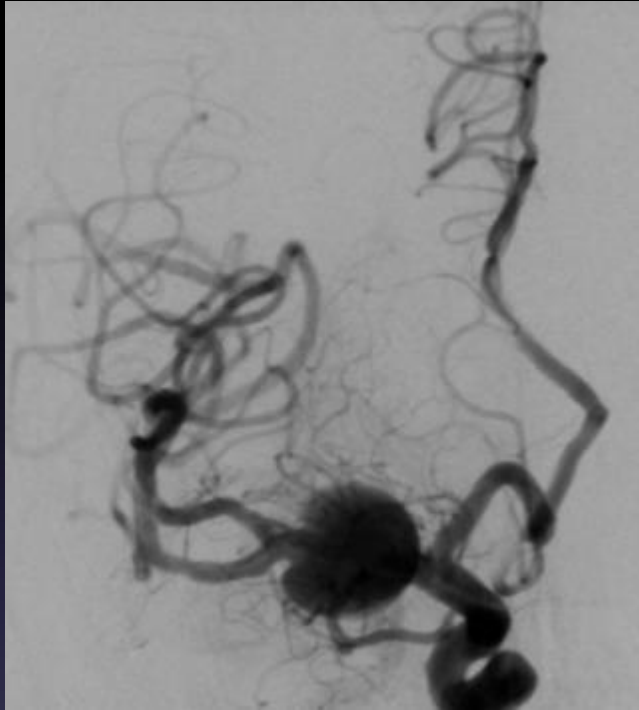


# Large dissecting MCA aneurysm

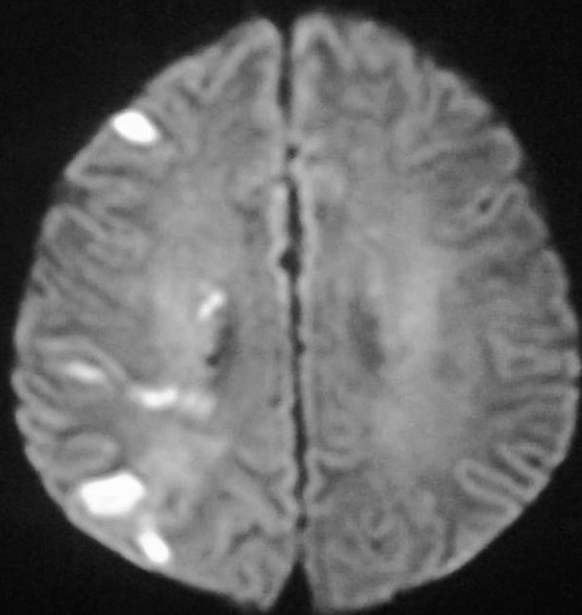
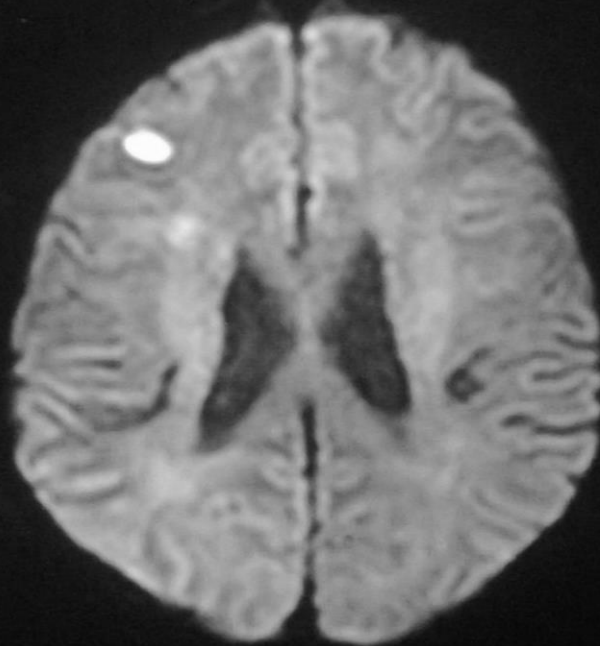
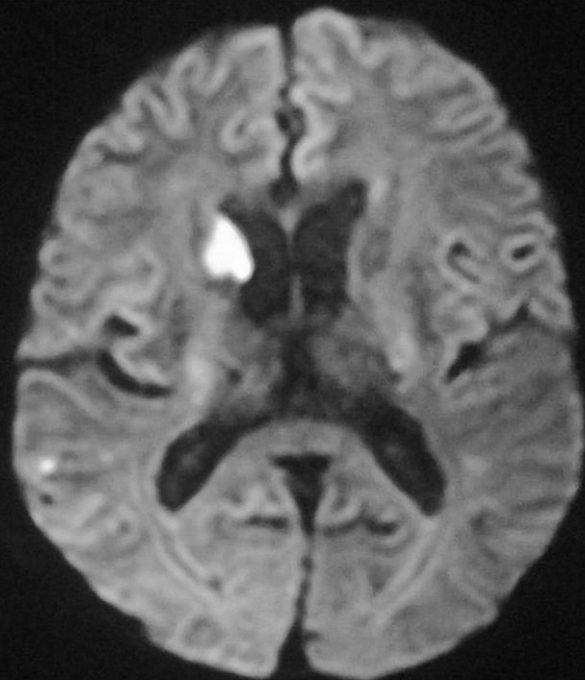
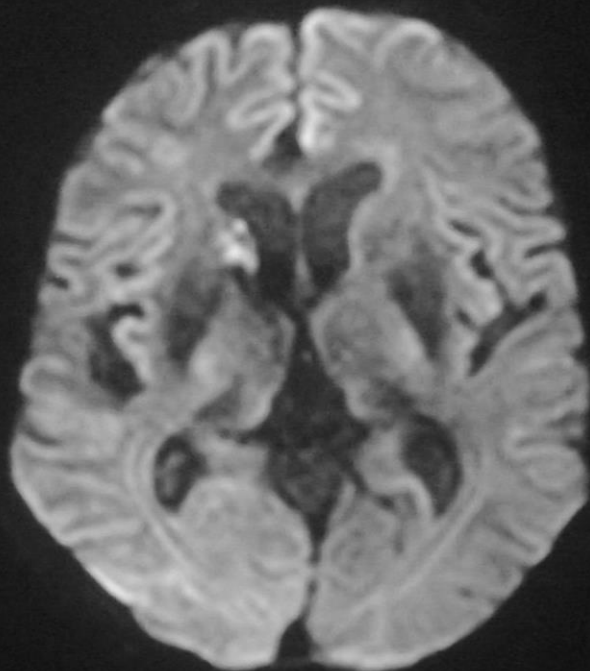


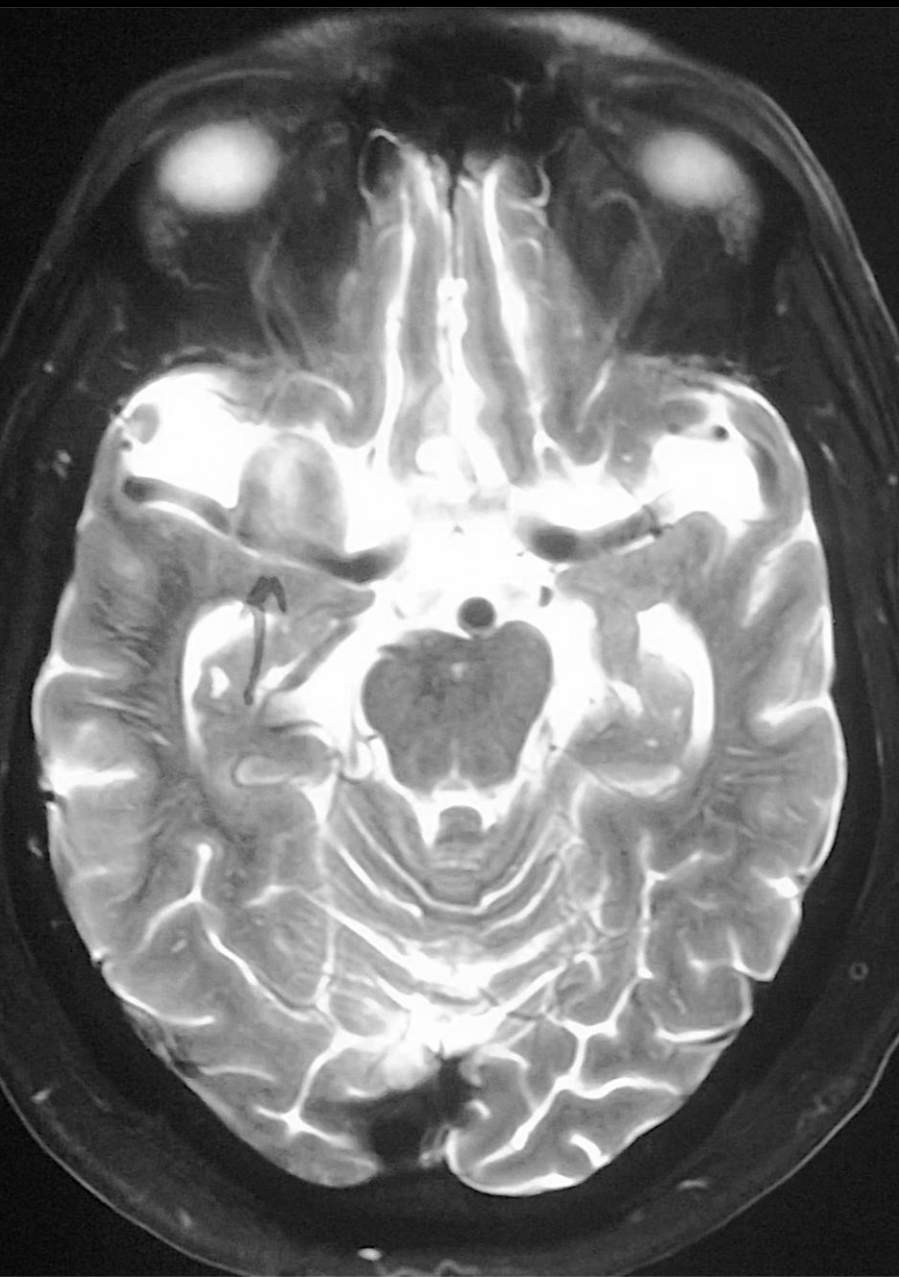
UDAY LIMAYE

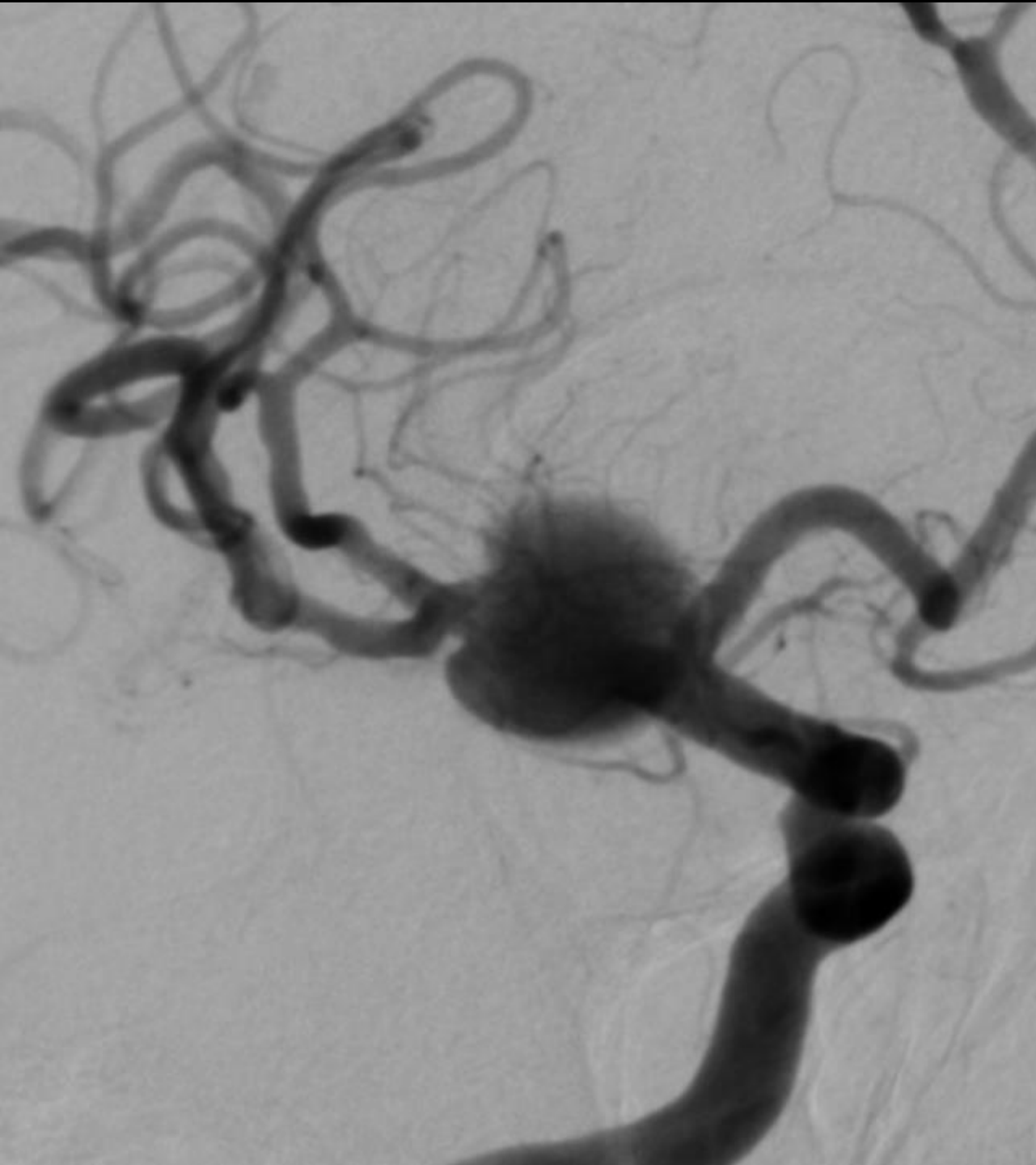
INTERVENTIONAL NEURORADIOLOGIST

MUMBAI, INDIA

59 Y/M with transient left  
hemiparesis







RT ICA LAT





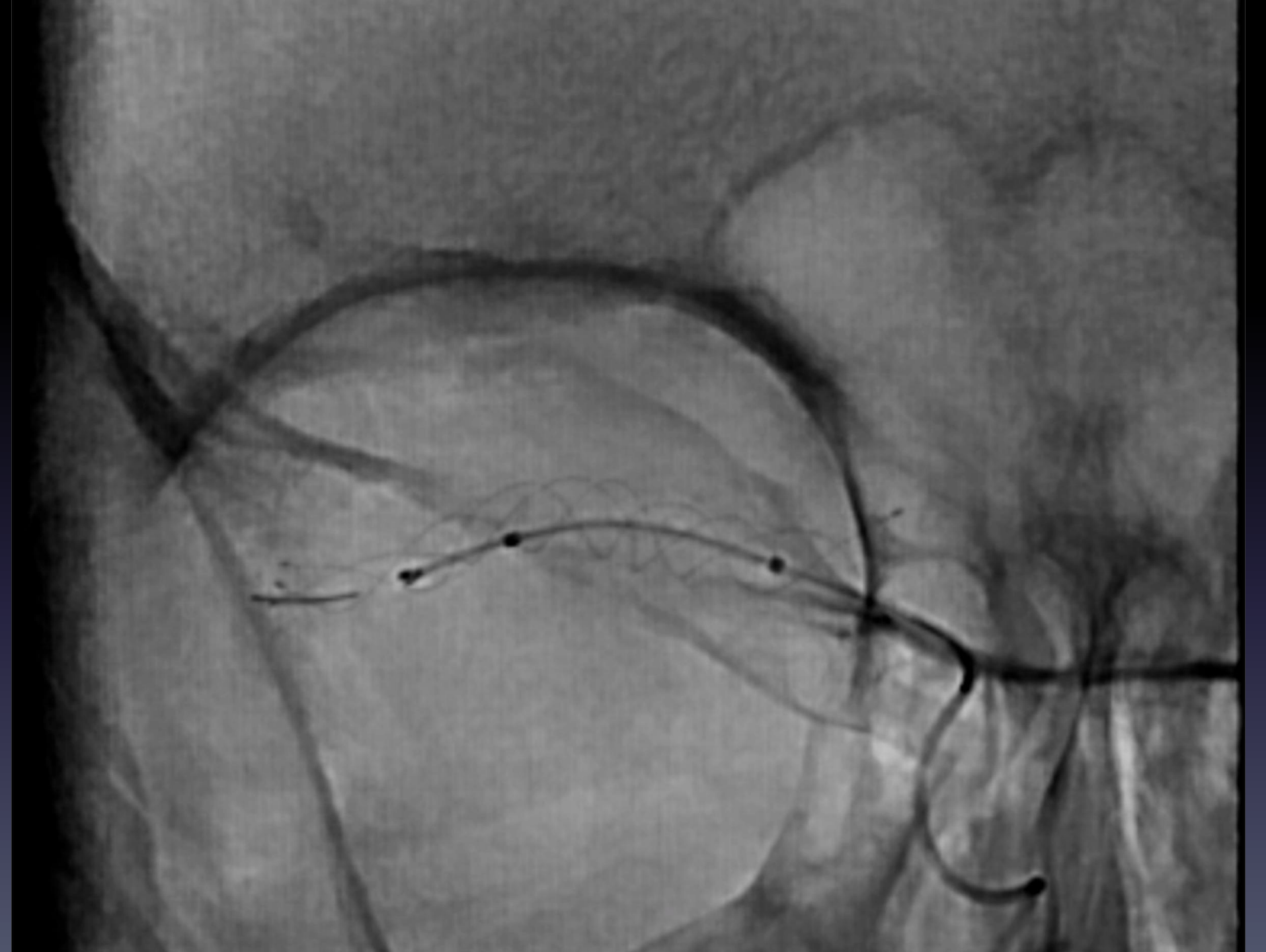


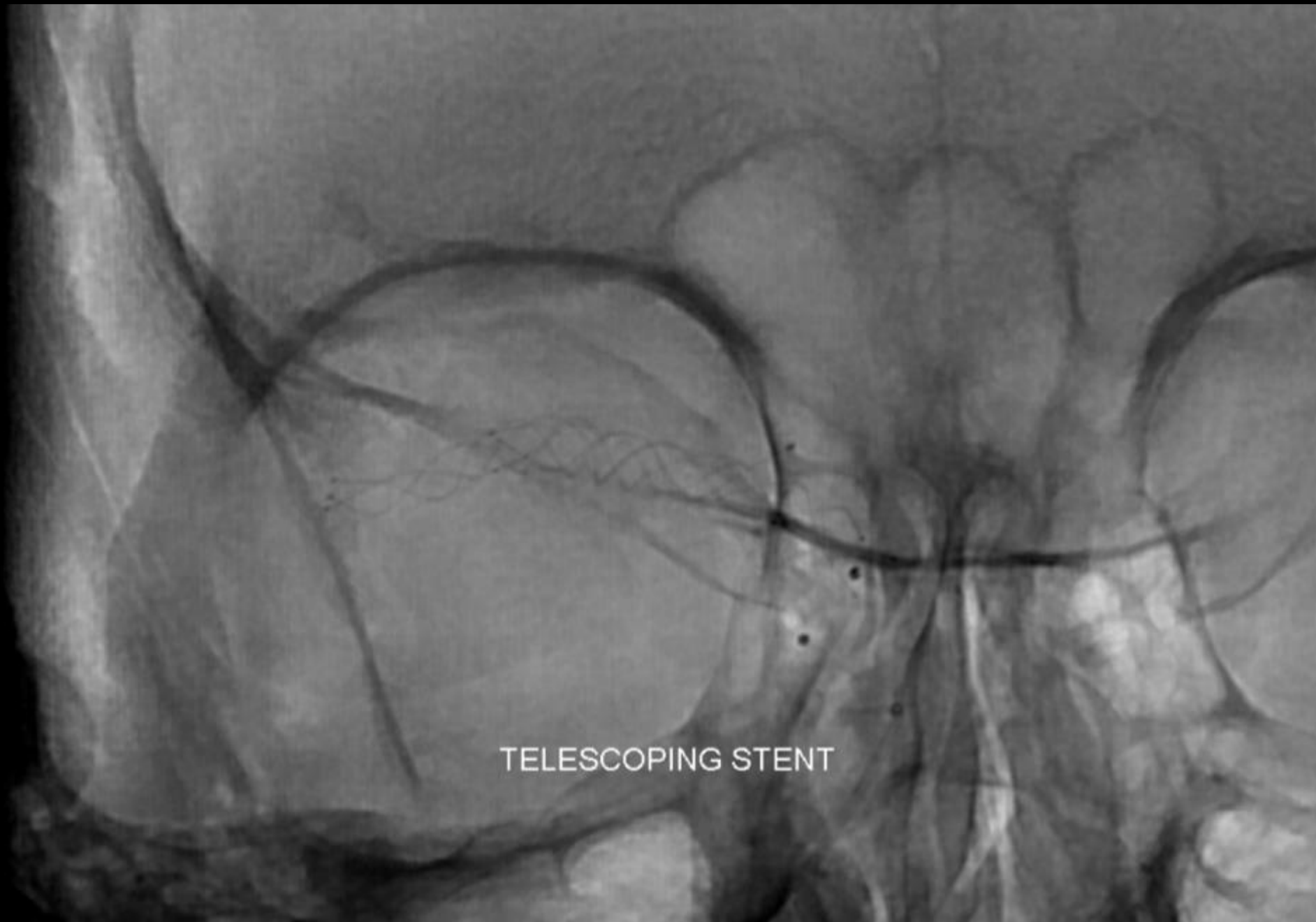
LVIS JR 3.5 X33MM

A black and white fluoroscopic image showing a medical procedure. A thin, dark line representing a catheter is visible, entering from the right side of the frame and curving upwards and to the left. The background is a complex, mottled grey pattern, likely representing the internal structures of a skull or brain during a surgical or interventional procedure. The catheter's tip is positioned near a circular, lighter-colored area in the upper left quadrant of the image.

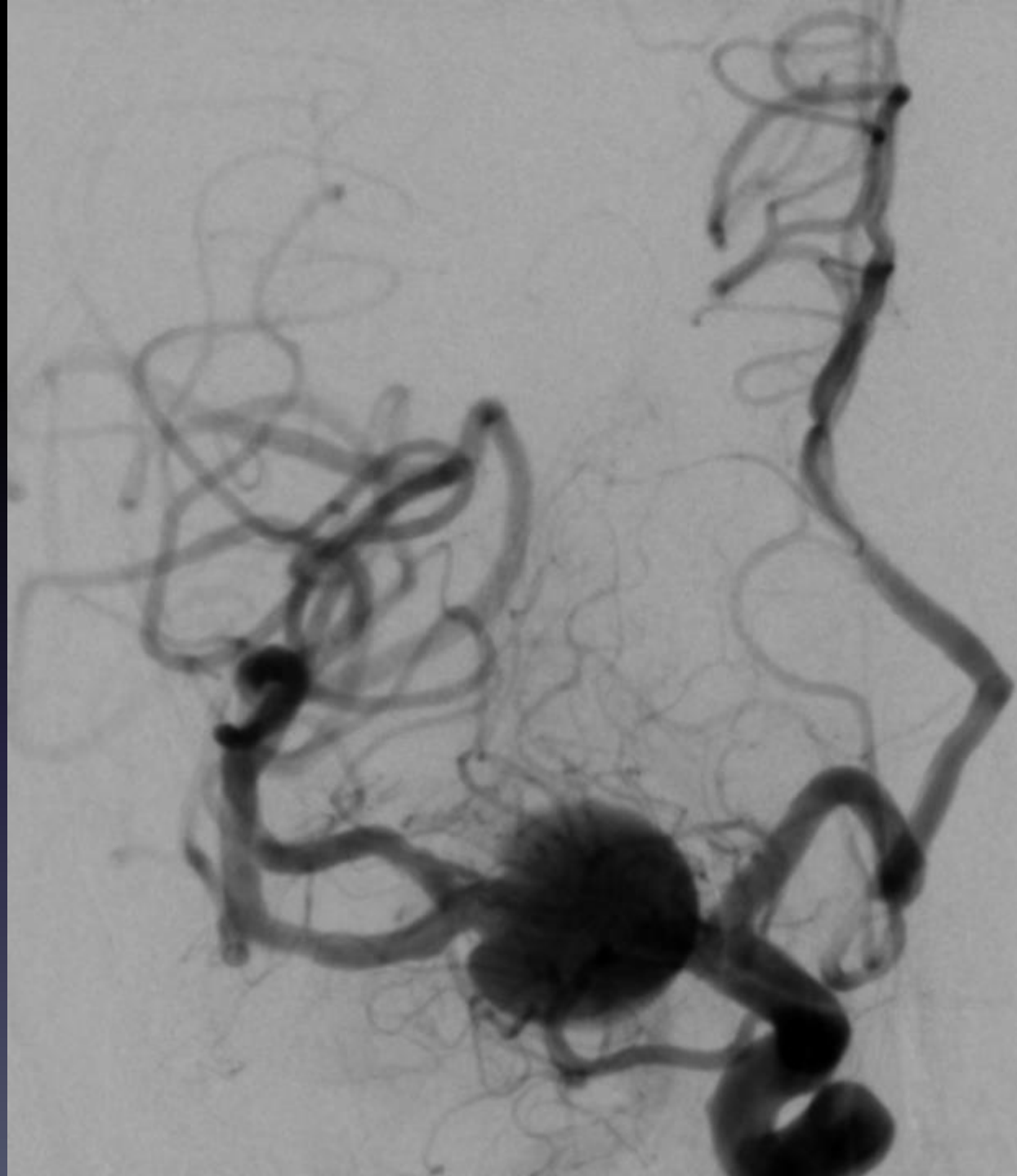
SCEPTER ACROSS THE TENT

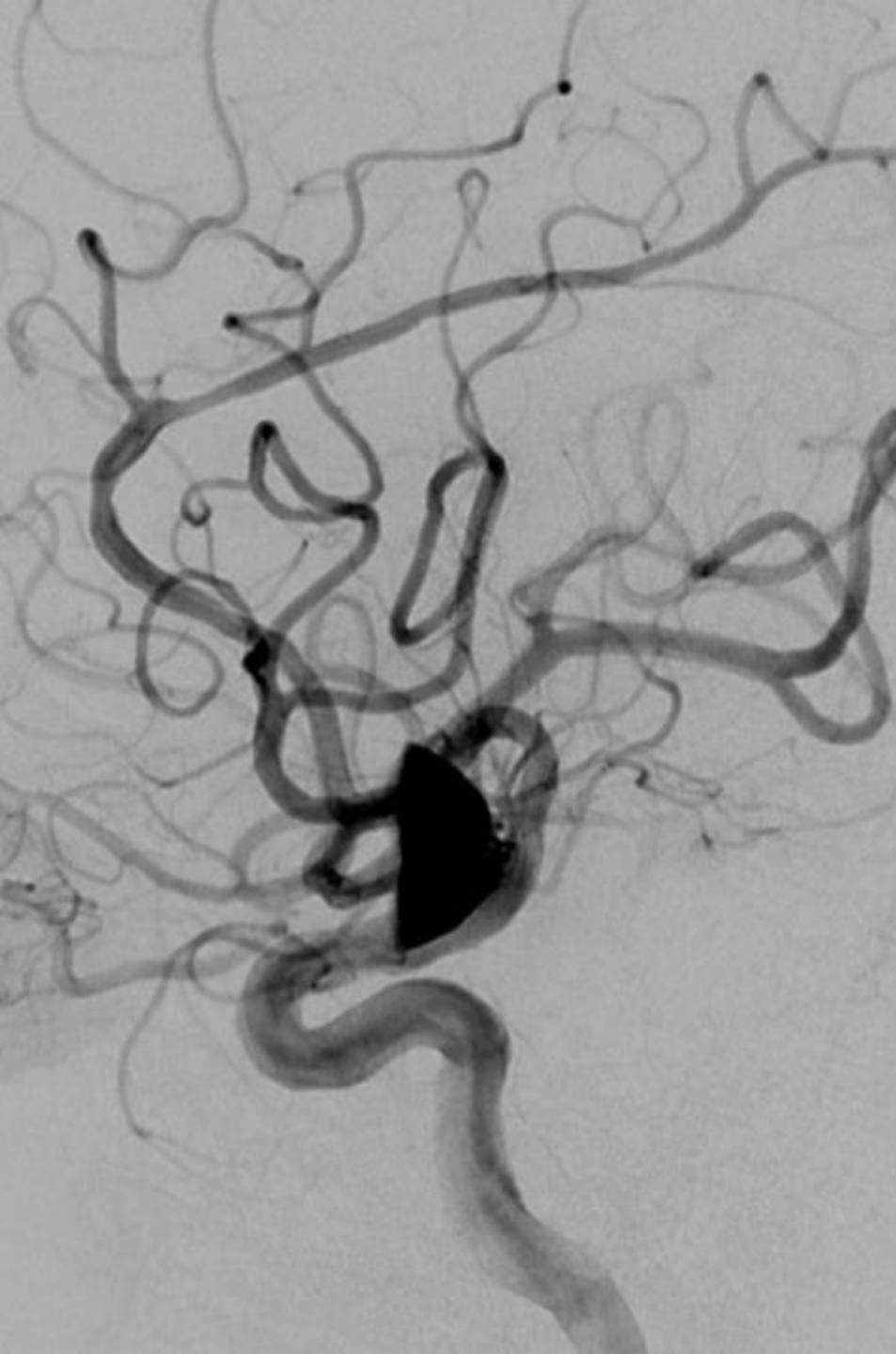






TELESCOPING STENT





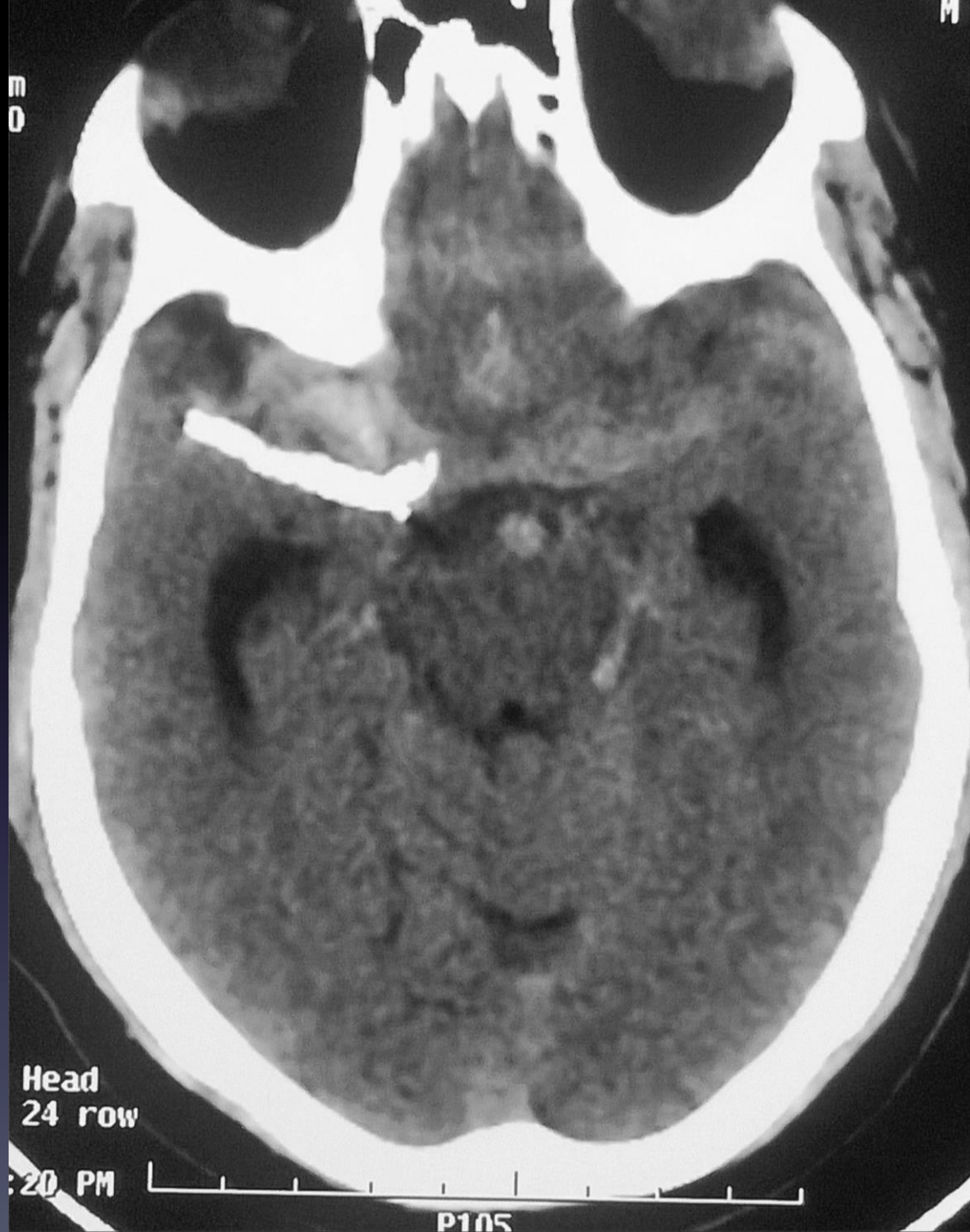






**10 DAYS LATER**

- Severe headache with giddiness

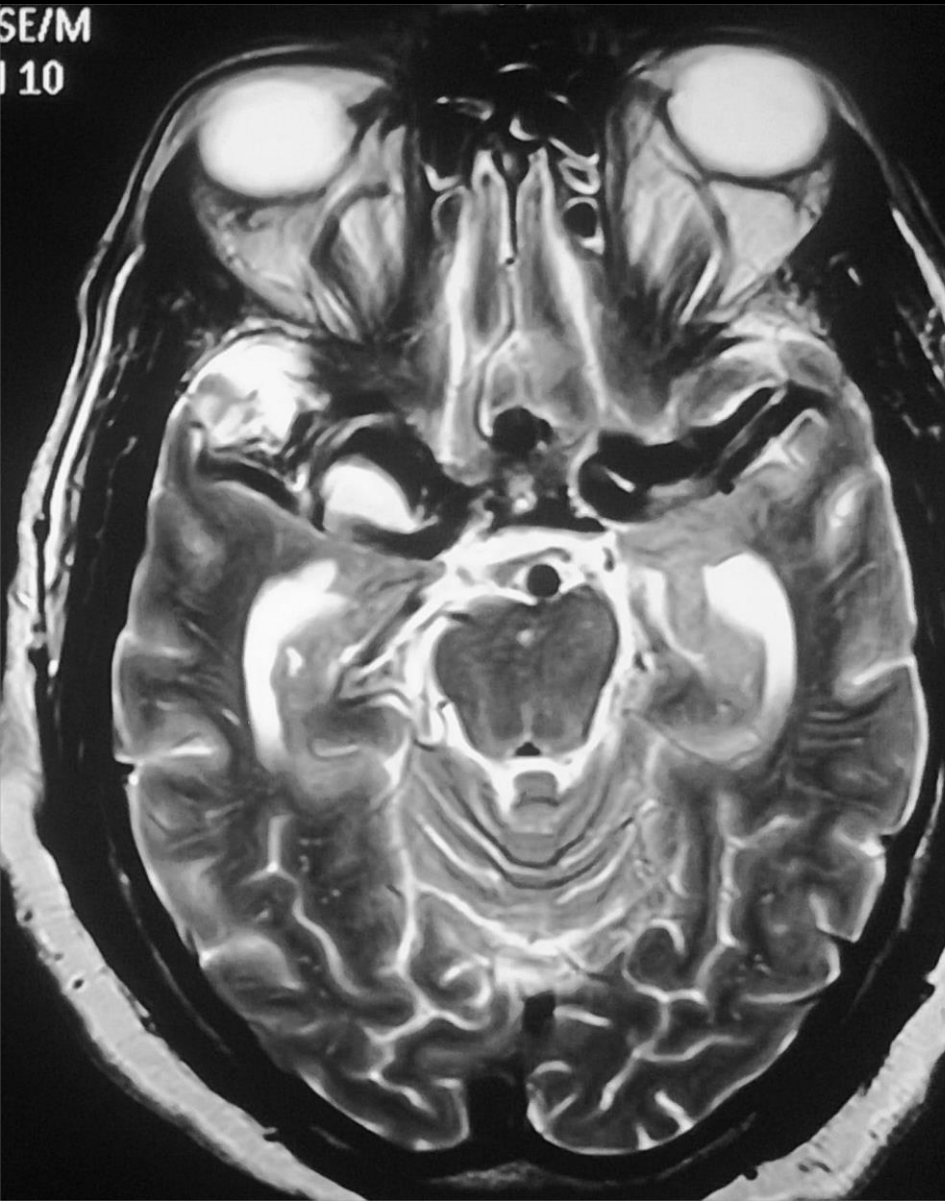


Head  
24 row

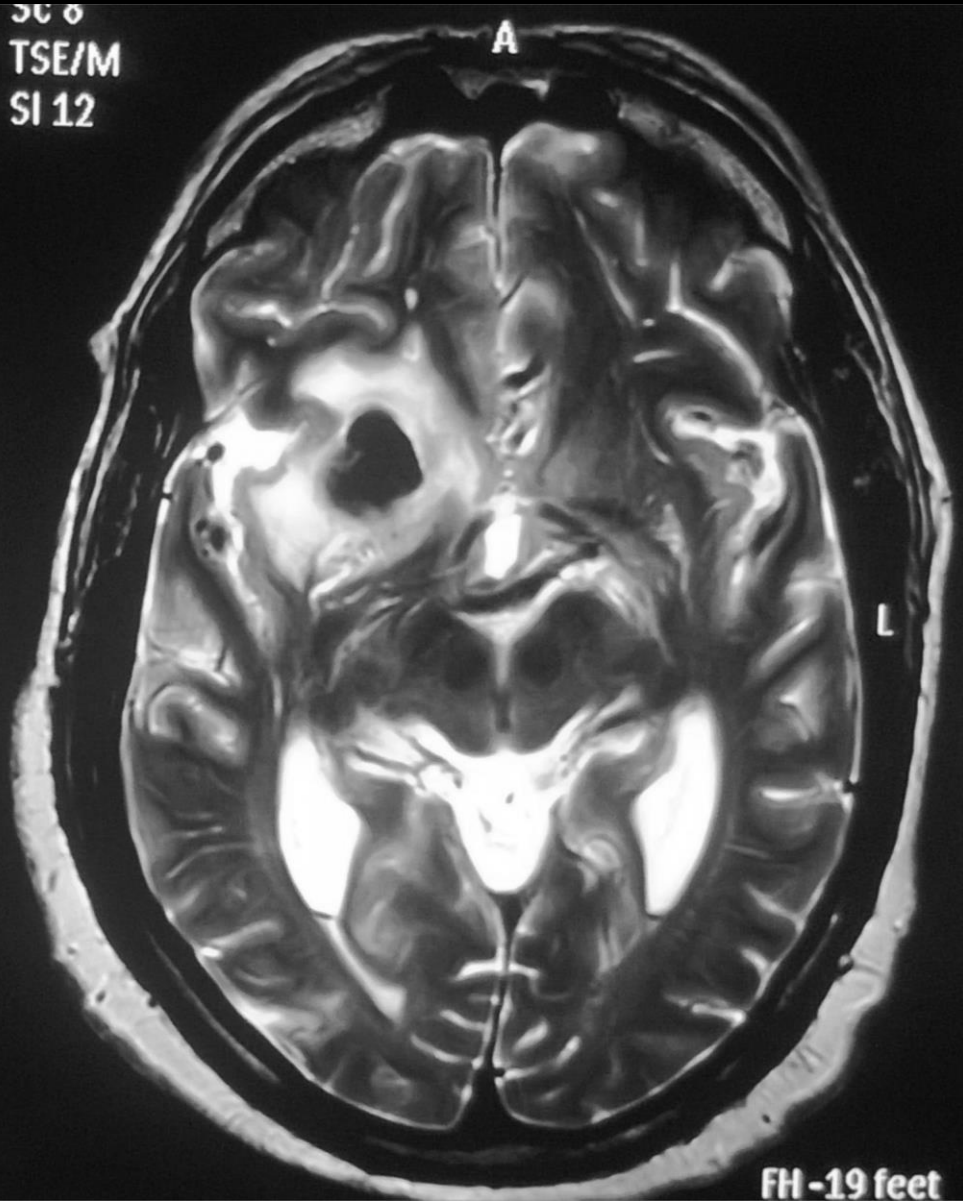
20 PM

P105

SE/M  
10



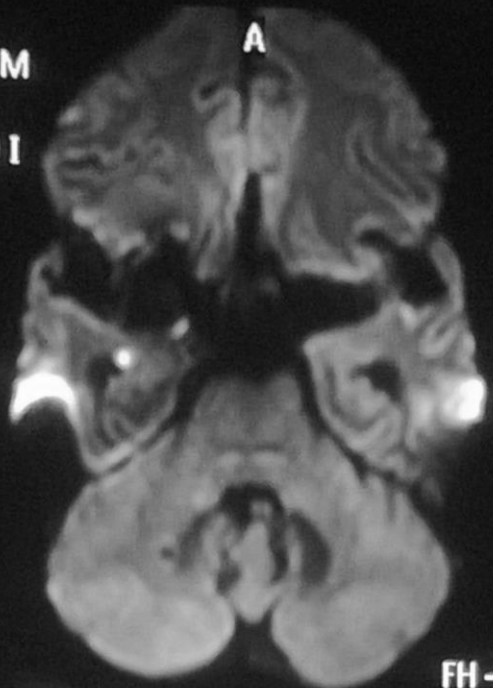
SC 8  
TSE/M  
SI 12





E/M

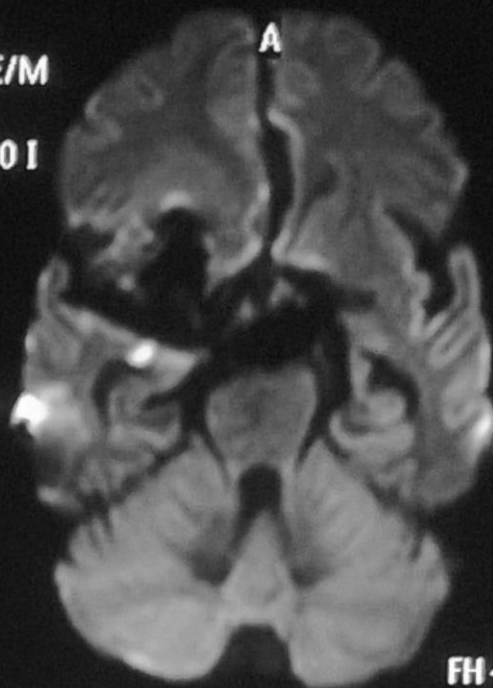
00 I



FH-42 feet

L

Sc 7  
DwiSE/M  
SI 9  
b 1000 I

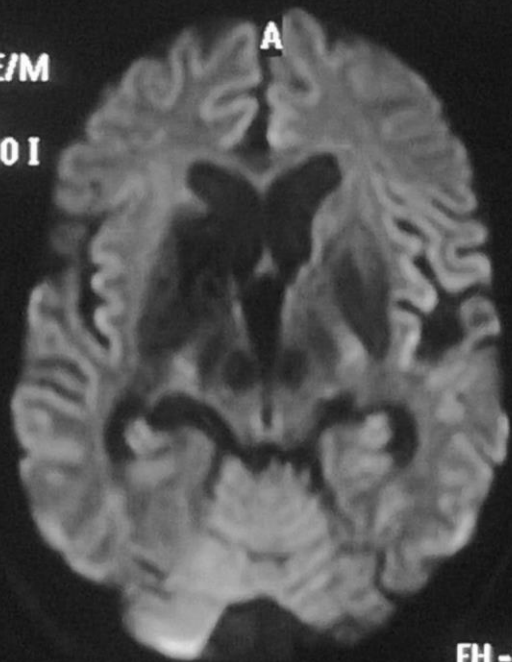


FH-36

A

E/M

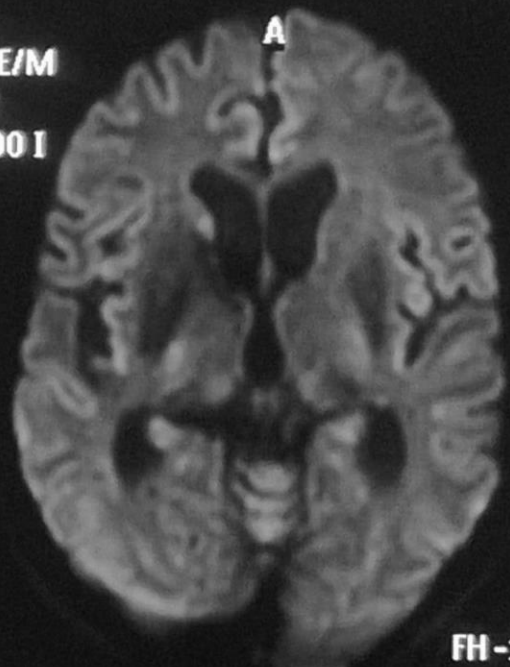
00 I



FH-24 feet

L

Sc 7  
DwiSE/M  
SI 12  
b 1000 I



FH-18 feet

A

L

**PLANNED FOR ANGIO SOS RX**

- Convulsion
- Loss of consciousness



- Pupils fixed dilated
- Doll's eye – absent